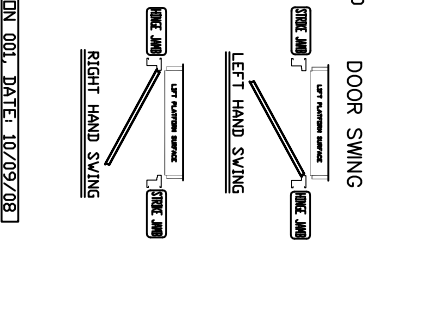
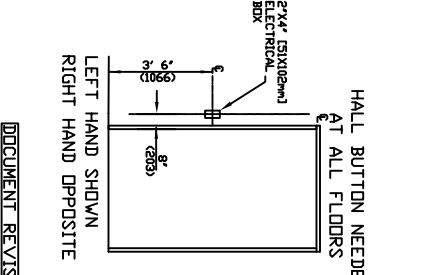


FINAL RAIL BRACKET	R81	BELOW THE MOTOR CONSULT YOUR REPRESENTATIVE FOR EXACT REPRESENTATIVE RAIL LOCATION
INTERMEDIATE RAIL BRACKET	R82	327 (813mm) INTERVALS AFTER 2nd BOTTOM BRACKET
BOTTOM RAIL BRACKET	R83	44" (1118mm) & 71" (1804mm) ABOVE PIT FLOOR



2 MOUNTING POSITIONS CENTER OR SIDE

4 WALL ANCHOR POINTS MIN. PER BRACKET. 2 PER SIDE OF RAIL BRACKET CENTER LINE. PULL OUT FORCE PER FASTENER 69 kg (152 LBS)

HALL BUTTON NEEDED AT ALL FLOORS

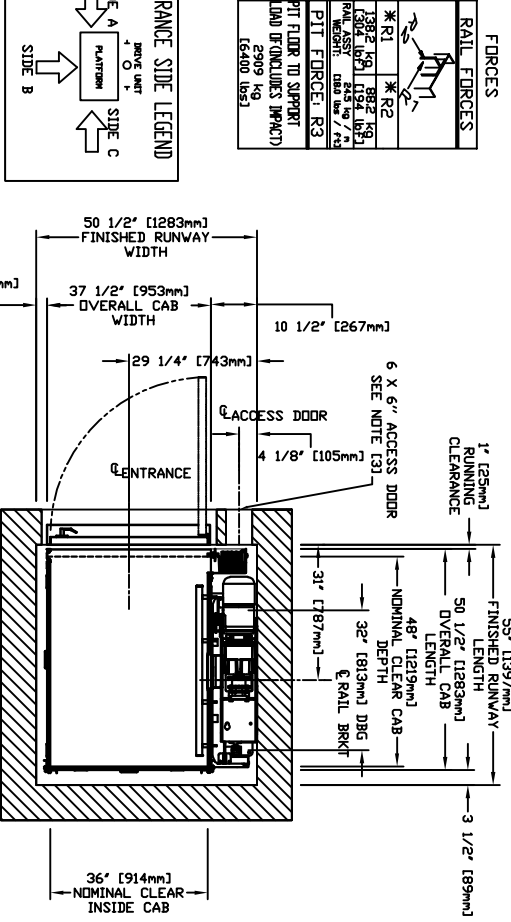
DOOR SWING

LEFT HAND SWING

RIGHT HAND SWING

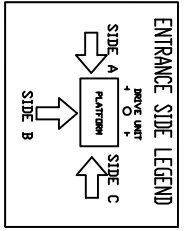
LEFT HAND SHOWN RIGHT HAND OPPOSITE

DOCUMENT REVISION 001, DATE: 10/09/08



FORCES

RAIL FORCES	
* R1	* R2
1392 kg (3082 LBS)	882 kg (1941 LBS)
1392 kg (3082 LBS)	882 kg (1941 LBS)
2909 kg (6440 LBS)	2909 kg (6440 LBS)
PIT FLOOR TO SUPPORT LOAD (EXCLUDES IMPACT)	
2909 kg (6440 LBS)	



CHARACTERISTICS

GENERAL

APPLIED CODE: CONCORD

MOTOR: 2.0 HP/1660 RPM V/Broke

GEAR MODEL: 42171 Ratio Gear Box

CAPACITY: 750, 1000 LBS

DRIVE ASSEMBLY MFR.: Pre-programmed VF Drive

NOMINAL SPEED: 40 FPM

TRAVEL: (MIN. 6') DUAL #60 ROLLER CHAIN

PIT DEPTH: (MIN. 6')

CAR DETAILS

CAB PANEL SELECTION: (SEE CHART)

CEILING SELECTION: (V/H/MATCH)

CAB FLOORING: (PLY/W, FINISH)

FINISHED FLOOR THICKNESS: (1/8 to 3/4")

CAB HEIGHT: (80, 96")

CAB OPERATION: (AUTO)

GATE TYPE: (V/P/D, C/F/D, CAB STILL, BLK SCZR)

GATE OPERATOR: (SS)

LOCKS/CALL STATIONS/TRAVEL/DOORS (BY OTHERS)

TRAVEL: LANDING 1 LANDING 2 LANDING 3 LANDING 4

ENTRANCE SIDE: SIDE A SIDE A HATCH SIDE A

LOOK TYPE: SMARTLOCK (BY OTHERS)

AUTO DOOR OP: EMI, PORTA

STANDARD OPTIONS PROVIDED:

BUTTON MARKING: NUMERIC (1 to 4)

HALL CALL KEYS: NO

HALL CALL FINISH: MATCH CAR STATION

HALL CALL SHAPE: RECTANGULAR

PREVARE PACKAGE: ND

WALL FASTENERS: LAG

DISCONNECT (2) ND

BUFFER SPRING: ND

TEMP RUN BUTTON: ND

EXTRA CABLE (REMOVED): 0

WALL FASTENERS: LAG

DRIVE UNIT

CONCORD

2.0 HP/1660 RPM V/Broke

42171 Ratio Gear Box

Pre-programmed VF Drive

DUAL #60 ROLLER CHAIN

ANSI B29.1

9020 LBS PER CHAIN

ELECTRICAL

POWER SUPPLY: 60 Hz/1 Phase/230 volt

POT LIGHT FINISH (4): (SS, BRZ, BRS)

TRIM COLOUR: (CLR, BRZ)

CAR STATION PLATE (V/P/D): (CLR, BRZ, BRS, SS)

HAND RAIL TYPE: (CLR, BRZ, BRS, SS)

TELEPHONE BOX: (CLR, BRZ, BRS, SS)

GATES REQUIRED: (AUTO, MAN)

MIN OVERHEAD: 96/114"

OH:

HATCH SIDE A

HOISTWAY, CONSTRUCTION SITE CLEARANCE

1- HOISTWAY CONSTRUCTION AND PIT DEPTH SHALL BE LIMITED TO SPACE WITHIN THE HOISTWAY. ALL CONSTRUCTION SHALL BE COMPLETED WITHIN 13" (330mm) OF PLUMB THROUGHOUT THE HOISTWAY. THE HOISTWAY FRAMING MUST BE WITHIN 13" (330mm) OF PLUMB AND SQUARE FROM TOP TO BOTTOM FOR PROPER OPERATION OF THE ELEVATOR THROUGHOUT THE HOISTWAY.

2- CLEARANCES FROM DOOR SILL TO HOISTWAY DOOR TO BE 76 mm (3") MAXIMUM AND ELEVATOR CAR DOOR TO HOISTWAY DOOR TO BE 127 mm (5") MAXIMUM TO COMPLY WITH LOCAL CODES AND/OR INSPECTOR AUTHORITY.

3- HOISTWAY MUST HAVE A MINIMUM 152 mm x 152 mm (6" x 6") LOCKABLE ACCESS HATCH PROVIDED BY SAVARIA CONCORD LOCATED AT THE TOP OF THE HOISTWAY. DRIVE ASSEMBLY BY THE MANUAL LOWERING HANDLE MANUAL LOWERING HANDLE WILL BE PROVIDED BY OVERDRIVER BRAKE AND LOWER CAR WITHOUT SUDDELY ENTRY TO THE SHAFTWAY.

4- THE PIT FLOOR SHALL BE CONSTRUCTED TO WITHSTAND AN IMPACT LOAD OF 2909 KG (6400 LBS). REF. CSA B44 SECTION 2.41 (CAN/ANSI A17.1 SECTION 106.2) TO THE OPERATION OF THE ELEVATOR.

5- HOISTWAY TO BE FREE OF ALL PIPES, WIRING AND OBSTRUCTIONS NOT RELATED TO THE OPERATION OF THE ELEVATOR.

6- CONSULT WITH LOCAL CODES.

7- CONSULT WITH LOCAL CODES.

8- DIMENSIONS GIVEN ARE MANUFACTURERS RECOMMENDED CLEARANCES. THEY REFLECT THE RUNNING AND ACCESS CLEARANCES. CONSULT YOUR LOCAL AUTHORITY TO ASSURE COMPLIANCE WITH PROVIDED AND LOCAL CODES.

DIMENSIONS WARNING:

CONTRACTOR/CUSTOMER TO VERIFY ALL DIMENSIONS AND REPORT ANY DISCREPANCIES TO OUR OFFICE IMMEDIATELY.

***STRUCTURAL**

7- A LOAD BEARING WALL IS REQUIRED TO SUSTAIN RAIL REACTIONS AS SPECIFIED IN KEY TO RAIL REACTIONS ON DRAWING. BUILDING CONTRACTOR TO CONTACT STRUCTURAL ENGINEER TO DETERMINE IF SUPPORTING WALL WILL SUSTAIN RAIL REACTIONS. FOR CONSULTING WITH LOCAL CODES.

8- RAIL BRACKET ENDS MUST BE PROVIDED BY OWNER/AGENT.

9- ALL FULL HEIGHT DOORS MUST BE ALIGNED WITH THE DOOR CENTERLINE SHOWN ON PLANS. MINIMUM CLEAR OPENING OF 813 mm (2'-8 1/2" VIDE).

10- DOOR HANDLE AND LATCH SD LATCH SET REQUIRED FOR ALL FULL SIZE DOORS.

11- SEE INSTALLATION MANUAL FOR DETAILS ON THE INTERLOCKS. INTERLOCKS ARE REQUIRED FOR ALL FULL SIZE DOORS.

***ELECTRICAL**

12- THE ELEVATOR CONTROLLER IS 640 mm (24 3/4") WIDE X 584 mm (23 1/8") HIGH X 170 mm (6 7/8") DEEP. THE CONTROLLER IS PROVIDED BY SAVARIA CONCORD AND IS EITHER A. ATTACHED TO THE RAIL CHAIN INSIDE THE HOISTWAY BETWEEN THE RAILS WITH A 1/2" (13mm) CLEARANCE TO THE RAIL CHAIN OR B. IN A REMOTE LOCATION EXTERNAL TO HOISTWAY. THAT MEETS PROPER STRUCTURAL WALL TO SUPPORT THE CONTROLLER IN ALL 4 CORNERS HALFS POSITION ARE = 597 mm (23 5/8") WIDE BY 546 mm (21 5/8") HIGH.

13- ARRANGE FOR A POWER SUPPLY WITHIN SIGHT OF THE ELEVATOR.

14- THE ELECTRICAL CIRCUIT SHALL ORIGINATE FROM A LOCKABLE 2 POLE FUSED DISCONNECT 20 AMP RC 5 RATED FUSED LOCATED NEAR THE RESIDENCES INCLUDING ELECTRICAL PANEL. THE ELECTRICAL CIRCUIT PROVIDED FOR THE CONTROLLER SHALL BE 208/240 VOLT, SINGLE PHASE, DEDICATED CIRCUIT WITH NEUTRAL AND GROUND. RISING MUST BE PROVIDED FOR THE CONTROLLER. THE CIRCUIT SHALL BE 208/240 VOLT, 15 AMP, 15 VOLT FUSED DISCONNECT WITH 20 AMP RC 5 RATED FUSED DISCONNECT. THE CIRCUIT SHALL BE DISCONNECTED IN THE HOISTWAY OR IN SIGHT OF THE CONTROLLER. ALL ELECTRICAL TO DISCONNECTS SHALL BE PROVIDED AND INSTALLED BY OTHERS (QUIST COMPLETELY WITH APPLICABLE CODES).

15- FIELD WIRE ELECTRICAL WIRING AND CONNECTIONS TO HALL-CALLS, PIT SWITCH AND 15- THE ILLUMINATION SHALL BE NOT LESS THAN 200 LX (19 FPD) AT THE FLOOR LEVEL IN ALL MACHINE ROOMS AND HOISTWAY SPACES. THE SWITCH FOR THE LIGHT MUST BE WITHIN 457 mm (18 3/4") OF THE HOISTWAY ACCESS. THE LIGHT MUST BE GUARDED TO PREVENT ACCIDENTAL BREAKAGE OR CONTACT WITH THE HOT WIRE. THE SWITCH, LIGHT, AND WIRING AND ARE PROVIDED AND INSTALLED BY OTHERS. (QUIST COMPLETELY WITH APPLICABLE CODES).

16- IF A TELEPHONE CIRCUIT IS REQUIRED (OPTION FOR ELEVATOR JACK IS PROVIDED AND INSTALLED BY OTHERS. THIS CIRCUIT SHALL BE BROUGHT TO A LOCATION NEXT TO THE CONTROLLER AND BE AVAILABLE TO CONNECT AND TEST UPON ELEVATOR INSTALLATION.

17- FIELD WIRE ELECTRICAL WIRING AND CONNECTIONS TO HALL-CALLS, PIT SWITCH AND 15- THE ILLUMINATION SHALL BE NOT LESS THAN 200 LX (19 FPD) AT THE FLOOR LEVEL IN ALL MACHINE ROOMS AND HOISTWAY SPACES. THE SWITCH FOR THE LIGHT MUST BE WITHIN 457 mm (18 3/4") OF THE HOISTWAY ACCESS. THE LIGHT MUST BE GUARDED TO PREVENT ACCIDENTAL BREAKAGE OR CONTACT WITH THE HOT WIRE. THE SWITCH, LIGHT, AND WIRING AND ARE PROVIDED AND INSTALLED BY OTHERS. (QUIST COMPLETELY WITH APPLICABLE CODES).

18- FROM CONTROLLER ROOM TO RUNWAY AS REQUIRED.

***CODE**

19- ALTHOUGH THE ELEVATOR IS DESIGNED TO MEET CSA B44 (ANSI A17.1) LOCAL CODES MAY VARY. DEALER IS RESPONSIBLE FOR COMPLYING WITH LOCAL CODES.

NOTE A

ALL COMPONENTS WEIGHTS CAN BE FOUND IN THE PLANNING GUIDE

NOTE B

ALL INFORMATION IS SUBJECT TO CHANGE.

PLEASE REFERENCE OUR ON-LINE DRAWINGS AT WWW.SAVARIACONCORD.COM FOR THE MOST RECENT UPDATES

RESIDENTIAL ELEVATOR

ECLIPSE MODEL 36X48 TYPE 1L