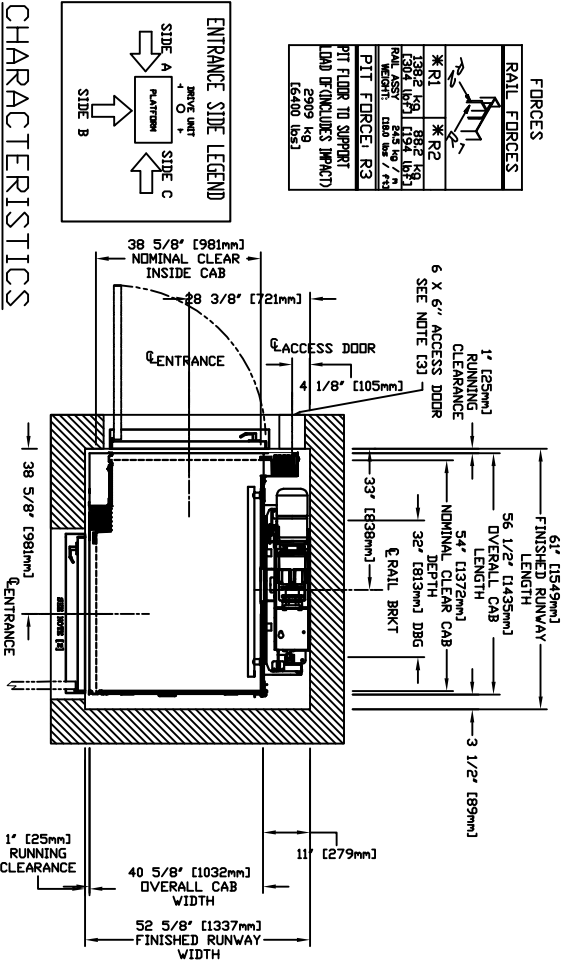
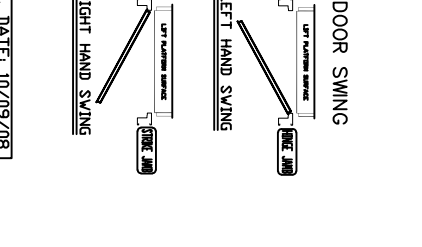
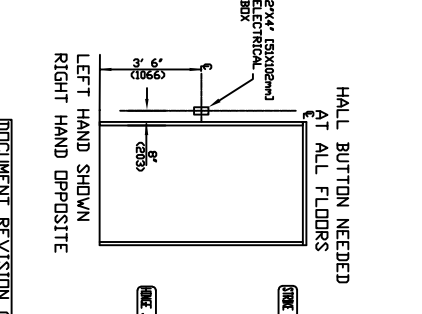


FINAL RAIL BRACKET RB3	BELOW THE MOTOR CONSULT YOUR REPRESENTATIVE FOR LOCATION
INTERMEDIATE RAIL BRACKET RB2	32" (813mm) INTERVALS AFTER 2ND BOTTOM BRACKET
BOTTOM RAIL BRACKET RB1	44" (1118mm) & ABOVE PIT FLOOR



### FORCES

RAIL FORCES	RB1 RB2 RB3
ENTRANCE SIDE LEGEND	SIDE A, SIDE B, SIDE C

### CHARACTERISTICS

APPLIED CODE: \_\_\_\_\_

CAPACITY: \_\_\_\_\_ (750, 1000 LBS)

NOMINAL SPEED: \_\_\_\_\_ 40 FPM

TRAVEL: \_\_\_\_\_

PIT DEPTH: \_\_\_\_\_ (MIN. 6')

CAR DETAILS

CAB PANEL SELECTION: \_\_\_\_\_ (SEE CHART)

CEILING SELECTION: \_\_\_\_\_ (V/T/MATCH)

CAB FLOORING: \_\_\_\_\_ (P/L/V, FINISH)

FINISHED FLOOR THICKNESS: \_\_\_\_\_ (1/8 TO 3/4')

CAB HEIGHT: \_\_\_\_\_ (80, 96')

CAB OPERATION: \_\_\_\_\_ (A/AUTD)

GATE TYPE: \_\_\_\_\_ (V/FOLD, C/FOLD, CAB STILL)

LOCKS/CALL STATIONS/TRAVEL/DOORS (BY OTHERS)

TRAVEL: \_\_\_\_\_

ENTRANCE SIDE: \_\_\_\_\_

DOOR SWING: \_\_\_\_\_

LOCK TYPE: \_\_\_\_\_

AUTO DOOR OP: \_\_\_\_\_

### DRIVE UNIT

CONCORD MOTOR MODEL \_\_\_\_\_

GEAR RATIO \_\_\_\_\_

DRIVE ASSEMBLY MFR: \_\_\_\_\_

### SUSPENSION

DUAL #60 ROLLER CHAIN

NOMINAL STRENGTH: \_\_\_\_\_ 9020 LBS PER CHAIN

ELECTRICAL POWER SUPPLY: \_\_\_\_\_ 60 Hz/1 Phase/230 volt

### GENERAL

FINISHED RUNWAY LENGTH \_\_\_\_\_ 61' (1549mm)

OVERBALL CAB LENGTH \_\_\_\_\_ 56 1/2" (1435mm)

NOMINAL CLEAR CAB DEPTH \_\_\_\_\_ 54" (1372mm)

ENTRANCE CLEARANCE \_\_\_\_\_ 38 5/8" (981mm)

OVERALL CAB WIDTH \_\_\_\_\_ 40 5/8" (1032mm)

FINISHED RUNWAY WIDTH \_\_\_\_\_ 56 5/8" (1437mm)

### PROVISIONS BY OTHERS

\*HOSTWAY CONSTRUCTION SITE CLEARANCE

- HOSTWAY CONSTRUCTION AND PIT BY OTHERS. DUE TO LIMITED SPACE WITHIN THE HOSTWAY IT IS ESSENTIAL THAT THE PIT IS LEVEL AND WALLS ARE SQUARE AND PLUMB THROUGHOUT THE HOSTWAY. THE HOSTWAY FRAMING MUST BE WITHIN 1/8" (1/2") OF PLUMB AND SQUARE FROM TOP TO BOTTOM FOR PROPER OPERATION OF THE ELEVATOR THROUGHOUT THE HOSTWAY.
- DISTANCE BETWEEN THE HOSTWAY SIDE OF THE LANDING DOOR AND THE CAR DOOR MUST BE 36" (914mm) MINIMUM. THE DISTANCE BETWEEN THE HOSTWAY SIDE OF THE LANDING DOOR AND THE CAR DOOR MUST BE 36" (914mm) MINIMUM. THE DISTANCE BETWEEN THE HOSTWAY SIDE OF THE LANDING DOOR AND THE CAR DOOR MUST BE 36" (914mm) MINIMUM.
- HOSTWAY MUST HAVE A MINIMUM 152 mm x 152 mm (6" x 6") LOCKABLE ACCESS HATCH PROVIDED BY SAVARIA CONCORD LOCATED AT THE TOP OF THE HOSTWAY. THE HATCH MUST BE 36" (914mm) MINIMUM. THE HATCH MUST BE 36" (914mm) MINIMUM.
- THE PIT FLOOR SHALL BE CONSTRUCTED TO WITHSTAND AN IMPACT LOAD OF 2000 LBS (907 kg) REF. CSA B44 SECTION 2118 (ANSI A71.1, SECTION 106.3) TO THE DEPTH OF THE PIT. THE DEPTH OF THE PIT SHALL BE 48" (1219mm) MINIMUM. THE PIT SHALL BE 48" (1219mm) MINIMUM.
- HOSTWAY CONSTRUCTION REQUIREMENTS MAY VARY FROM REGION TO REGION. DIMENSIONS GIVEN ARE MANUFACTURERS RECOMMENDED CLEARANCES. THEY REFLECT DIMENSIONS AND ACCESS CLEARANCES. CONSULT YOUR LOCAL AUTHORITY TO ASSURE COMPLIANCE WITH FEDERAL AND LOCAL CODES.

### DIMENSIONS WARNING

CONTRACTOR/CUSTOMER TO VERIFY ALL DIMENSIONS AND REPORT ANY DISCREPANCIES TO OUR OFFICE IMMEDIATELY.

### STRUCTURAL

- A LADDER BEARING WALL IS REQUIRED TO SUPPORT RAIL REACTIONS AS SPECIFIED IN KEY TO RAIL REACTIONS ON DRAWING BUILDING CONTRACTOR TO CONTACT STRUCTURAL ENGINEER TO DETERMINE IF SUPPORTING WALL WILL SUSTAIN RAIL REACTIONS FOR COMPLYING WITH LOCAL CODES.
- DOOR FRAMES ARE NOT DESIGNED TO SUPPORT OVERHEAD/VAULT LOADS.
- ALL FULL HEIGHT DOORS MUST BE ALLOWED WITH THE DOOR CONTROLLER SHOWN ON PLAN. THE FULL HEIGHT DOORS MUST BE 82" (2083mm) HIGH BY 18" (457mm) WIDE WITH A MINIMUM CLEAR OPENING OF 81" (2057mm) HIGH BY 18" (457mm) WIDE.
- SEE INSTALLATION MANUAL FOR DETAILS ON THE INTERLOCKS. INTERLOCKS ARE REQUIRED FOR ALL FULL SIZE DOORS.

### ELECTRICAL

- THE ELEVATOR CONTROLLER IS 620 mm (2441) WIDE X 984 mm (3911) HIGH X 170 mm (671) DEEP. THE CONTROLLER IS PROVIDED BY SAVARIA CONCORD AND IS EITHER A. ATTACHED TO THE RAIL WALL INSIDE THE HOSTWAY BETWEEN THE PIT RAILS OR B. IN A REMOTE LOCATION EXTERNAL TO HOSTWAY THAT MEETS PROPER STRUCTURAL WALL TO SUPPORT THE CONTROLLER ON ALL 4 CORNERS. HOLE POSITION ARE = 597 mm (2350) WIDE BY 546 mm (2149) HIGH.
- ARRANGE FOR A POWER SUPPLY WITHIN SIGHT OR NEXT TO THE ELEVATOR CONTROLLER. THE POWER SUPPLY SHALL BE 208/240 VOLT CIRCUIT SHALL ORIGINATE FROM A LOCKABLE 2 POLE FUSED DISCONNECT 60 AMP RK 5 RATED FUSED LOCATED NEAR THE RESIDENCES INCLUDING ELECTRICAL PANEL. THE ELECTRICAL CIRCUIT PROVIDED FOR THE CONTROLLER SHALL BE 208/240 VOLT, SINGLE PHASE, DEDICATED CIRCUIT WITH NEUTRAL AND GROUND. FUSING MUST BE VOLT FOR 15 AMP SERVICE FOR CAR LIGHT. A LOCKABLE RATED 240 VOLT AND 15 VOLT DISCONNECT IS REQUIRED INSIDE THE HOSTWAY OR IN SIGHT OF THE CONTROLLER. ALL ELECTRICAL TO DISCONNECTS SHALL BE PROVIDED AND INSTALLED BY OTHERS (GUEST COMPLIANCE WITH APPLICABLE CODES AND CONNECTIONS TO HALL-CALLS, PIT SWITCH AND INTERLOCKS ARE PROVIDED).
- THE ILLUMINATION SHALL BE NOT LESS THAN 200 LX (9 Fc) AT THE FLOOR LEVEL IN ALL MACHINE ROOMS AND MACHINERY SPACES. THE SWITCH FOR THE LIGHT MUST BE WITHIN 1570 mm (6220) OF THE HOSTWAY ACCESS. THE LIGHT MUST BE GUARDED TO PREVENT CONTACT WITH THE LIGHT. THE LIGHT MUST BE GUARDED TO PREVENT CONTACT WITH THE LIGHT. THE LIGHT MUST BE GUARDED TO PREVENT CONTACT WITH THE LIGHT.
- IF A TELEPHONE CIRCUIT IS REQUIRED OPTION FOR ELEVATOR JACK IS PROVIDED AND INSTALLED BY OTHERS. THIS CIRCUIT SHALL BE TESTED UPON LANDING NEXT TO INSTALLATION.
- CONTRACTOR/CUSTOMER TO VERIFY ALL DIMENSIONS AND REPORT ANY DISCREPANCIES TO OUR OFFICE IMMEDIATELY.
- LOCATION / ACCESS - CONTROLLER ROOM - LOCATED AT THE LOWEST LEVEL. ADVANCE TO HOSTWAY, UNLESS SHOWN OTHERWISE ON THE LAYOUT DRAWINGS. FIELD ADJUSTMENT BY INSTALLER MAY BE NECESSARY TO MEET JOB SITE REQUIREMENTS. FIELD ADJUSTMENT BY INSTALLER MAY BE NECESSARY TO MEET JOB SITE REQUIREMENTS. FIELD ADJUSTMENT BY INSTALLER MAY BE NECESSARY TO MEET JOB SITE REQUIREMENTS.
- WHEN APPLICABLE, SLEEVES FOR ELECTRICAL LINES -
- FROM CONTROLLER ROOM TO RUNWAY AS REQUIRED.
- INSTALLATION PER INSTALLER'S INSTRUCTIONS.
- ALTHOUGH THE ELEVATOR IS DESIGNED TO MEET CSA B44 (ANSI A71.1), LOCAL AND NATIONAL VARIATIONS ARE RESPONSIBLE FOR COMPLIANCE WITH LOCAL CODES. ALL COMPONENTS WEIGHTS CAN BE FOUND IN THE PLANNING GUIDE.
- NOTE: ALL INFORMATION IS SUBJECT TO CHANGE. PLEASE REFERENCE OUR ON-LINE DRAWINGS AT WWW.SAVARIA.COM FOR THE MOST RECENT UPDATES.

### RESIDENTIAL ELEVATOR

#### ECLIPSE MODEL 36X54 TYPE 4

CUSTOMER: \_\_\_\_\_ DATE: \_\_\_\_\_

PROJECT: \_\_\_\_\_ REGION: \_\_\_\_\_

LOCATION: \_\_\_\_\_ CONTROL: \_\_\_\_\_

THE INFORMATION CONTAINED HEREIN IS THE EXCLUSIVE PROPERTY OF SAVARIA. NO PART OF THIS DOCUMENT MAY BE REPRODUCED OR TRANSMITTED IN ANY FORM OR BY ANY MEANS, ELECTRONIC OR MECHANICAL, INCLUDING PHOTOCOPYING, RECORDING, OR BY ANY INFORMATION STORAGE AND RETRIEVAL SYSTEM.

© 2011 Savaria Inc. All rights reserved.