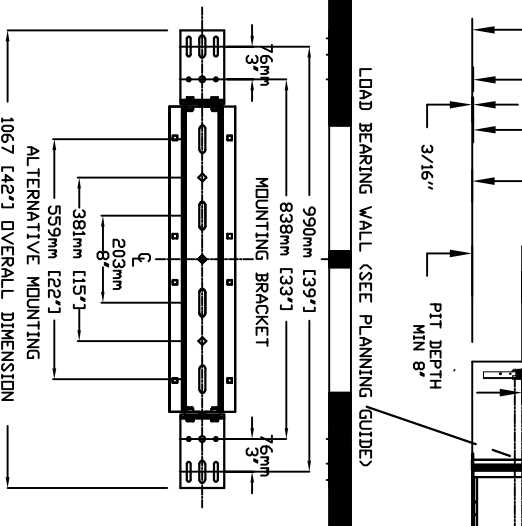
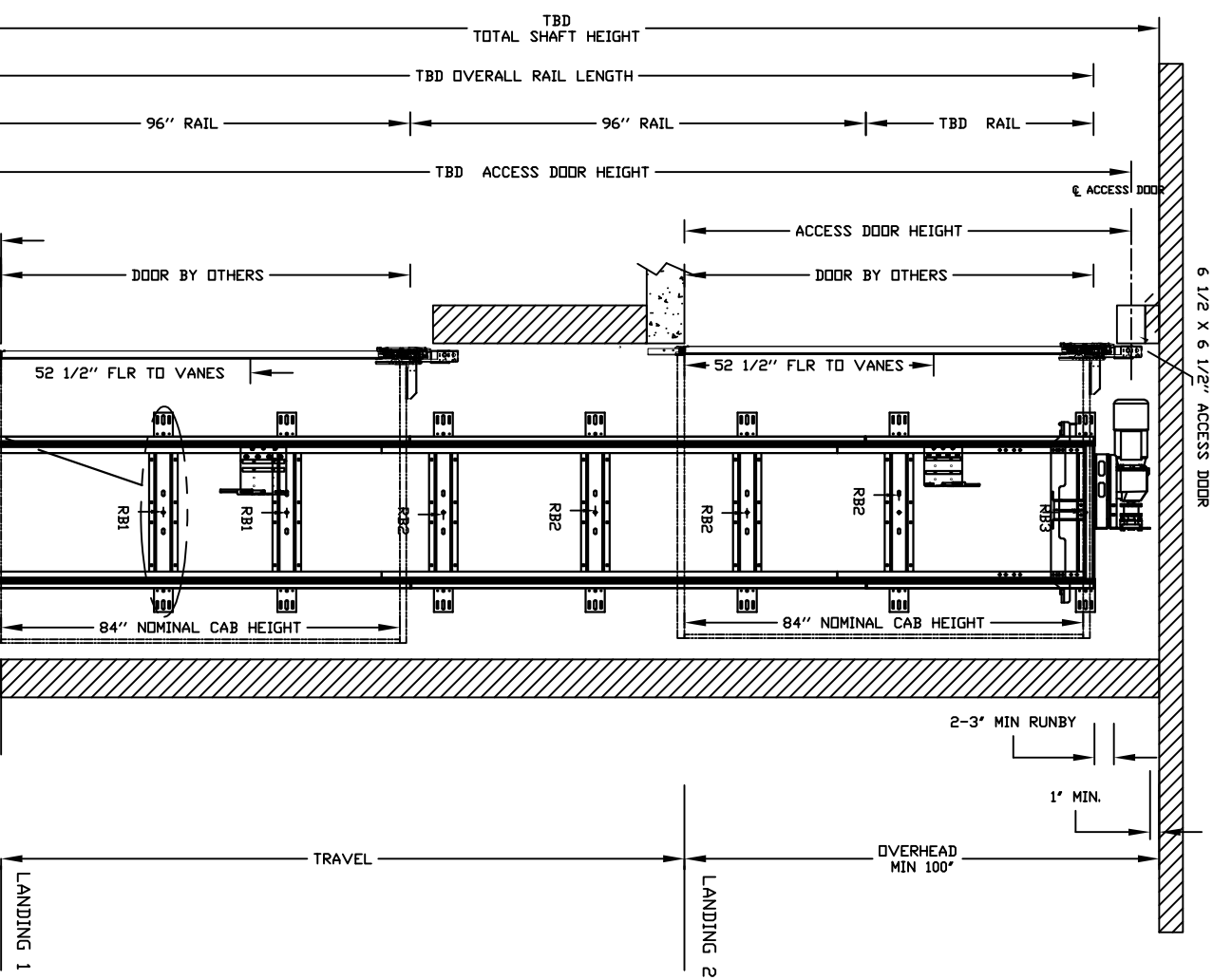


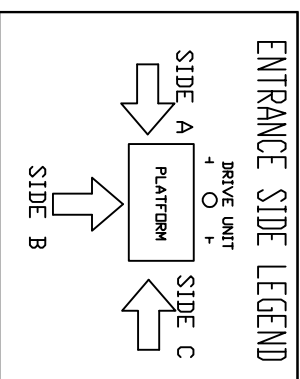
ECLIPSE AUTO SLIM DOORS W Swing Door Model TYPE 1L



MOUNTING BRACKET
 4 WALL ANCHOR POINTS MIN. PER BRACKET
 2 PER SIDE OF RAIL BRACKET CENTER LINE
 PULL OUT FORCE PER FASTENER 69 KG [152 LBS]

FINAL RAIL BRACKET	RB3	BELOW THE MOTOR CONCORD REPRESENTATIVE FOR EXACT LOCATION
INTERMEDIATE RAIL BRACKET	RB2	32" [813mm] INTERVALS AFTER 2nd BOTTOM BRACKET
BOTTOM RAIL BRACKET	RB1	44" [1118mm] & 71" [1804mm] ABOVE PIT FLOOR

RAIL FORCES	
*R1	*R2
138.2 kg [304 lbf]	88.2 kg [194 lbf]
RAIL ASSY WEIGHT: 180 lbs / ft	24.5 kg / m
PIT FLOOR TO SUPPORT LOAD (INCLUDES IMPACT) 2909 kg [6400 lbs]	



CLEAR INSIDE CAB WIDTH	CLEAR INSIDE CAB LENGTH	A		B		C		D			
		FINISHED RUNWAY WIDTH	FINISHED RUNWAY LENGTH	FINISHED RUNWAY WIDTH	FINISHED RUNWAY LENGTH	RAIL CENTER LINE	RAIL CENTER LINE	DOOR CENTER LINE	DOOR CENTER LINE		
914 mm	36 inches	1219 mm	48 inches	1499 mm	59 inches	1397 mm	55 inches	692 mm	27 1/4 inches	838 mm	33 inches
914 mm	36 inches	1372 mm	54 inches	1499 mm	59 inches	1549 mm	61 inches	768 mm	30 1/4 inches	838 mm	33 inches
914 mm	36 inches	1524 mm	60 inches	1499 mm	59 inches	1702 mm	67 inches	845 mm	33 1/4 inches	838 mm	33 inches
1016 mm	40 inches	1372 mm	54 inches	1524 mm	60 inches	1549 mm	61 inches	768 mm	30 1/4 inches	864 mm	34 inches

DOCUMENT REVISION 002, DATE: 08/28/18

RESIDENTIAL ELEVATOR

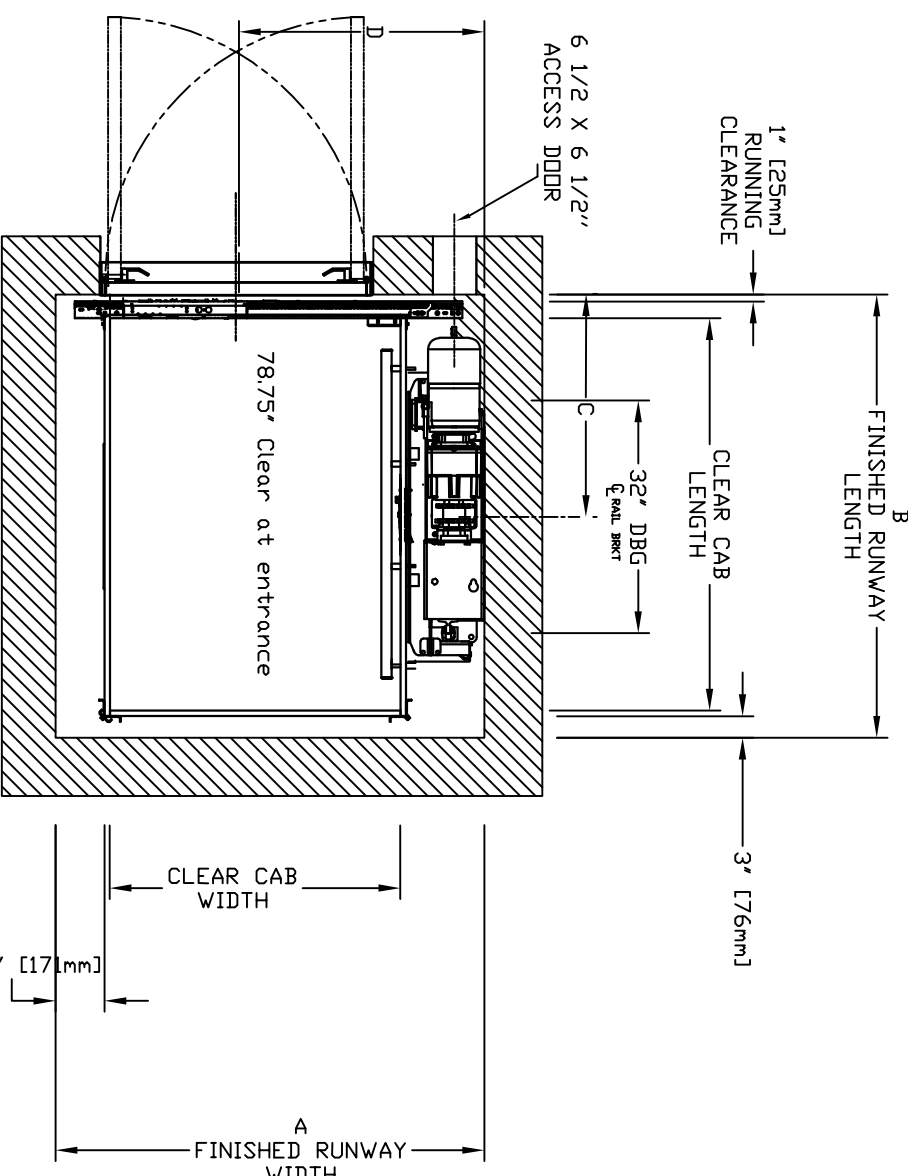
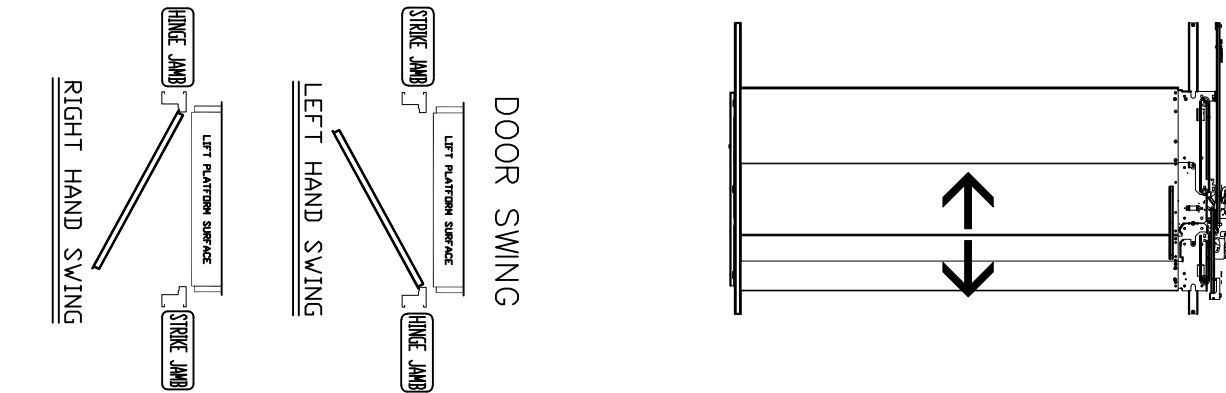
ECLIPSE SLIMS DOORS W Swing Door TYPE 1L

ALL INFORMATION IS SUBJECT TO CHANGE. PLEASE REFERENCE OUR ON-LINE DRAWINGS AT www.savaria.com FOR THE MOST RECENT UPDATES



CHARACTERISTICS

- CAB DOOR TYPE: AUTO SLIM 2 SPEED DOORS
- ENTRANCE DOOR TYPE: AUTO SLIM 2 SPEED DOORS
- 2 SPEED DOORS FINISH: PAINT OR STAINLESS STEEL
- FULLY AUTOMATIC OPERATION TO OPEN THE DOORS UPON ARRIVAL AT THE LANDING
- LIGHTWEIGHT ALUMINUM SILL
- EMERGENCY BACK-UP BATTERY SYSTEM
- INFRARED DETECTION SYSTEM TO RETRACT DOORS BEFORE HITTING AN OBSTRUCTION



CHARACTERISTICS