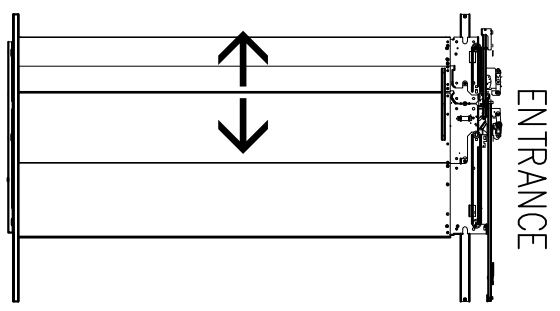
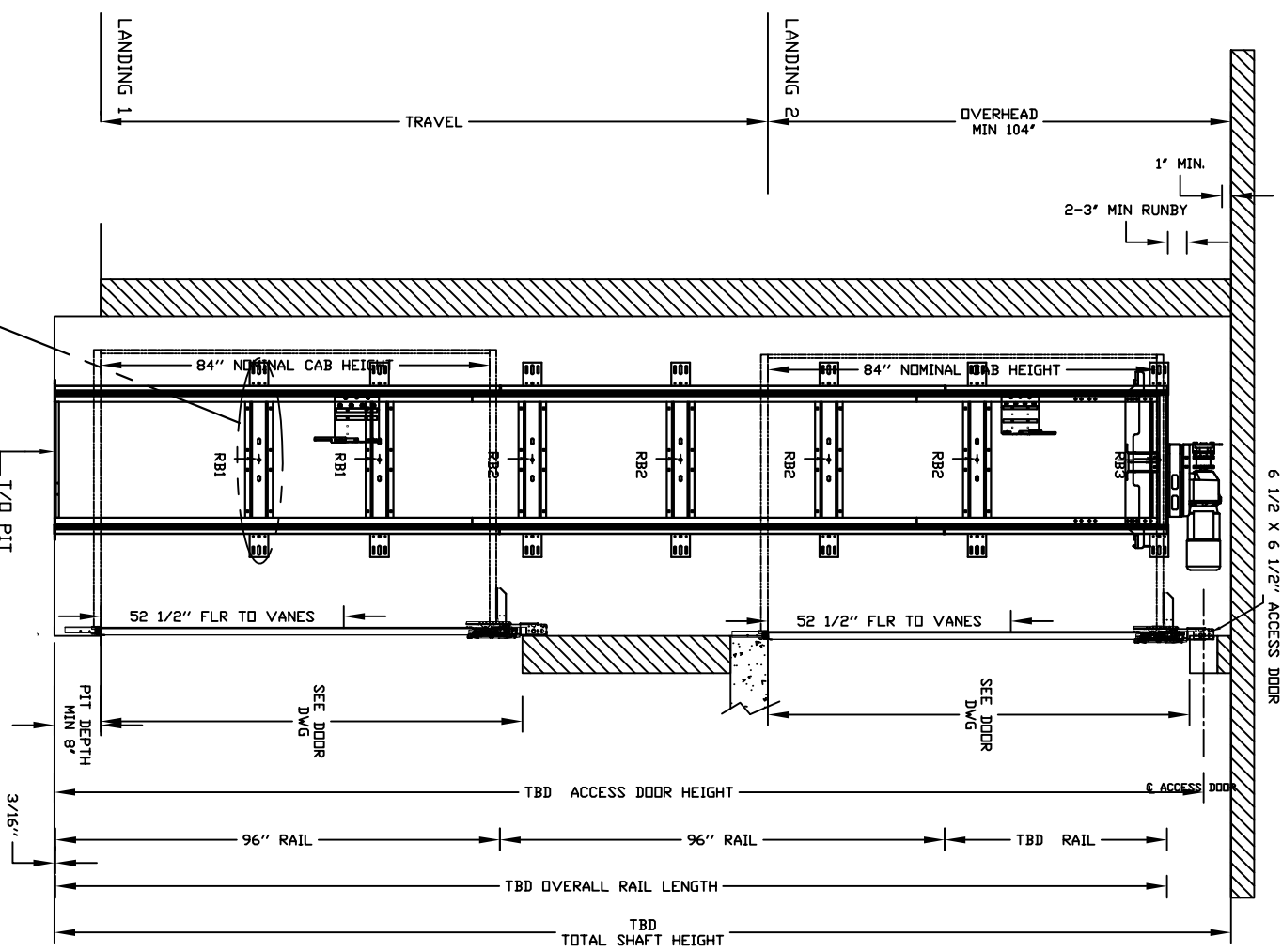


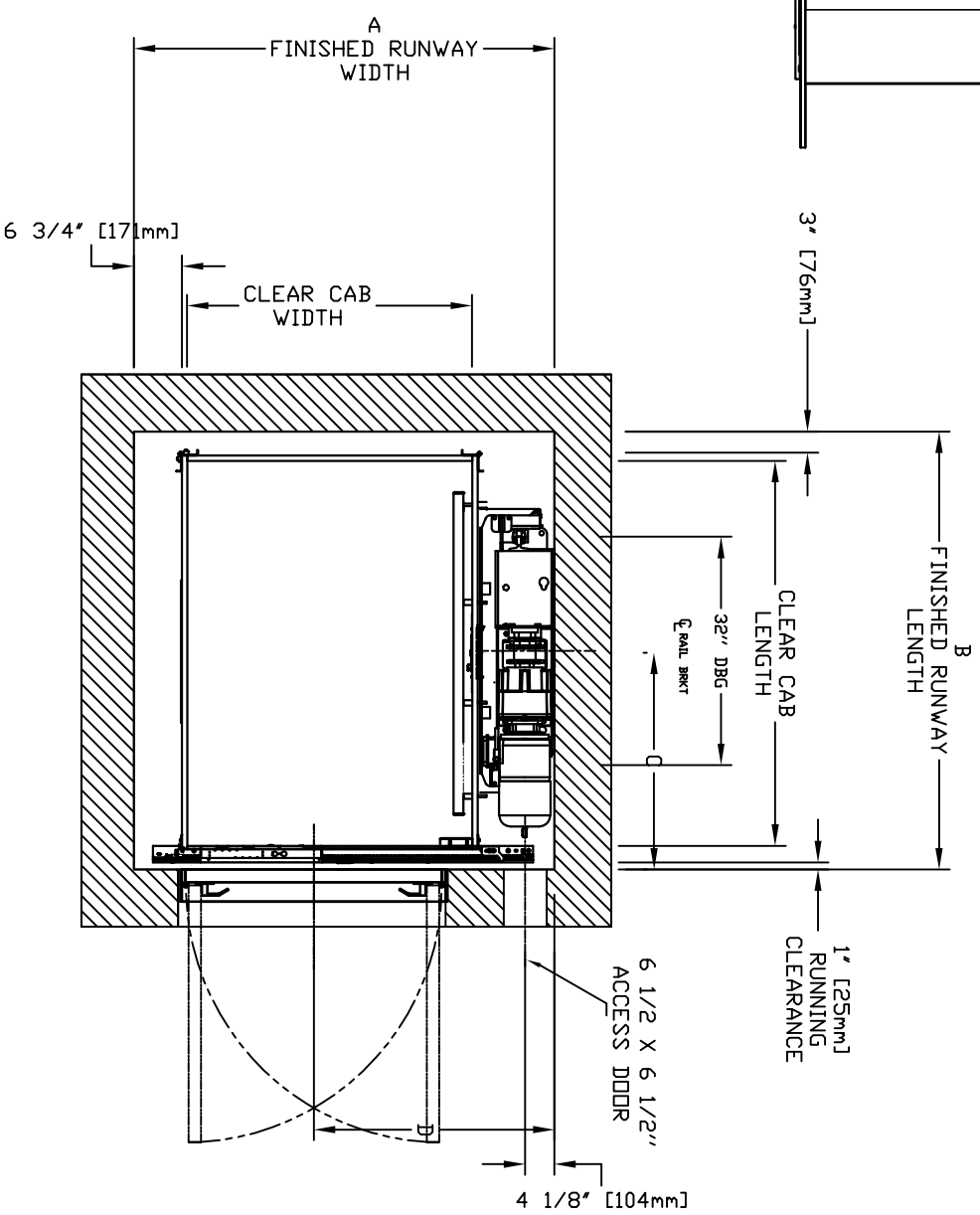
# ECLIPSE AUTO SLIM DOORS W Swing Door Model TYPE 1R



## ENTRANCE

## CHARACTERISTICS

- CAB DOOR TYPE: AUTO SLIM 2 SPEED DOORS
- ENTRANCE DOOR TYPE: AUTO SLIM 2 SPEED DOORS
- 2 SPEED DOORS FINISH: PAINT OR STAINLESS STEEL
- FULLY AUTOMATIC OPERATION TO OPEN THE DOORS UPON ARRIVAL AT THE LANDING
- LIGHTWEIGHT ALUMINUM SILL
- EMERGENCY BACK-UP BATTERY SYSTEM
- INFRARED DETECTION SYSTEM TO RETRACT DOORS BEFORE HITTING AN OBSTRUCTION

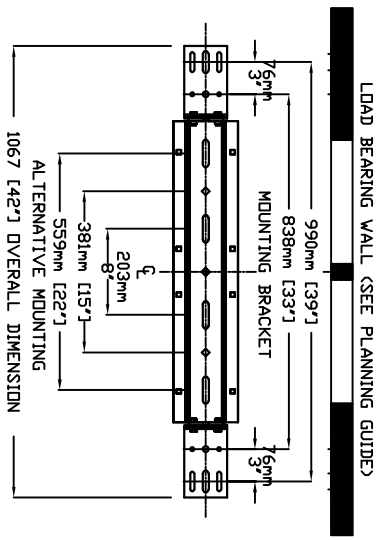


CLEAR INSIDE CAB WIDTH	CLEAR INSIDE CAB LENGTH	A		B		C		D	
		FINISHED RUNWAY WIDTH	FINISHED RUNWAY LENGTH	FINISHED RUNWAY LENGTH	FINISHED RUNWAY LENGTH	RAIL CENTER LINE	DOOR CENTER LINE	RAIL CENTER LINE	DOOR CENTER LINE
mm	mm	mm	mm	mm	mm	mm	mm	mm	mm
914	1219	48	1499	59	1397	55	692	27 1/4	838
Inches	Inches	Inches	Inches	Inches	Inches	Inches	Inches	Inches	Inches
36	48	59	1499	59	1397	55	692	27 1/4	838
914	1372	54	1499	59	1549	61	768	30 1/4	838
Inches	Inches	Inches	Inches	Inches	Inches	Inches	Inches	Inches	Inches
36	54	59	1499	59	1549	61	768	30 1/4	838
914	1524	60	1499	59	1702	67	845	33 1/4	838
Inches	Inches	Inches	Inches	Inches	Inches	Inches	Inches	Inches	Inches
36	60	59	1499	59	1702	67	845	33 1/4	838
1016	1372	54	1524	60	1549	61	768	30 1/4	864
Inches	Inches	Inches	Inches	Inches	Inches	Inches	Inches	Inches	Inches
40	54	54	1524	60	1549	61	768	30 1/4	864

DOCUMENT REVISION 002, DATE: 09/04/18

## RESIDENTIAL ELEVATOR ECLIPSE SLIMS DOORS W Swing Door TYPE 1R

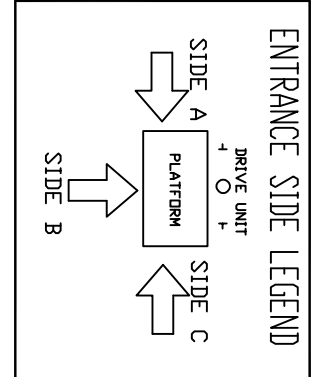
ALL INFORMATION IS SUBJECT TO CHANGE.  
PLEASE REFERENCE OUR ON-LINE DRAWINGS AT  
[www.savaria.com](http://www.savaria.com) FOR THE MOST RECENT UPDATES



RAIL BRACKET	BELOW THE MOTOR CONCORD REPRESENTATIVE FOR EXACT LOCATION	RAIL FORCES
FINAL RAIL BRACKET RB3	BELOW THE MOTOR CONCORD REPRESENTATIVE FOR EXACT LOCATION	* R1
INTERMEDIATE RAIL BRACKET RB2	32" [813mm] INTERVALS AFTER 2nd BOTTOM BRACKET	* R2
BOTTOM RAIL BRACKET RB1	44" [1118mm] & 71" [1804mm] ABOVE PIT FLOOR	* R3

RAIL FORCES	PIT FORCE: R3
* R1	138.2 kg [304 lbf]
* R2	88.2 kg [194 lbf]
	24.5 kg / m [54 lbf / ft]
	180 lbs / ft
	2909 kg [6400 lbs]



MOUNTING BRACKET  
4 WALL ANCHOR POINTS MIN. PER BRACKET  
2 PER SIDE OF RAIL BRACKET CENTER LINE  
PULL OUT FORCE PER FASTENER 69 kg [152 LBS]