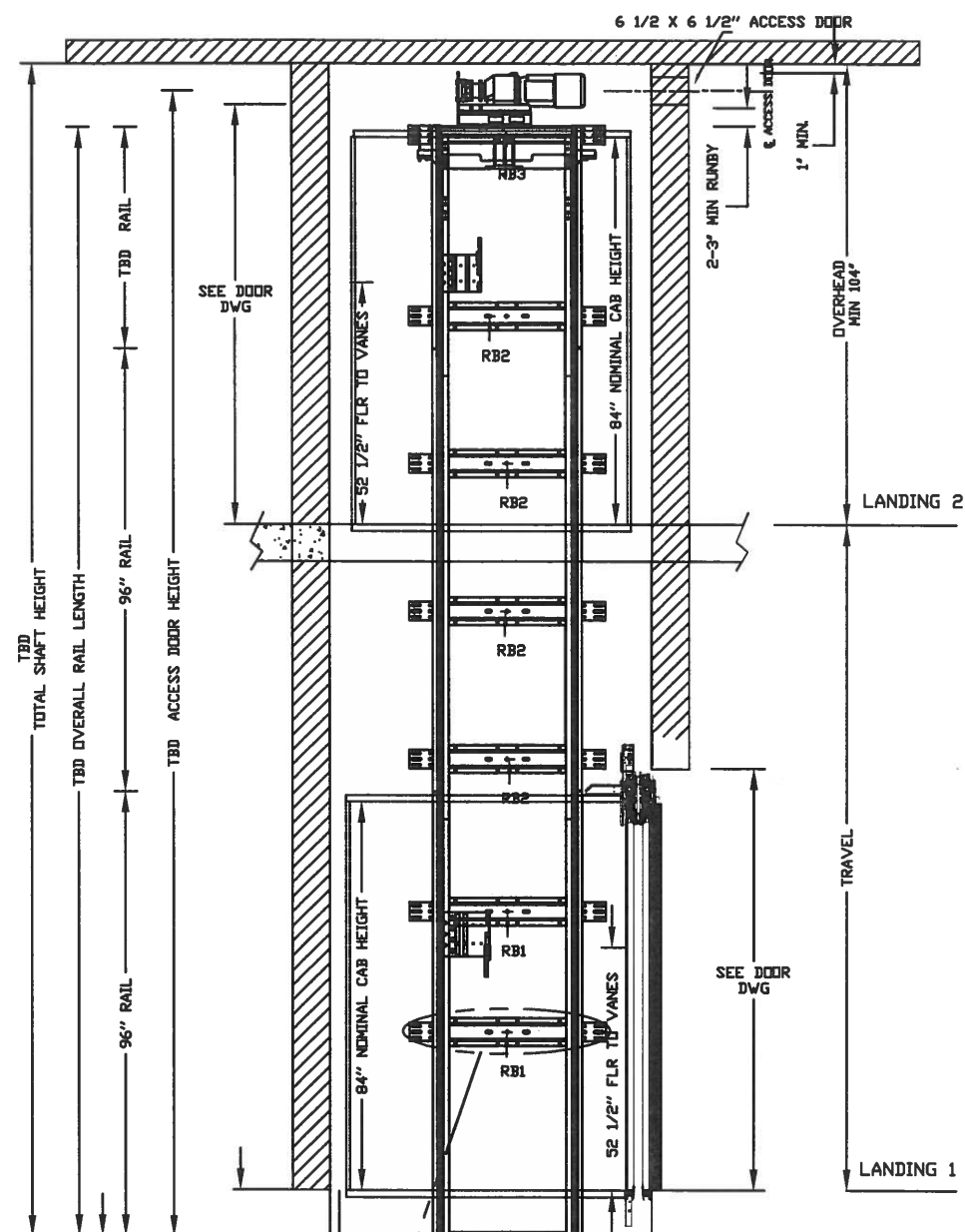
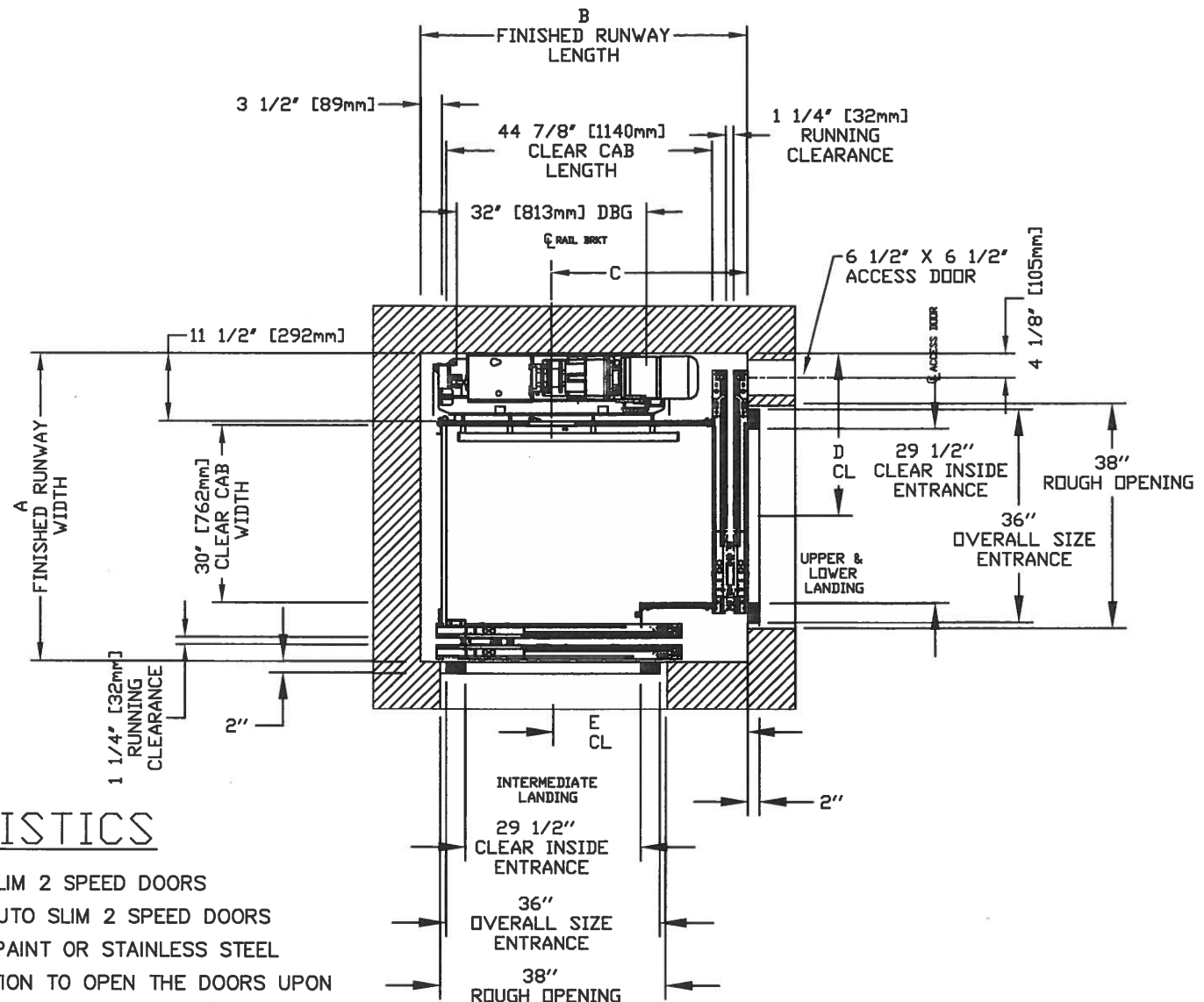
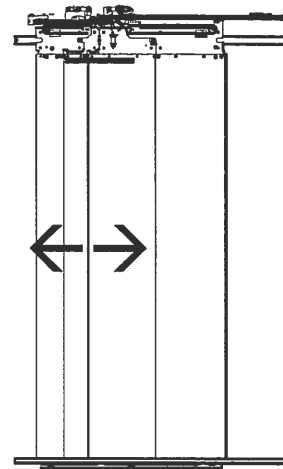


ECLIPSE AUTO SLIM DOORS Model TYPE 3-29 1/2"+SLIM

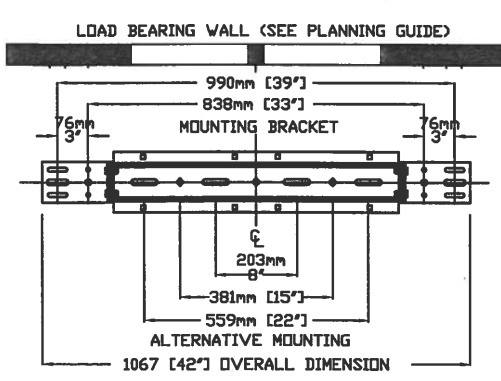


ENTRANCE



CHARACTERISTICS

- CAB DOOR TYPE: AUTO SLIM 2 SPEED DOORS
- ENTRANCE DOOR TYPE: AUTO SLIM 2 SPEED DOORS
- 2 SPEED DOORS FINISH: PAINT OR STAINLESS STEEL
- FULLY AUTOMATIC OPERATION TO OPEN THE DOORS UPON ARRIVAL AT THE LANDING LIGHTWEIGHT ALUMINUM SILL
- EMERGENCY BACK-UP BATTERY SYSTEM
- INFRARED DETECTION SYSTEM TO RETRACT DOORS BEFORE HITTING AN OBSTRUCTION



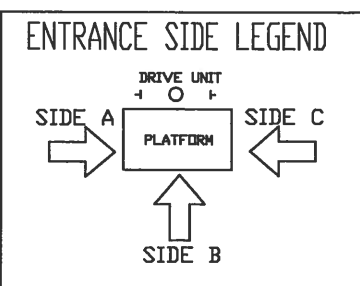
MOUNTING BRACKET
 4 WALL ANCHOR POINTS MIN. PER BRACKET
 2 PER SIDE OF RAIL BRACKET CENTER LINE
 PULL OUT FORCE PER FASTENER 69 kg [152 LBS]

CANNOT HAVE HABITABLE SPACE BELOW PIT

FINAL RAIL BRACKET RB3	BELOW THE MOTOR CONSULT YOUR CONCORD REPRESENTATIVE FOR EXACT LOCATION
INTERMEDIATE RAIL BRACKET RB2	32" [813mm] INTERVALS AFTER 2nd BOTTOM BRACKET
BOTTOM RAIL BRACKET RB1	39" [991mm] & 71" [1804mm] ABOVE PIT FLOOR

RAIL FORCES	
*R1	*R2
138.2 kg [304 lbf]	88.2 kg [194 lbf]
RAIL ASSY 24.5 kg / m	
WEIGHT: [18.0 lbs / ft]	
PIT FORCE: R3	
PIT FLOOR TO SUPPORT LOAD OF (INCLUDES IMPACT)	
2909 kg [6400 lbs]	

CLEAR INSIDE CAB WIDTH		CLEAR INSIDE CAB LENGTH		A FINISHED RUNWAY WIDTH		B FINISHED RUNWAY LENGTH		C RAIL CENTER LINE		D DOOR CENTER LINE		E DOOR CENTER LINE	
mm	Inches	mm	Inches	mm	Inches	mm	Inches	mm	Inches	mm	Inches	mm	Inches
762	30	1140	44 7/8	1324	52 1/8	1397	55	838	33	699	27 1/2	832	32 3/4
762	30	1292	50 7/8	1324	52 1/8	1549	61	838	33	699	27 1/2	984	38 3/4
762	30	1445	56 7/8	1324	52 1/8	1702	67	914	36	699	27 1/2	1137	44 3/4



DOCUMENT REVISION 000, DATE: 03/03/17

RESIDENTIAL ELEVATOR ECLIPSE SLIMS DOORS TYPE 3-29 1/2"+SLIM

ALL INFORMATION IS SUBJECT TO CHANGE. PLEASE REFERENCE OUR ON-LINE DRAWINGS AT www.savaria.com FOR THE MOST RECENT UPDATES

THE INFORMATION DISCLOSED HEREIN IS THE EXCLUSIVE PROPERTY OF

AND MAY NOT BE USED BY OTHERS WITHOUT PRIOR WRITTEN CONSENT

SHEET# 1/1

