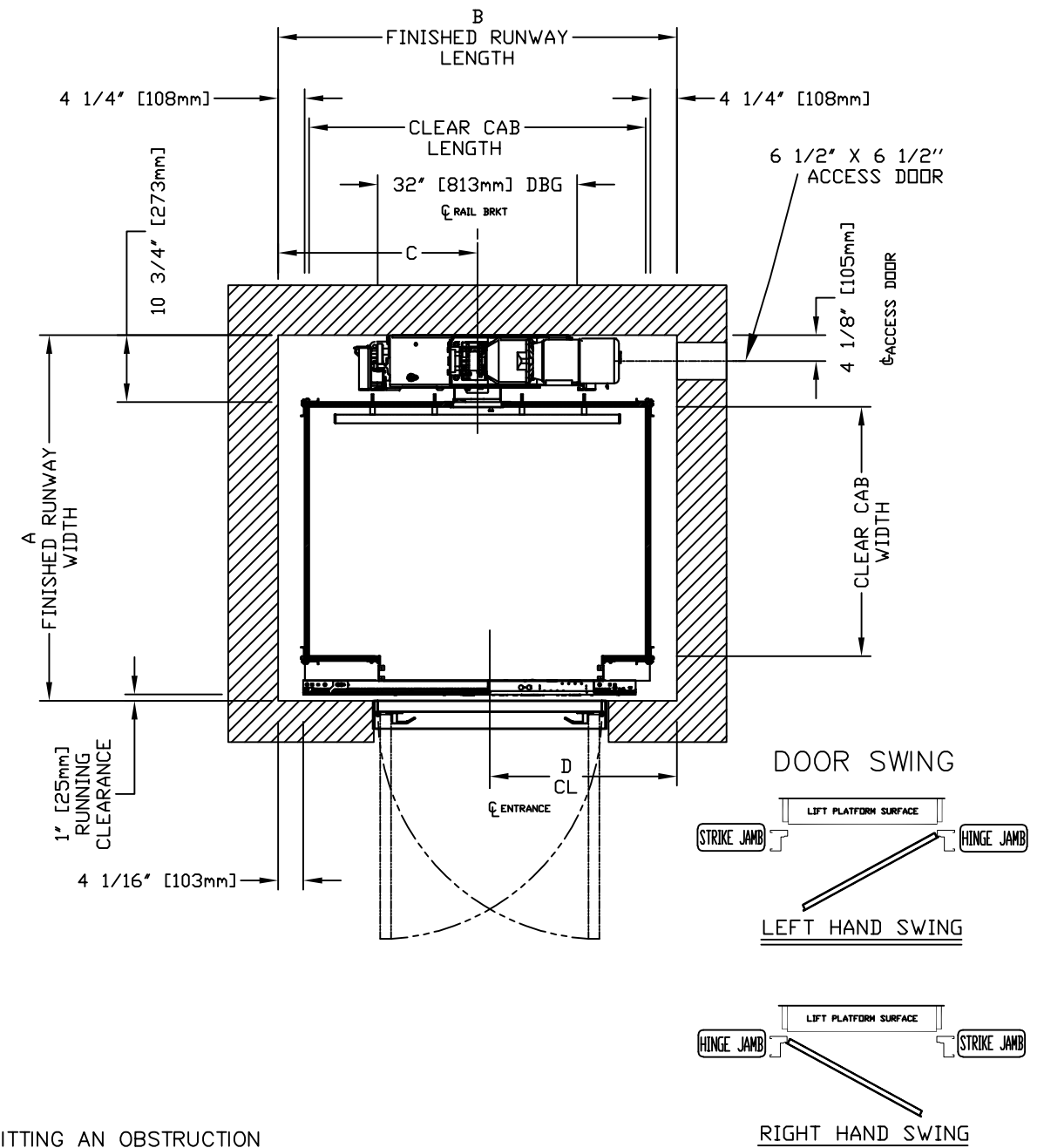
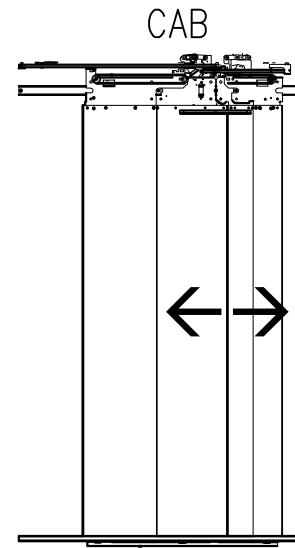
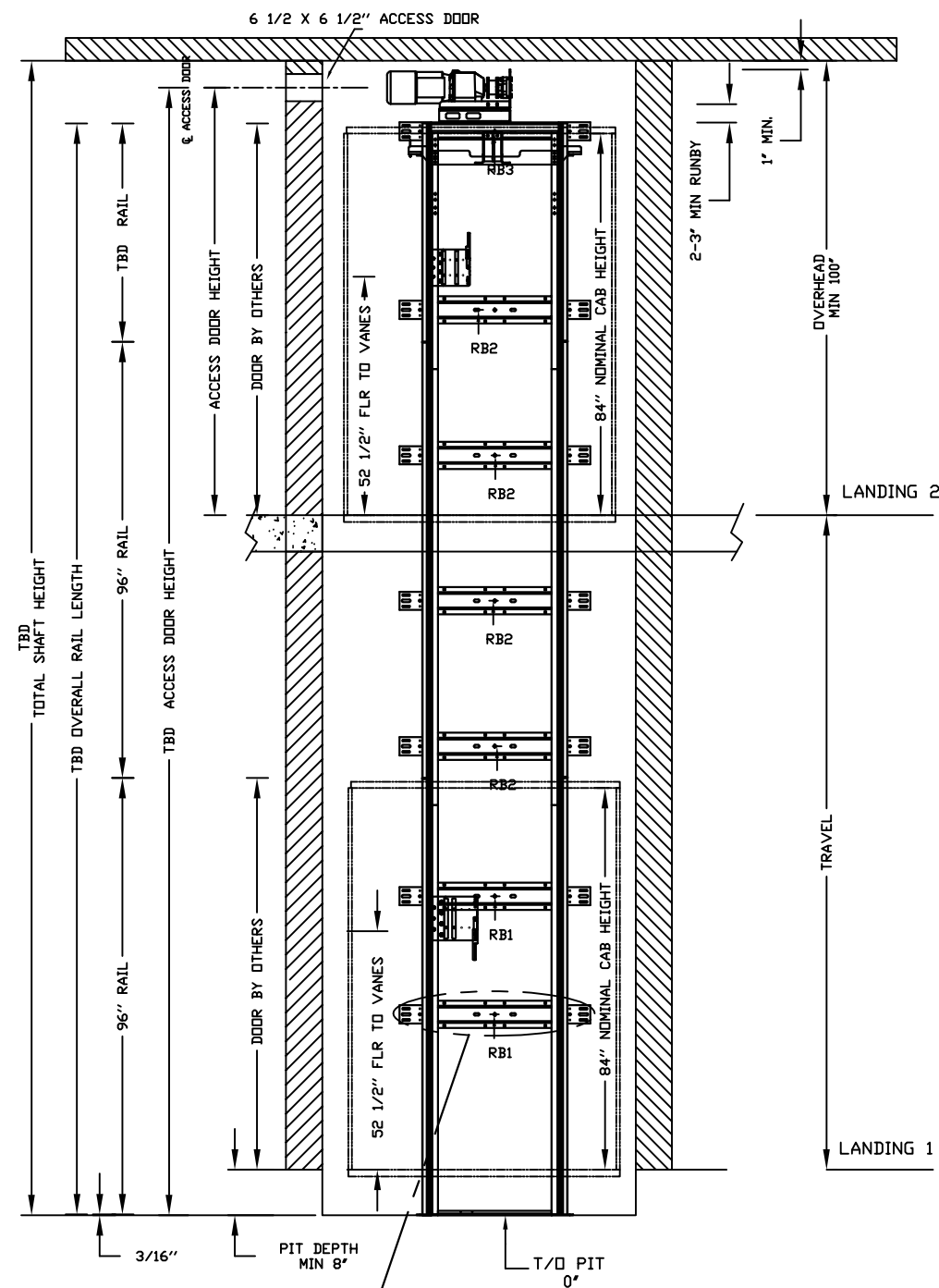
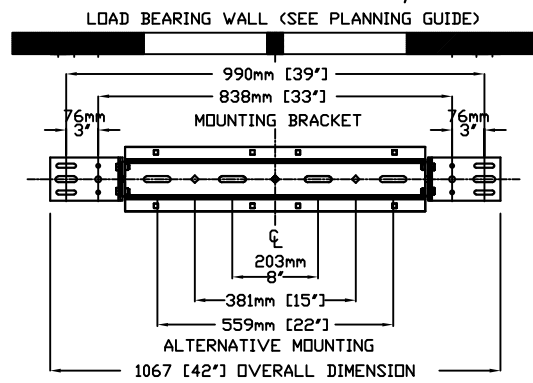


ECLIPSE AUTO SLIM DOORS W Swing Door Model TYPE 5



CHARACTERISTICS

- CAB DOOR TYPE: AUTO SLIM 2 SPEED DOORS
- ENTRANCE DOOR TYPE: AUTO SLIM 2 SPEED DOORS
- 2 SPEED DOORS FINISH: PAINT OR STAINLESS STEEL
- FULLY AUTOMATIC OPERATION TO OPEN THE DOORS UPON ARRIVAL AT THE LANDING
- LIGHTWEIGHT ALUMINUM SILL
- EMERGENCY BACK-UP BATTERY SYSTEM
- INFRARED DETECTION SYSTEM TO RETRACT DOORS BEFORE HITTING AN OBSTRUCTION



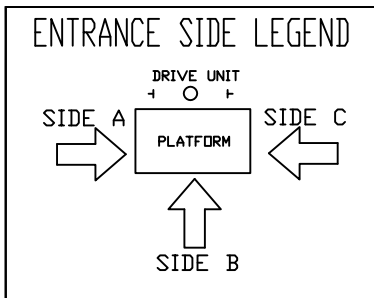
MOUNTING BRACKET
 4 WALL ANCHOR POINTS MIN. PER BRACKET
 2 PER SIDE OF RAIL BRACKET CENTER LINE
 PULL OUT FORCE PER FASTENER 69 kg [152 LBS]

CANNOT HAVE HABITABLE SPACE BELOW PIT

FINAL RAIL BRACKET RB3	BELOW THE MOTOR CONSULT YOUR CONCORD REPRESENTATIVE FOR EXACT LOCATION
INTERMEDIATE RAIL BRACKET RB2	32" [813mm] INTERVALS AFTER 2nd BOTTOM BRACKET
BOTTOM RAIL BRACKET RB1	44" [1118mm] & 71" [1804mm] ABOVE PIT FLOOR

RAIL FORCES	
*R1	*R2
138.2 kg [304 lbf]	88.2 kg [194 lbf]
RAIL ASSY WEIGHT: 24.5 kg / m [18.0 lbs / ft]	
PIT FORCE: R3	
PIT FLOOR TO SUPPORT LOAD OF (INCLUDES IMPACT) 2909 kg [6400 lbs]	

CLEAR INSIDE CAB WIDTH		CLEAR INSIDE CAB LENGTH		A FINISHED RUNWAY WIDTH		B FINISHED RUNWAY LENGTH		C RAIL CENTER LINE		D DOOR CENTER LINE	
mm	Inches	mm	Inches	mm	Inches	mm	Inches	mm	Inches	mm	Inches
914	36	1372	54	1391	54 3/4	1626	64	813	32	762	30
914	36	1524	60	1391	54 3/4	1778	70	889	35	762	30
1016	40	1372	54	1492	58 3/4	1626	64	813	32	762	30



DOCUMENT REVISION 002, DATE: 08/28/18

RESIDENTIAL ELEVATOR ECLIPSE SLIMS DOORS W Swing Door TYPE 5

ALL INFORMATION IS SUBJECT TO CHANGE.
 PLEASE REFERENCE OUR ON-LINE DRAWINGS AT
www.savaria.com FOR THE MOST RECENT UPDATES

THE INFORMATION DISCLOSED HEREIN IS THE EXCLUSIVE PROPERTY OF
 savaria
 AND MAY NOT BE USED BY OTHERS WITHOUT PRIOR WRITTEN CONSENT