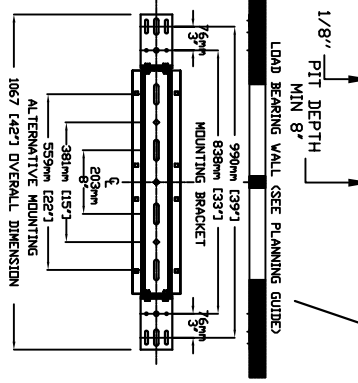
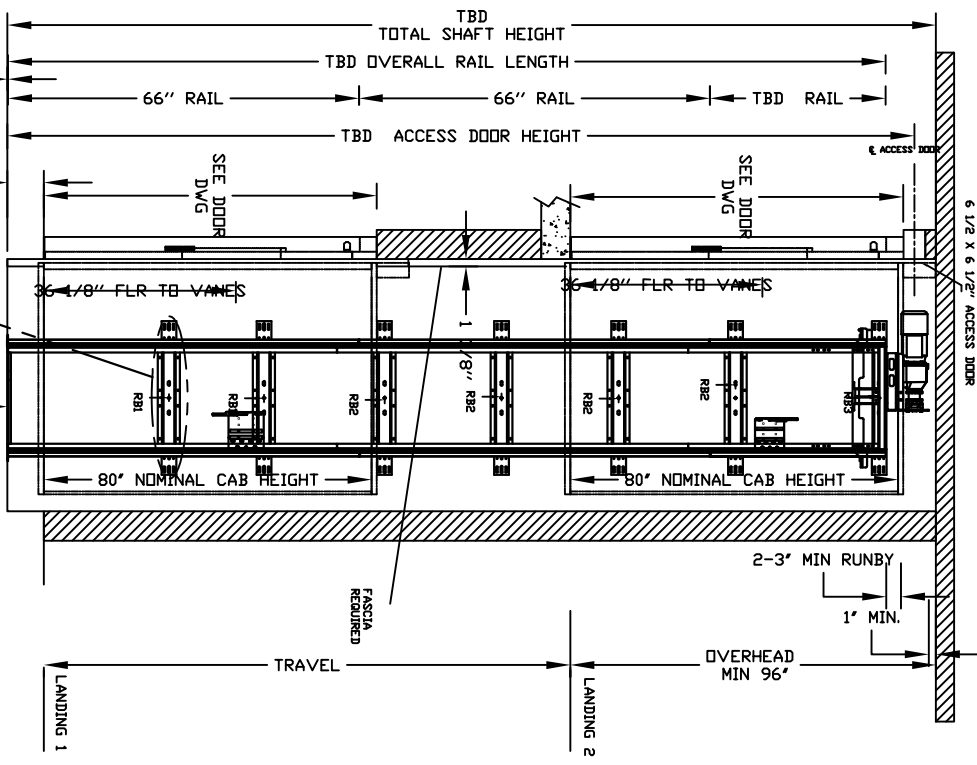
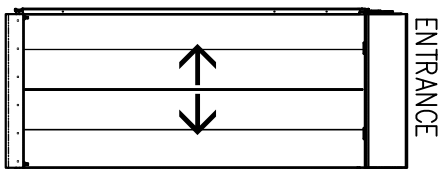


# ECLIPSE BIFOLD Model TYPE 1L



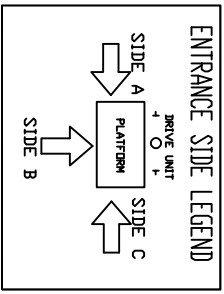
**MOUNTING BRACKET**  
 4 WALL ANCHOR POINTS MIN. PER BRACKET  
 2 PER SIDE OF RAIL BRACKET CENTER LINE  
 PULL OUT FORCE PER FASTENER 69 KG (152 LBS)



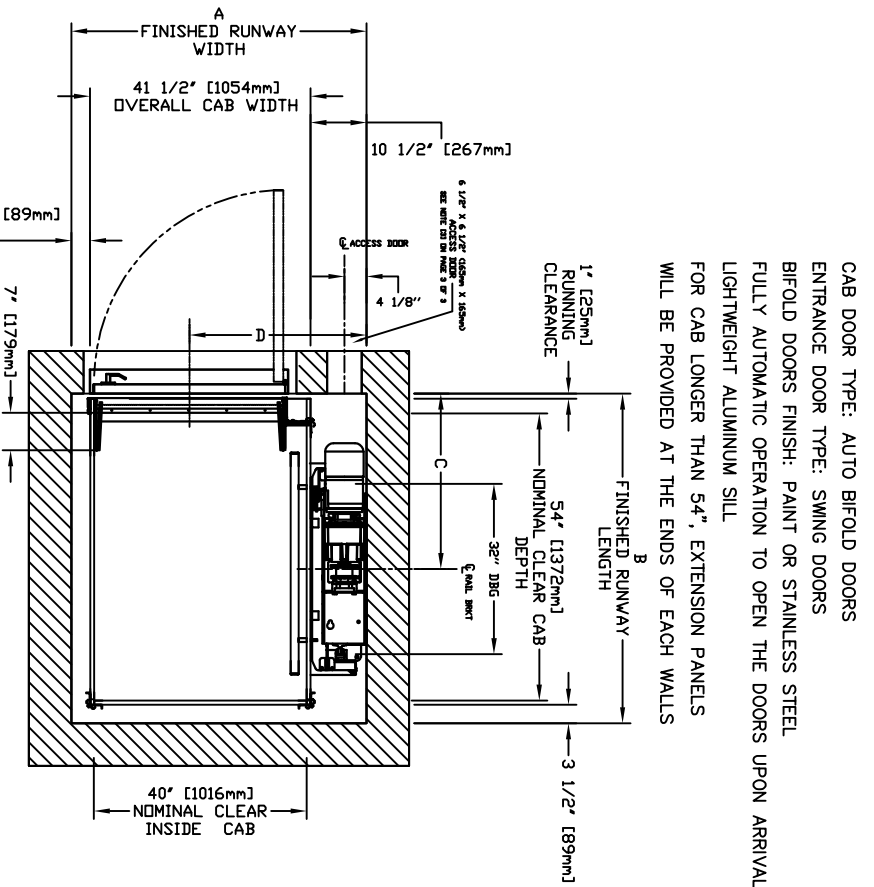
ENTRANCE

FINAL RAIL BRACKET RB3	BELOW THE MOTOR CONCORD REPRESENTATIVE FOR EXACT LOCATION
INTERMEDIATE RAIL BRACKET RB2	32" (813mm) INTERVALS AFTER 2nd BOTTOM BRACKET
BOTTOM RAIL BRACKET RB1	39" (991mm) & 71" (1804mm) ABOVE PIT FLOOR

<b>RAIL FORCES</b>	
*R1	*R2
1382 KG (304 lbf)	892 KG (194 lbf)
RAIL ASST. WEIGHT: 1580 lbf / 713	643 kg / 1415
PIT FLOOR TO SUPPORT LOAD OF (INCLUDES IMPACT)	
2909 KG (6400 lbf)	
16400 lbf	



NOMINAL CLEAR INSIDE CAB WIDTH	NOMINAL CLEAR INSIDE CAB LENGTH	FINISHED RUNWAY WIDTH	FINISHED RUNWAY LENGTH	FINISHED RUNWAY LENGTH	CENTER LINE	DOOR CENTER LINE
mm	mm	mm	mm	mm	mm	mm
1016	1219	1410	55 1/2	1422	56	845
1016	1372	1410	55 1/2	1575	62	845
1016	1499	1410	55 1/2	1702	67	845



## CHARACTERISTICS

CAB DOOR TYPE: AUTO BIFOLD DOORS  
 ENTRANCE DOOR TYPE: SWING DOORS  
 BIFOLD DOORS FINISH: PAINT OR STAINLESS STEEL  
 FULLY AUTOMATIC OPERATION TO OPEN THE DOORS UPON ARRIVAL AT THE LANDING LIGHTWEIGHT ALUMINUM SILL  
 FOR CAB LONGER THAN 54", EXTENSION PANELS WILL BE PROVIDED AT THE ENDS OF EACH WALLS

DOCUMENT REVISION 000, DATE: 01/25/17

## RESIDENTIAL ELEVATOR ECLIPSE BIFOLD TYPE 1L-40" WIDTH

ALL INFORMATION IS SUBJECT TO CHANGE.  
 PLEASE REFERENCE OUR ON-LINE DRAWINGS AT  
[WWW.SAVARIA.COM](http://WWW.SAVARIA.COM) FOR THE MOST RECENT UPDATES

