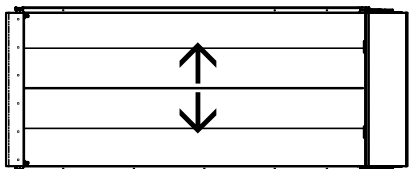
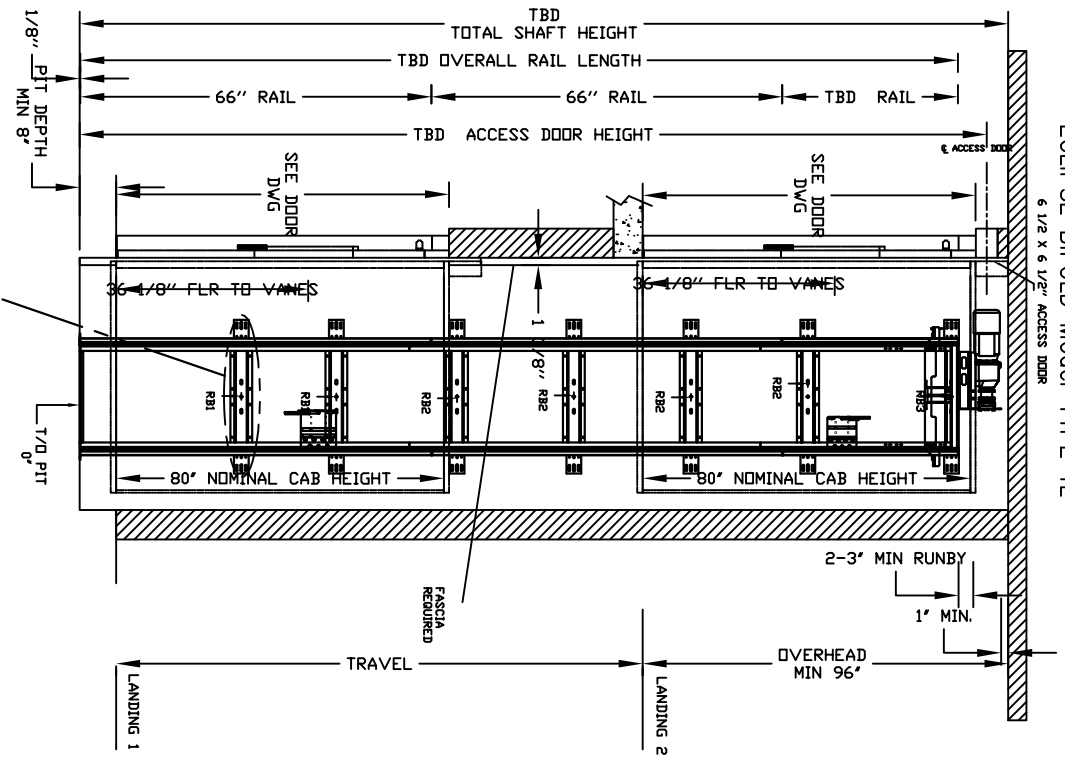


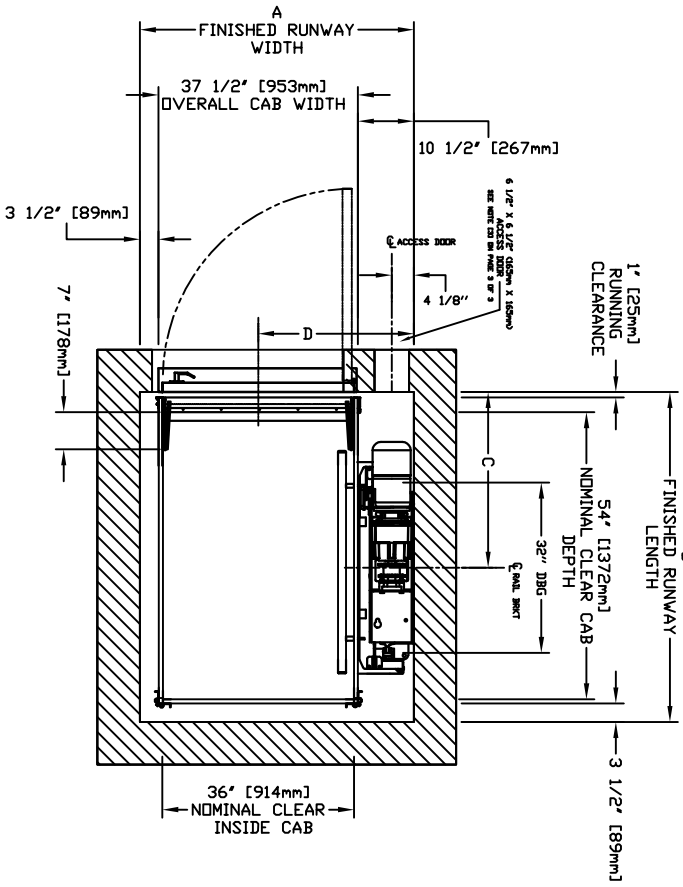
# ECLIPSE BIFOLD Model TYPE 1L



ENTRANCE

## CHARACTERISTICS

- CAB DOOR TYPE: AUTO BIFOLD DOORS
- ENTRANCE DOOR TYPE: SWING DOORS
- BIFOLD DOORS FINISH: PAINT OR STAINLESS STEEL
- FULLY AUTOMATIC OPERATION TO OPEN THE DOORS UPON ARRIVAL AT THE LANDING LIGHTWEIGHT ALUMINUM SILL
- FOR CAB LONGER THAN 54", EXTENSION PANELS WILL BE PROVIDED AT THE ENDS OF EACH WALLS

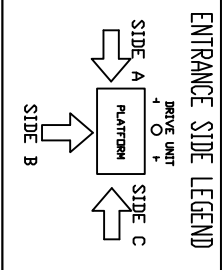


NOMINAL CLEAR INSIDE CAB WIDTH	NOMINAL CLEAR INSIDE CAB LENGTH	FINISHED RUNWAY WIDTH		FINISHED RUNWAY LENGTH		RAIL CENTER LINE		DOOR CENTER LINE	
		A	B	A	B	C	D	C	D
mm	mm	mm	mm	mm	mm	mm	mm	mm	mm
914	1219	1308	51 1/2	1422	56	762	30	743	29 1/4
914	1372	1308	51 1/2	1575	62	838	33	743	29 1/4
914	1499	1308	51 1/2	1702	67	914	36	743	29 1/4

DOCUMENT REVISION 000, DATE: 01/25/17

### RESIDENTIAL ELEVATOR

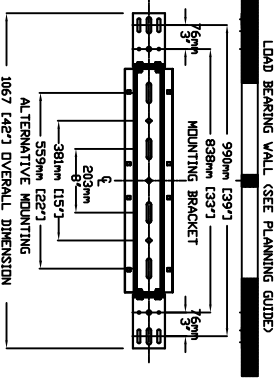
## ECLIPSE BIFOLD TYPE 1L-36" WIDTH



ALL INFORMATION IS SUBJECT TO CHANGE. PLEASE REFERENCE DUR DN-LINE DRAWINGS AT WWW.SAVARIA.COM FOR THE MOST RECENT UPDATES

THE INFORMATION DISCLOSED HEREIN IS THE EXCLUSIVE PROPERTY OF **savaria** AND MAY NOT BE USED BY OTHERS WITHOUT PRIOR WRITTEN CONSENT

SHEET # 1/1



4 WALL ANCHOR POINTS MIN. PER BRACKET  
2 PER SIDE OF RAIL BRACKET CENTER LINE  
PULL OUT FORCE PER FASTENER 69 Kg (152 LBS)

RAIL FORCES	RAIL BRACKET	BELOW THE MOTOR CONCORD REPRESENTATIVE FOR EXACT LOCATION
* R1	* R2	
1382 kg [3046 lb]	882 kg [1941 lb]	32" [813mm] INTERVALS AFTER 2nd BOTTOM BRACKET
2909 kg [6405 lb]	2909 kg [6405 lb]	39" [991mm] & 71" [1804mm] ABOVE PIT FLOOR
16400 lb [7435 kg]		

FINAL RAIL BRACKET	INTERMEDIATE RAIL BRACKET	BOTTOM RAIL BRACKET
RB3	RB2	RB1
32" [813mm] INTERVALS AFTER 2nd BOTTOM BRACKET	39" [991mm] & 71" [1804mm] ABOVE PIT FLOOR	71" [1804mm] ABOVE PIT FLOOR

\*CANNOT HAVE HABITABLE SPACE BELOW PIT\*

LOAD BEARING WALL (SEE PLANNING GUIDE)

1/8" PIT DEPTH MIN 8"

SEE DOOR DWG

SEE DOOR DWG

6 1/2" x 6 1/2" ACCESS DOOR

2-3" MIN RUNBY

1" MIN.

OVERHEAD MIN 96"

TRAVEL

LANDING 1

LANDING 2

ENTRANCE

CHARACTERISTICS

CAB DOOR TYPE: AUTO BIFOLD DOORS

ENTRANCE DOOR TYPE: SWING DOORS

BIFOLD DOORS FINISH: PAINT OR STAINLESS STEEL

FULLY AUTOMATIC OPERATION TO OPEN THE DOORS UPON ARRIVAL AT THE LANDING LIGHTWEIGHT ALUMINUM SILL

FOR CAB LONGER THAN 54", EXTENSION PANELS WILL BE PROVIDED AT THE ENDS OF EACH WALLS

FINISHED RUNWAY WIDTH

37 1/2" [953mm] OVERALL CAB WIDTH

10 1/2" [267mm]

6 1/2" x 6 1/2" ACCESS DOOR SEE DOOR DWG FOR MORE INFO

1" [25mm] RUNNING CLEARANCE

FINISHED RUNWAY LENGTH

54" [1372mm] NOMINAL CLEAR CAB

32" [813mm] [CAB SHIRT]

3 1/2" [89mm]

36" [914mm] NOMINAL CLEAR INSIDE CAB

NOMINAL CLEAR INSIDE CAB WIDTH

NOMINAL CLEAR INSIDE CAB LENGTH

FINISHED RUNWAY WIDTH A

FINISHED RUNWAY LENGTH B

RAIL CENTER LINE C

DOOR CENTER LINE D

ENTRANCE SIDE LEGEND

SIDE A PLATFORM

SIDE B

SIDE C

ALL INFORMATION IS SUBJECT TO CHANGE. PLEASE REFERENCE DUR DN-LINE DRAWINGS AT WWW.SAVARIA.COM FOR THE MOST RECENT UPDATES

THE INFORMATION DISCLOSED HEREIN IS THE EXCLUSIVE PROPERTY OF savaria AND MAY NOT BE USED BY OTHERS WITHOUT PRIOR WRITTEN CONSENT

SHEET # 1/1