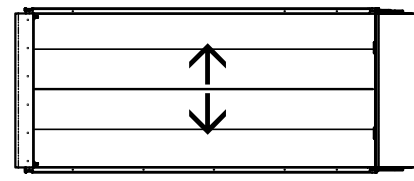
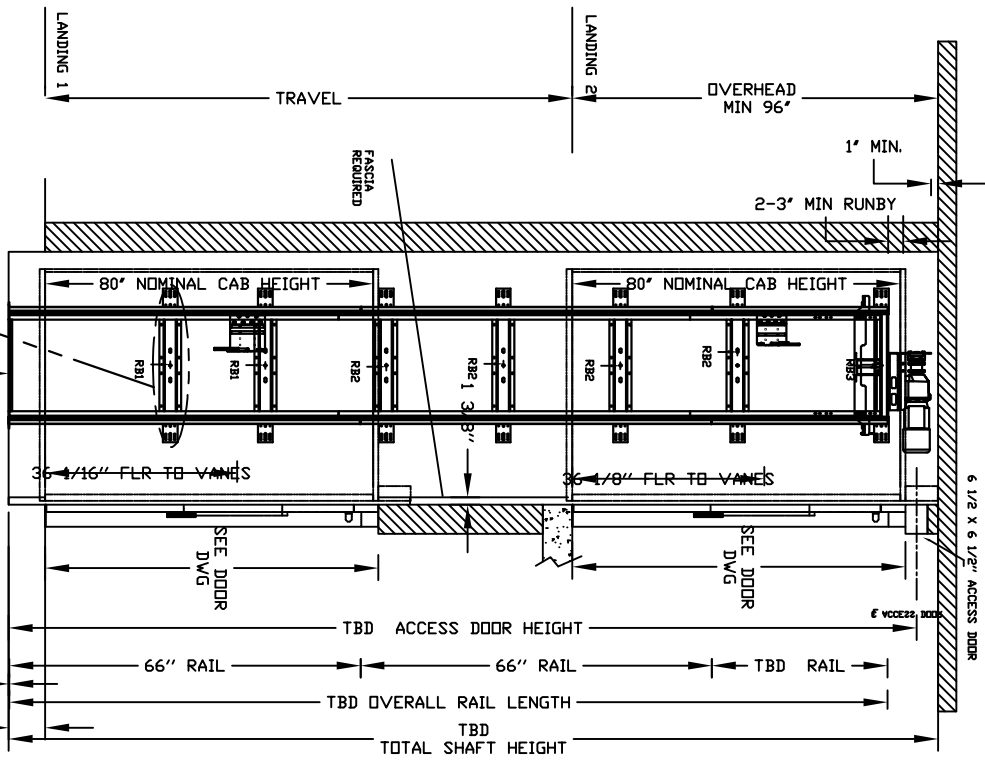


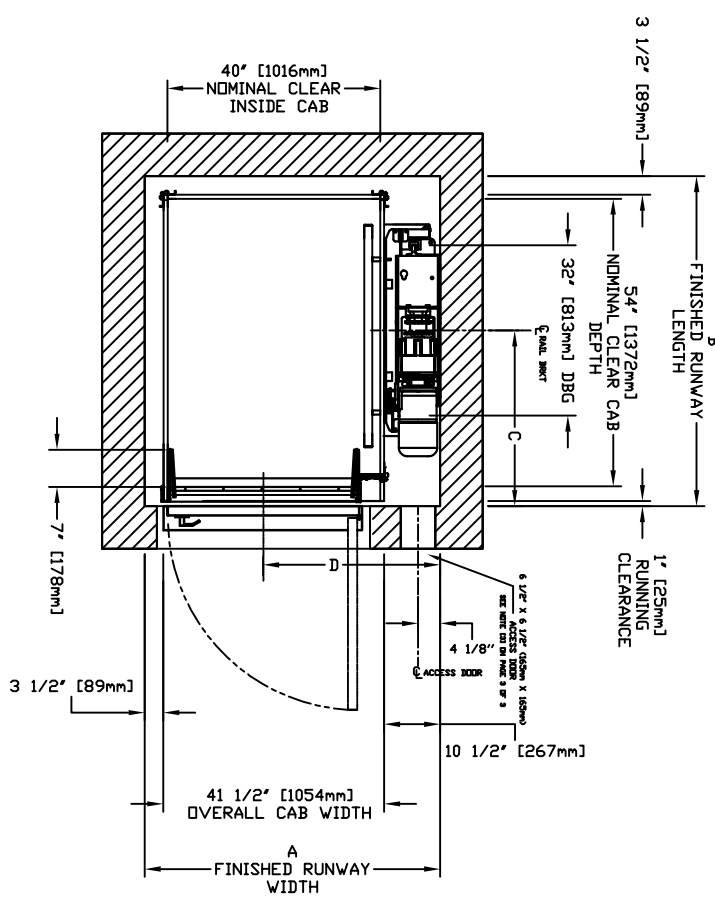
# ECLIPSE BIFOLD Model TYPE 1R



# ENTRANCE

# CHARACTERISTICS

- CAB DOOR TYPE: AUTO BIFOLD DOORS
- ENTRANCE DOOR TYPE: SWING DOORS
- BIFOLD DOORS FINISH: PAINT OR STAINLESS STEEL
- FULLY AUTOMATIC OPERATION TO OPEN THE DOORS UPON ARRIVAL AT THE LANDING
- LIGHTWEIGHT ALUMINUM SILL
- FOR CAB LONGER THAN 54" EXTENSION PANELS WILL BE PROVIDED AT THE ENDS OF EACH WALLS



NOMINAL CLEAR INSIDE CAB WIDTH	NOMINAL CLEAR INSIDE CAB LENGTH	FINISHED RUNWAY WIDTH		FINISHED RUNWAY LENGTH		RAIL CENTER LINE		DOOR CENTER LINE			
		mm	Inches	mm	Inches	mm	Inches	mm	Inches		
1016	40	1219	48	1410	55 1/2	1422	56	762	30	845	33 1/4
1016	40	1372	54	1410	55 1/2	1575	62	838	33	845	33 1/4
1016	40	1499	59	1410	55 1/2	1702	67	914	36	845	33 1/4

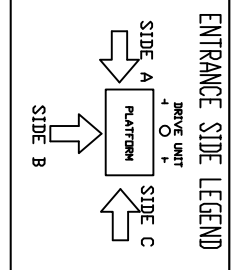
DOCUMENT REVISION 000. DATE: 01/25/17

## RESIDENTIAL ELEVATOR ECLIPSE BIFOLD TYPE 1R-40" WIDTH

RAIL FORCES	
*R1	*R2
1382 kg [3046 lb]	882 kg [1941 lb]
RAIL WEIGHT: 180 lbs / 43	
PIT FLOOR TO SUPPORT LOAD (INCLUDES IMPACT)	
2909 kg [6400 lbs]	

FINAL RAIL BRACKET	BELOW THE MOTOR CONSOLID REPRESENTATIVE LOCATION
RB3	
INTERMEDIATE RAIL BRACKET	32" [813mm] INTERVALS AFTER 2nd BOTTOM BRACKET
RB2	
BOTTOM RAIL BRACKET	39" [991mm] & 71" [1804mm] ABOVE PIT FLOOR
RB1	

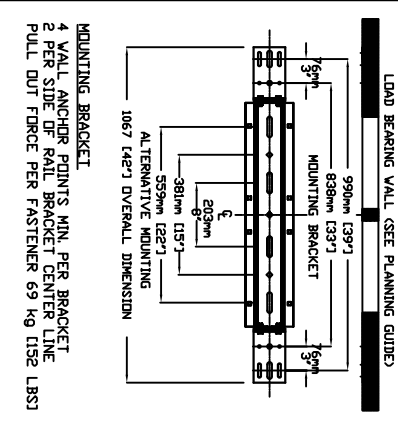


ALL INFORMATION IS SUBJECT TO CHANGE. PLEASE REFERENCE OUR ON-LINE DRAWINGS AT WWW.SAVARIA.COM FOR THE MOST RECENT UPDATES

THE INFORMATION DISCLOSED HEREIN IS THE EXCLUSIVE PROPERTY OF **savaria**

AND MAY NOT BE USED BY OTHERS WITHOUT PRIOR WRITTEN CONSENT

SHEET 1/1



LOAD BEARING WALL (SEE PLANNING GUIDE)

4 WALL ANCHOR POINTS MIN. PER BRACKET  
2 PER SIDE UP RAIL BRACKET CENTER LINE  
PULL OUT FORCE PER FASTENER 69 kN [15.5]