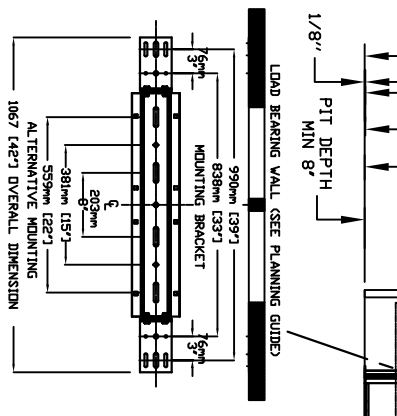
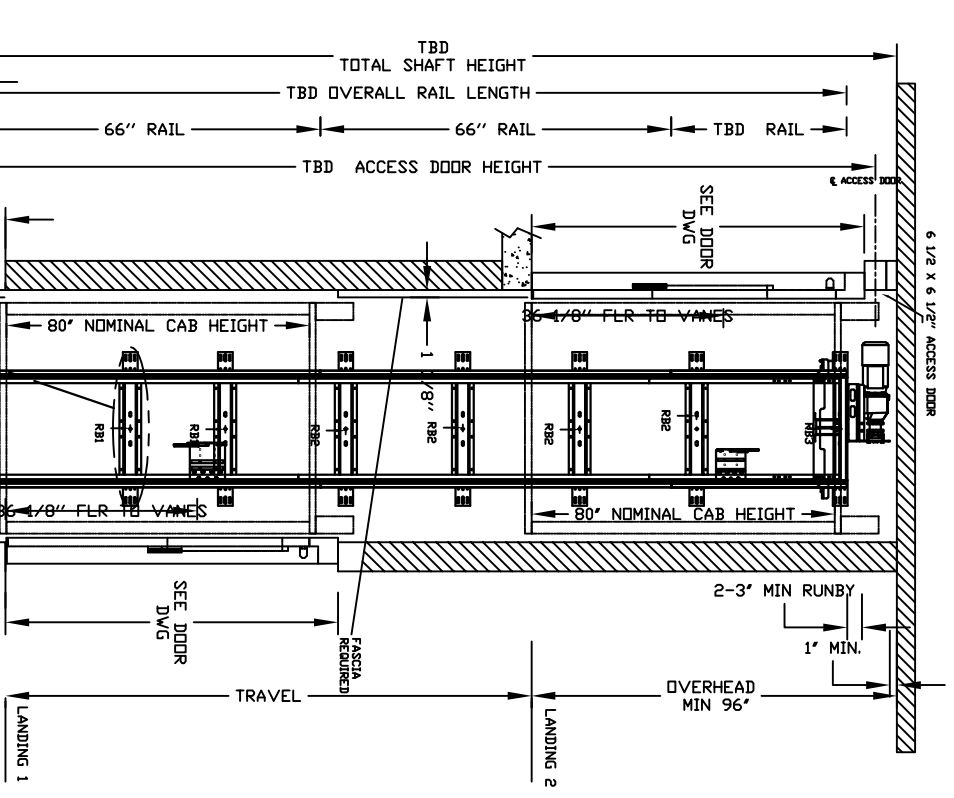


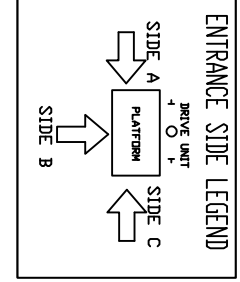
ECLIPSE BIFOLD Model TYPE 2



MOUNTING BRACKET
 4 WALL ANCHOR POINTS MIN. PER BRACKET
 2 PER SIDE OF RAIL BRACKET CENTER LINE
 PULL OUT FORCE PER FASTENER 69 Kg (152 LBS)

FINAL RAIL BRACKET RB3	BELOW THE MOTOR CONCORD REPRESENTATIVE LOCATION
INTERMEDIATE RAIL BRACKET RB2	32" (813mm) INTERVALS AFTER 2nd BOTTOM BRACKET
BOTTOM RAIL BRACKET RB1	39" (991mm) & 71" (1804mm) ABOVE PIT FLOOR

RAIL FORCES	
*R1	*R2
1382 kg [304 lbf]	882 kg [194 lbf]
RAIL ASST WEIGHT: 1150 lbs / 75	645 kg / 75
PIT FLOOR TO SUPPORT LOAD (INCLUDES IMPACT)	
2909 kg	
16400 lbf	



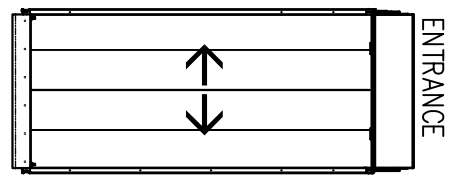
ALL INFORMATION IS SUBJECT TO CHANGE.
 PLEASE REFERENCE OUR ON-LINE DRAWINGS AT
WWW.SAVARIA.COM FOR THE MOST RECENT UPDATES

RESIDENTIAL ELEVATOR
 ECLIPSE BIFOLD TYPE 2-40" WIDTH

THE INFORMATION DISCLOSED HEREIN IS THE EXCLUSIVE PROPERTY OF **savaria**

AND MAY NOT BE USED BY OTHERS WITHOUT PRIOR WRITTEN CONSENT

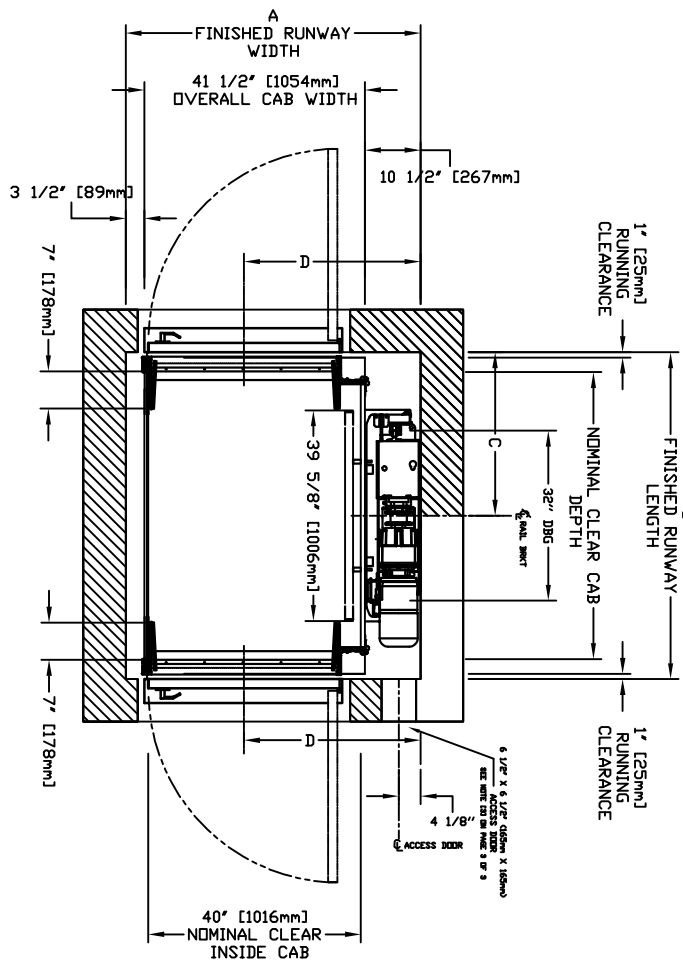
SHEET 1/1



ENTRANCE

CHARACTERISTICS

- CAB DOOR TYPE: AUTO BIFOLD DOORS
- ENTRANCE DOOR TYPE: SWING DOORS
- BIFOLD DOORS FINISH: PAINT OR STAINLESS STEEL
- FULLY AUTOMATIC OPERATION TO OPEN THE DOORS UPON ARRIVAL AT THE LANDING
- LIGHTWEIGHT ALUMINUM SILL
- FOR CAB LONGER THAN 54" EXTENSION PANELS WILL BE PROVIDED AT THE ENDS OF EACH WALLS



NOMINAL CLEAR INSIDE CAB WIDTH	NOMINAL CLEAR INSIDE CAB LENGTH	FINISHED RUNWAY WIDTH		FINISHED RUNWAY LENGTH		RAIL CENTER LINE		DOOR CENTER LINE			
		mm	Inches	mm	Inches	mm	Inches	mm	Inches		
1016	40	1219	48	1410	55 1/2	1410	55 1/2	705	27 3/4	845	33 1/4
1016	40	1372	54	1410	55 1/2	1562	61 1/2	781	30 3/4	845	33 1/4
1016	40	1499	59	1410	55 1/2	1689	66 1/2	845	33 1/4	845	33 1/4

DOCUMENT REVISION 000, DATE: 01/25/17