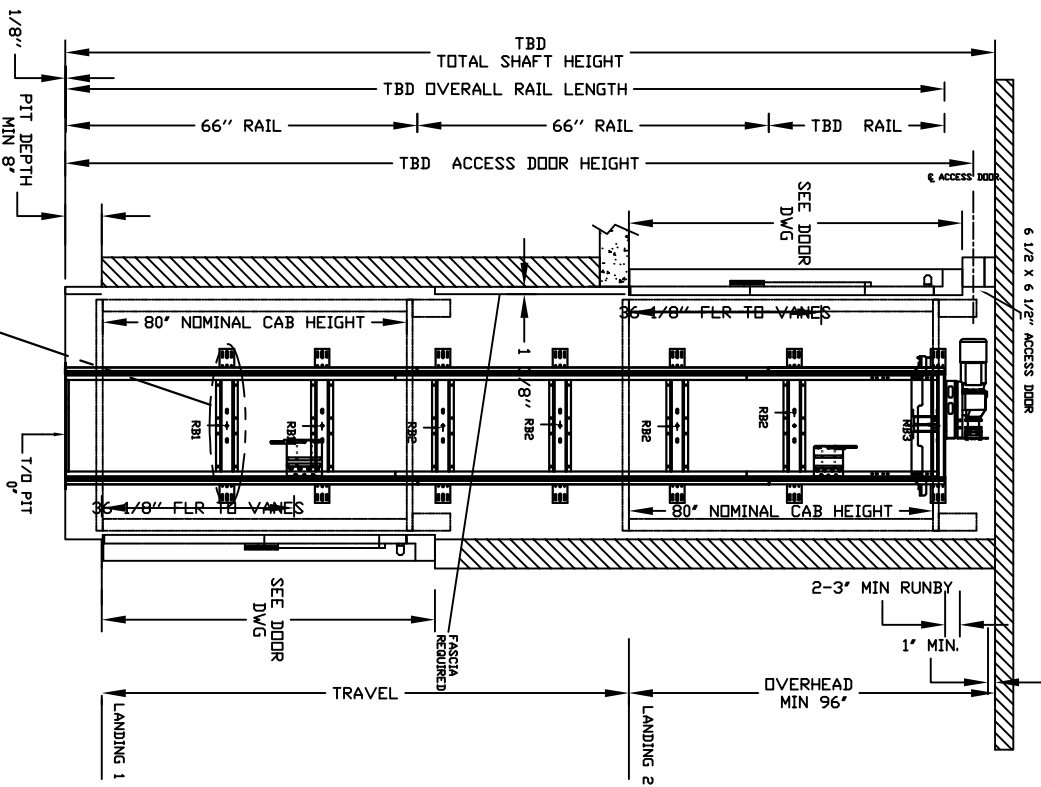
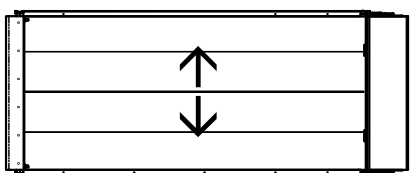


ECLIPSE BIFOLD Model TYPE 2

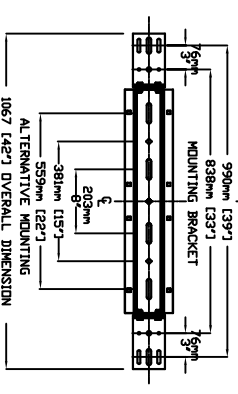
ENTRANCE

CHARACTERISTICS

CAB DOOR TYPE: AUTO BIFOLD DOORS
 ENTRANCE DOOR TYPE: SWING DOORS
 BIFOLD DOORS FINISH: PAINT OR STAINLESS STEEL
 FULLY AUTOMATIC OPERATION TO OPEN THE DOORS UPON ARRIVAL AT THE LANDING
 LIGHTWEIGHT ALUMINUM SILL
 FOR CAB LONGER THAN 54" EXTENSION PANELS
 WILL BE PROVIDED AT THE ENDS OF EACH WALLS



LOAD BEARING WALL (SEE PLANNING GUIDE)
 1/8" PIT DEPTH MIN 8"
 CANNOT HAVE HABITABLE SPACE BELOW PIT



4 WALL ANCHOR POINTS MIN. PER BRACKET
 2 PER SIDE UP RAIL BRACKET CENTER LINE
 PULL OUT FORCE PER FASTENER 69 kg (152 LBS)

FINAL RAIL BRACKET RBS3

BELOW THE MOTOR CONCORD REPRESENTATIVE FOR EXACT LOCATION

INTERMEDIATE RAIL BRACKET RB2

32" (813mm) INTERVALS AFTER 2nd BOTTOM BRACKET

BOTTOM RAIL BRACKET RB1

39" (991mm) & 7" (180mm) ABOVE PIT FLOOR

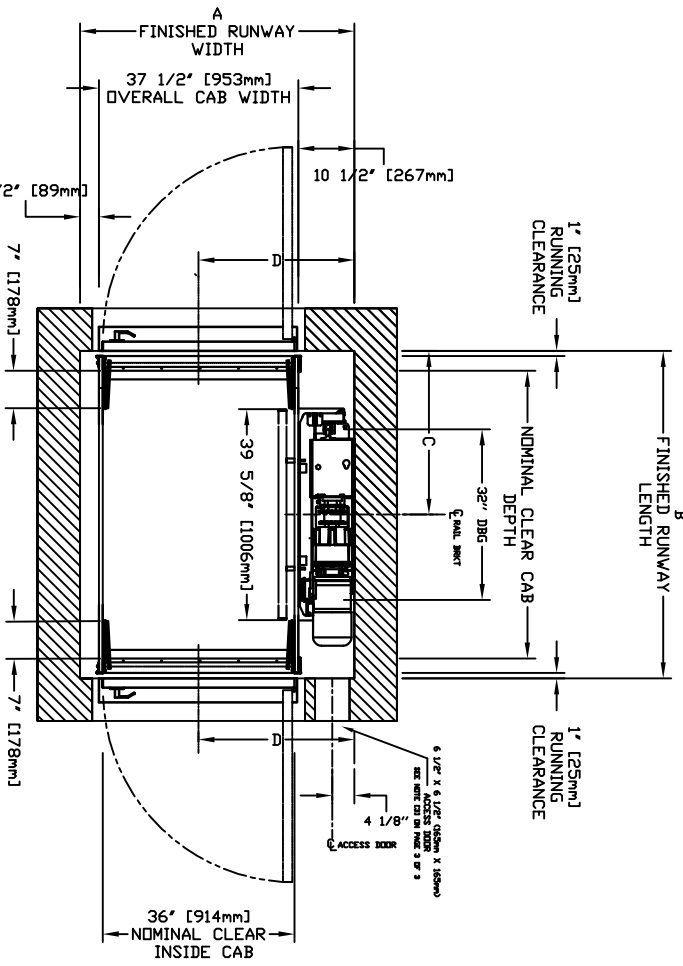
RAIL FORCES



* R1	* R2
1382 kg (3064 lb)	882 kg (1941 lb)
1650 kg (3638 lb)	1134 kg (2500 lb)
1850 kg (4080 lb)	1396 kg (3078 lb)

PIT FLOOR TO SUPPORT LOAD (INCLUDES IMPACT)

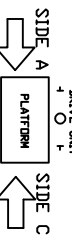
2909 kg (6400 lbs)	16400 (lb)
--------------------	------------



NOMINAL CLEAR INSIDE CAB WIDTH	NOMINAL CLEAR INSIDE CAB LENGTH	FINISHED RUNWAY WIDTH	FINISHED RUNWAY LENGTH	FINISHED RUNWAY LENGTH	C RAIL CENTER LINE	D DOOR CENTER LINE
mm	mm	mm	mm	mm	mm	mm
Inches	Inches	Inches	Inches	Inches	Inches	Inches
914	1219	48	1308	51 1/2	1410	55 1/2
36	48	1308	51 1/2	1410	705	27 3/4
36	1372	54	1308	51 1/2	1410	705
36	1489	59	1308	51 1/2	1489	59 1/2
36	1489	59	1308	51 1/2	1689	66 1/2
36	1489	59	1308	51 1/2	845	33 1/4
36	1489	59	1308	51 1/2	845	33 1/4

DOCUMENT REVISION 000, DATE: 01/25/17

ENTRANCE SIDE LEGEND



RESIDENTIAL ELEVATOR

ECLIPSE BIFOLD TYPE 2-36" WIDTH

ALL INFORMATION IS SUBJECT TO CHANGE.
 PLEASE REFERENCE OUR ON-LINE DRAWINGS AT
[WWW.SAVARIA.COM](http://www.savaria.com) FOR THE MOST RECENT UPDATES



THE INFORMATION DISCLOSED HEREIN IS THE EXCLUSIVE PROPERTY OF SAVARIA