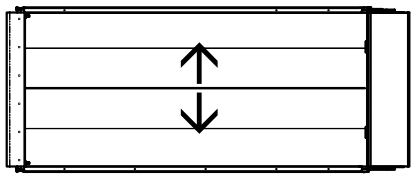
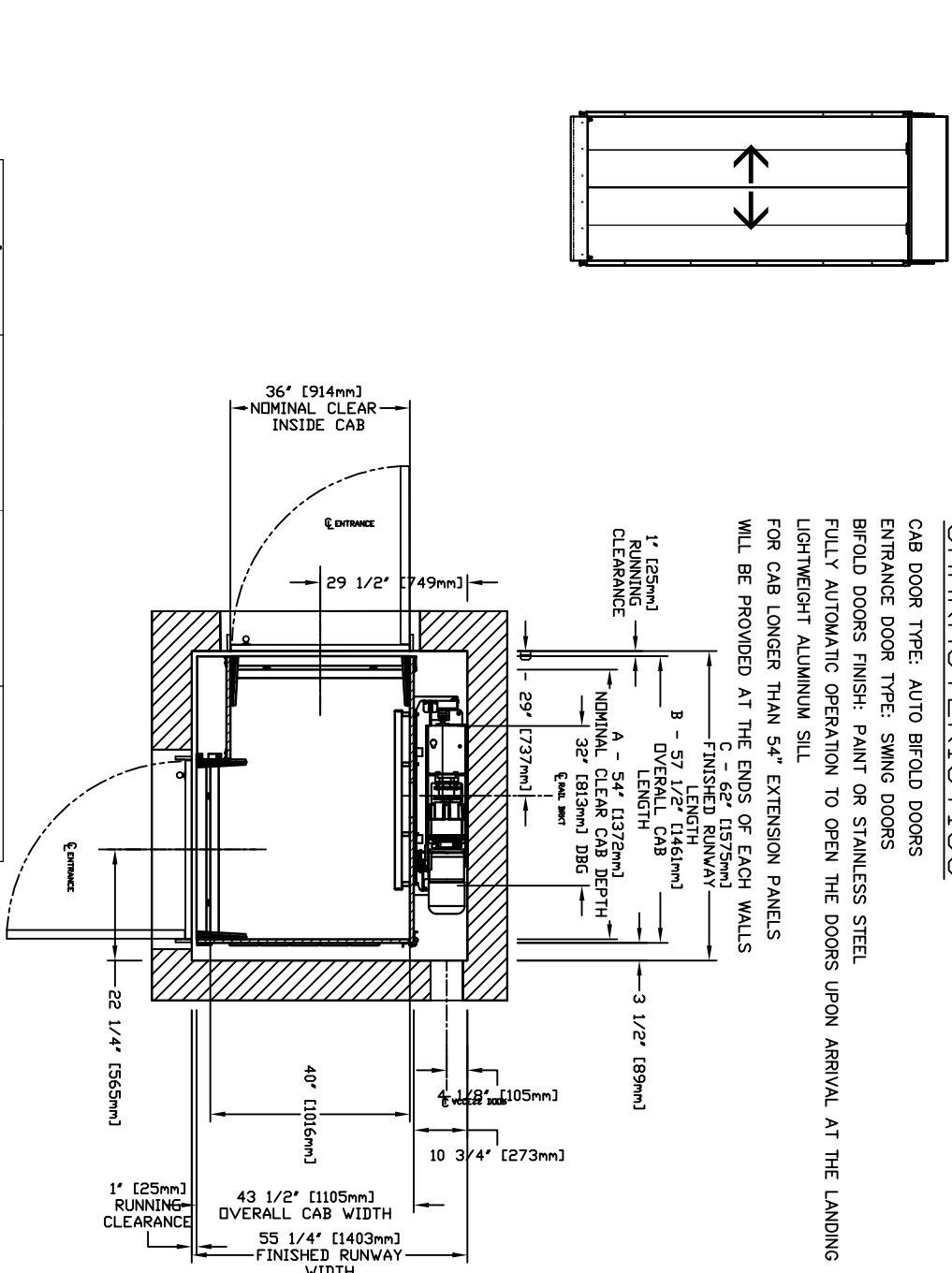
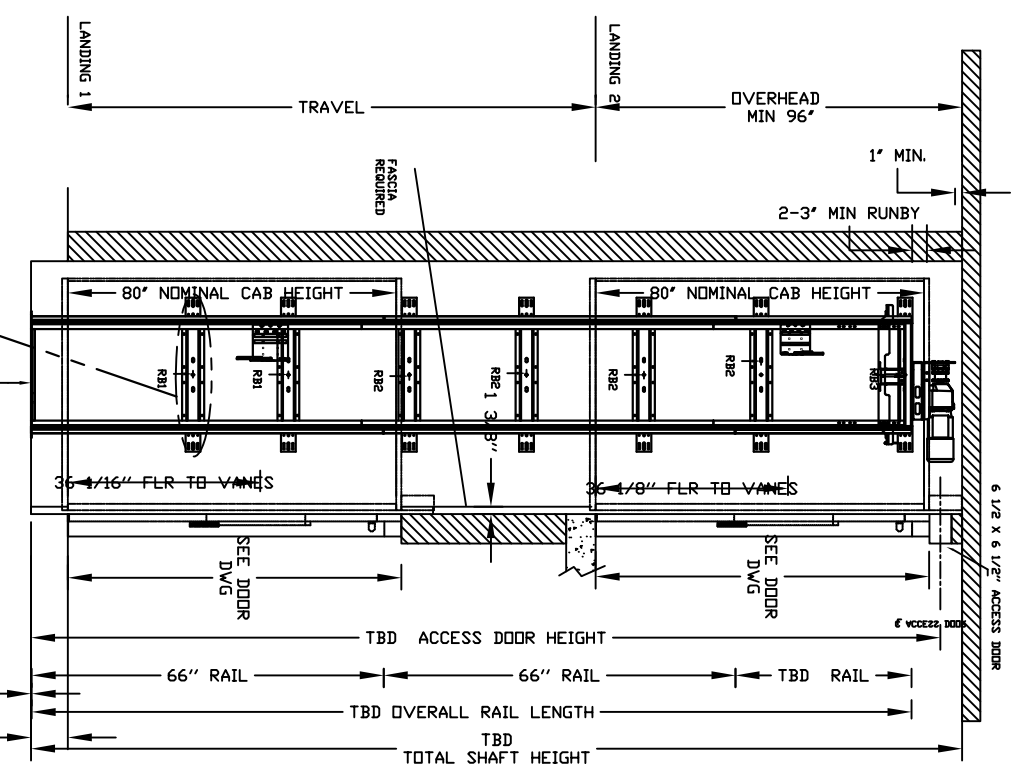


ENTRANCE

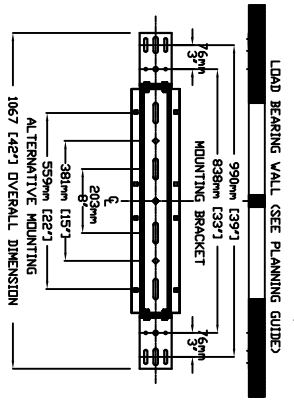


CHARACTERISTICS

CAB DOOR TYPE: AUTO BIFOLD DOORS
 ENTRANCE DOOR TYPE: SWING DOORS
 BIFOLD DOORS FINISH: PAINT OR STAINLESS STEEL
 FULLY AUTOMATIC OPERATION TO OPEN THE DOORS UPON ARRIVAL AT THE LANDING
 LIGHTWEIGHT ALUMINUM SILL
 FOR CAB LONGER THAN 54" EXTENSION PANELS
 WILL BE PROVIDED AT THE ENDS OF EACH WALLS
 C - 62" [1575mm]
 FINISHED RUNWAY LENGTH
 B - 57 1/2" [1461mm]
 OVERALL CAB LENGTH
 A - 54" [1372mm]
 NOMINAL CLEAR CAB DEPTH
 32" [813mm] DBG
 1' [25mm] RUNNING CLEARANCE
 29 1/2" [749mm] ENTRANCE



CANNOT HAVE HABITABLE SPACE BELOW PIT



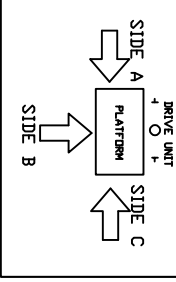
LOAD BEARING WALL (SEE PLANNING GUIDE)
 MOUNTING BRACKET
 4 WALL ANCHOR POINTS MIN PER BRACKET
 2 PER SIDE UP RAIL BRACKET CENTER LINE
 PULL OUT FORCE PER FASTENER 69 kg [152 LBS]

BOTTOM RAIL BRACKET RB1	BELOW THE MOTOR CONSULT YOUR REPRESENTATIVE FOR EXACT LOCATION RB3
INTERMEDIATE RAIL BRACKET RB2	32" [813mm] INTERVALS AFTER 2nd BOTTOM BRACKET
FINAL RAIL BRACKET RB3	39" [991mm] & 7" [180mm] ABOVE PIT FLOOR

RAIL FORCES	
*R1	*R2
1382 kg [304 lbf]	882 kg [194 lbf]
RAIL ASSY WEIGHT: 1880 lbs / 713	245 kg / 540
PIT FLOOR TO SUPPORT & LOAD (INCLUDES IMPACT) 2909 kg [6400 lbf]	

A NOMINAL CLEAR INSIDE CAB LENGTH	B OVERALL CAB LENGTH	C FINISHED RUNWAY LENGTH	D RAIL CENTER LINE	
			mm	inches
1219 mm	1308 mm	1422 mm	660 mm	26 inches
48 inches	51 1/2 inches	56 inches	737 mm	29 inches
1372 mm	1461 mm	1575 mm	737 mm	29 inches
54 inches	57 1/2 inches	62 inches	864 mm	34 inches
1524 mm	1613 mm	1727 mm		

ENTRANCE SIDE LEGEND



RESIDENTIAL ELEVATOR
 ECLIPSE BIFOLD TYPE 4

DOCUMENT REVISION 000, DATE: 06/25/20

ALL INFORMATION IS SUBJECT TO CHANGE.
 PLEASE REFERENCE OUR ON-LINE DRAWINGS AT
 WWW.SAVARIA.COM FOR THE MOST RECENT UPDATES