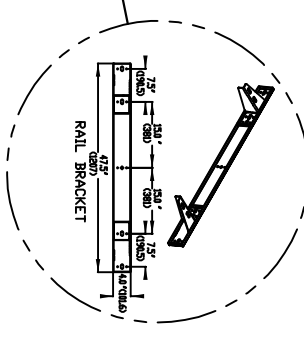
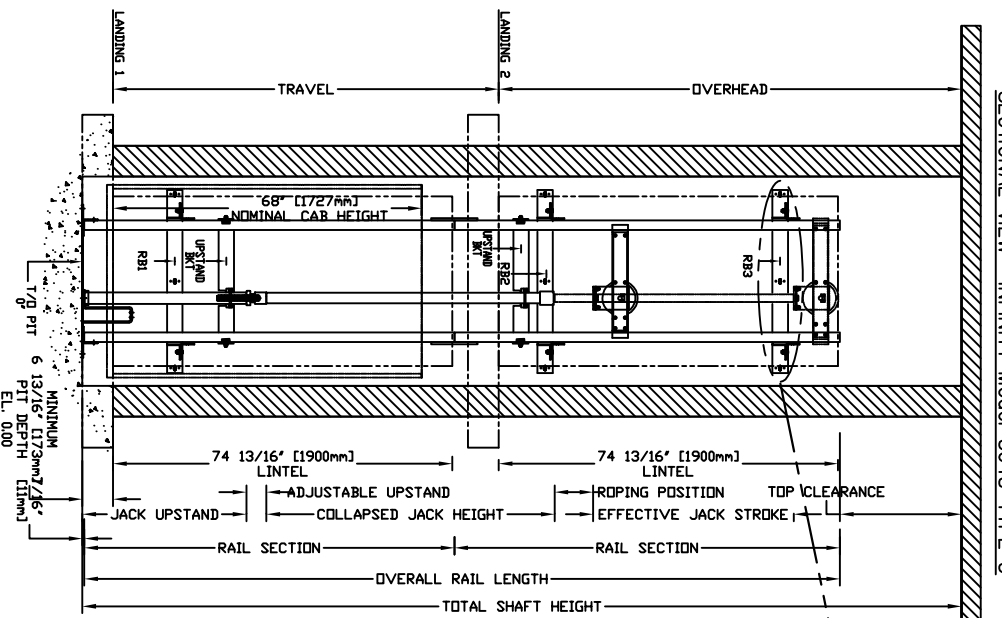
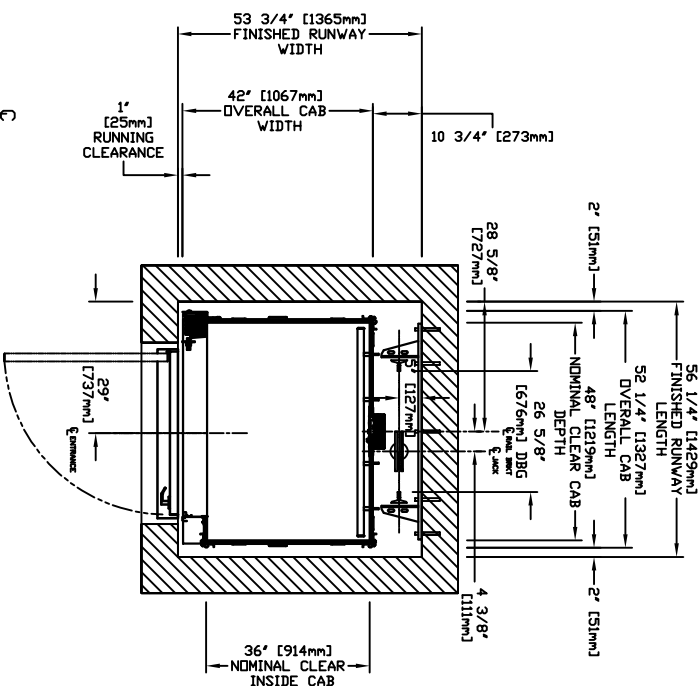


SECTIONAL VIEW - INFINITY Model 3648 TYPE 5

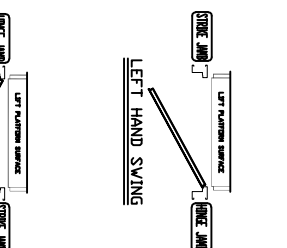
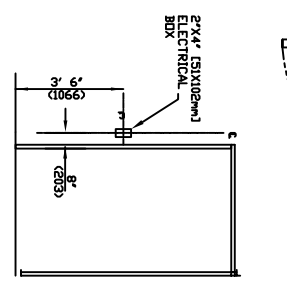
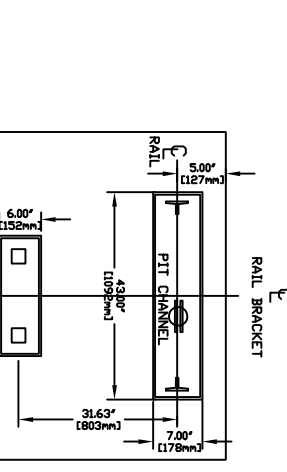


RAIL FORCES		R3 NOTE:	
* R1	* R2	PIT FLOOR TO SUPPORT LOAD OF:	
30klbf	19klbf	5klbks * (INCLUDES IMPACT)	
RAIL WEIGHT: 80 lbs / ft		FOR TOTAL RAIL-OUT FORCE ON RAIL BRACKET, IT MUST BE SECURED TO 50klbf.	

PLAN VIEW - INFINITY Model 3648 TYPE 5



TOP RAIL BRACKET	AT TOP OF CONSTANT CONCORD REPRESENTATIVE FOR EXACT LOCATION	FLOOR No.	FLOOR HEIGHT
RB3			
INTERMEDIATE RAIL BRACKET	96" (2439mm) INTERVALS ABOVE BOTTOM BRACKET		
RB2			
BOTTOM RAIL BRACKET	24" (610mm) ABOVE PIT FLOOR		
RB1			
TOTAL RISE			



**\*GENERAL**  
 HOISTWAY - THE HOISTWAY MUST BE IN ACCORDANCE WITH "SAFETY CODE FOR ELEVATORS" (944 SECTION 5.3), "SAFETY CODE FOR ELEVATORS AND ESCALATORS" (ASME A17.1) AND ALL STATE/PROVINCIAL AND LOCAL CODES.  
 PLUMB HOISTWAY - DUE TO CLOSE RUNNING CLEARANCES OWNER/AGENT MUST ENSURE THAT HOISTWAY AND PIT (WHERE PROVIDED) ARE LEVEL, PLUMB AND SQUARE AND ARE IN ACCORDANCE WITH THE DIMENSIONS ON THESE DRAWINGS.  
 MINIMUM OVERHEAD CLEARANCE - OWNER/AGENT MUST ENSURE MINIMUM OVERHEAD CLEARANCE IS IN COMPLIANCE WITH CODES.  
 CONSTRUCTION SITE - OWNER/AGENT TO PROVIDE ALL MASONRY, CARPENTRY AND DRYWALL WORK AS REQUIRED AND SHALL PATCH AND MAKE GOOD (INCLUDING FINISH PAINTING) ALL AREAS WHERE WALLS/FLOORS MAY REQUIRE TO BE CUT, DRILLED OR ALTERED IN ANY WAY TO PERMIT THE PROPER INSTALLATION OF THE LIFT.  
 DIMENSIONS - CONTRACTOR/CUSTOMER TO VERIFY ALL DIMENSIONS AND REPORT ANY DISCREPANCIES TO OUR OFFICE IMMEDIATELY.  
**\*STRUCTURAL**  
 ELOOR/SUPPORT WALL LOADS - STRUCTURAL ENGINEER TO ASSURE THAT BUILDING AND SHAFTH WALL SAFETY SUPPORT ALL LOADS IMPROSED BY THE LIFT EQUIPMENT REFER TO THE TABLES ON THIS DRAWING FOR LOADS IMPROSED BY THE EQUIPMENT.  
 WHERE DOORS ARE REQUIRED - SUITABLE LINTELS MUST BE PROVIDED BY OWNER/AGENT. DOOR FRAMES ARE NOT DESIGNED TO SUPPORT DIVERSED WALL LOADS.  
**\*MACHINE ROOM**  
 LOCATION / ACCESS - MACHINE ROOM LOCATED AT THE LOWEST LEVEL ADJACENT TO HOISTWAY, UNLESS SHOWN OTHERWISE ON THE LAYOUT DRAWINGS. FIELD ADJUSTMENT BY INSTALLER MAY BE NECESSARY TO MEET JOB SITE CONDITIONS OR REGULATIONS. ACCESS TO MACHINE ROOM TO BE THROUGH A SELF CLOSING LOCKING DOOR. SLEEVES FOR OIL & ELECTRIC LINES - FROM MACHINE ROOM TO RUNWAY AS REQUIRED. POSITION PER INSTALLER'S INSTRUCTIONS.

INPUT VOLTAGE (V/PH/CT/CL)	DISCONNECT SIZE (AMPS)	TIME DELAY (SECS)	FULL LOAD FUSE (AMPS)	CURRENT (AMPS)
208/3PH/60HTZ	30	20	10.6	
230/1PH/60HTZ	60	30	17.0	
CAB LIGHTS	15/1PH		15	

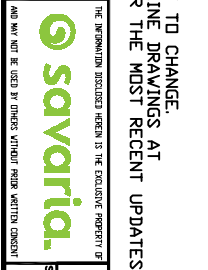
PIT / OVERHEAD REQUIREMENTS			
MAX SPEED (ft/min)	MIN PIT	TOTAL TRAVEL	MINIMUM OVERHEAD
36	8" ***	92" (2337)	

\*\*\* NOTE: Additional pit equipment required when over 36" [914.4mm] deep, consult your local dealer for details

RESIDENTIAL ELEVATOR INFINITY MODEL 3648 TYPE 5

CUSTOMER:	PROJECT:	DATE:
LOCATION:	COMPLETED BY:	REVISION DATE:

**NOTE A**  
 ALL INFORMATION IS SUBJECT TO CHANGE. PLEASE REFERENCE OUR ON-LINE DRAWINGS AT WWW.CONCORDRELEVATOR.COM FOR THE MOST RECENT UPDATES



PROVISIONS BY OTHERS