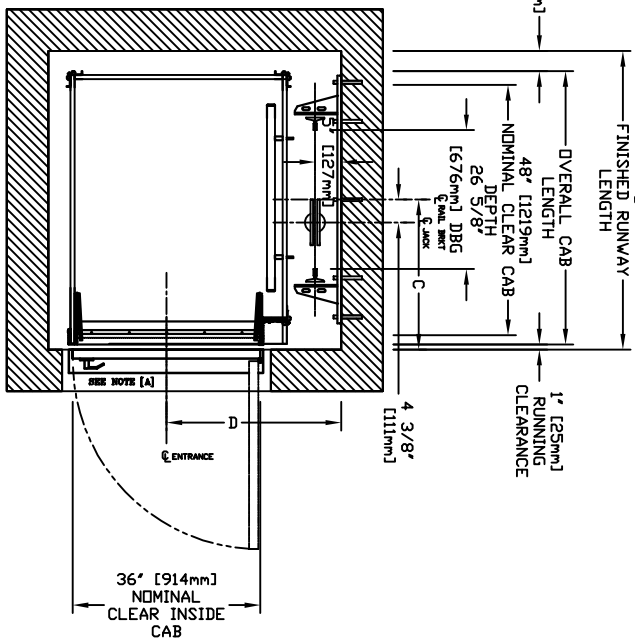
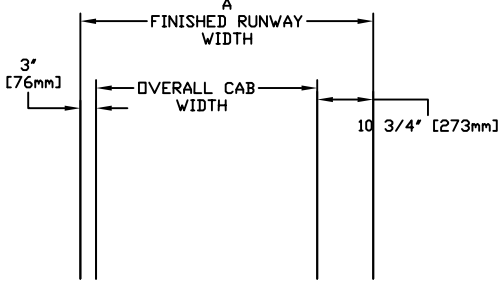
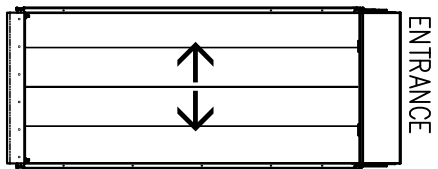
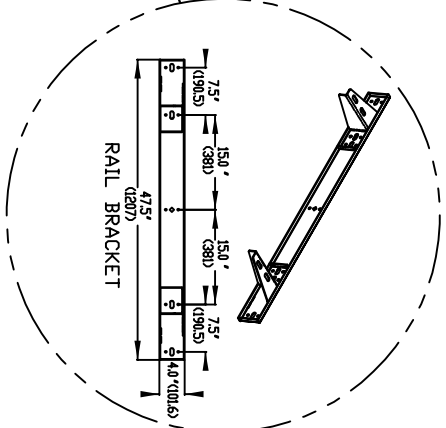
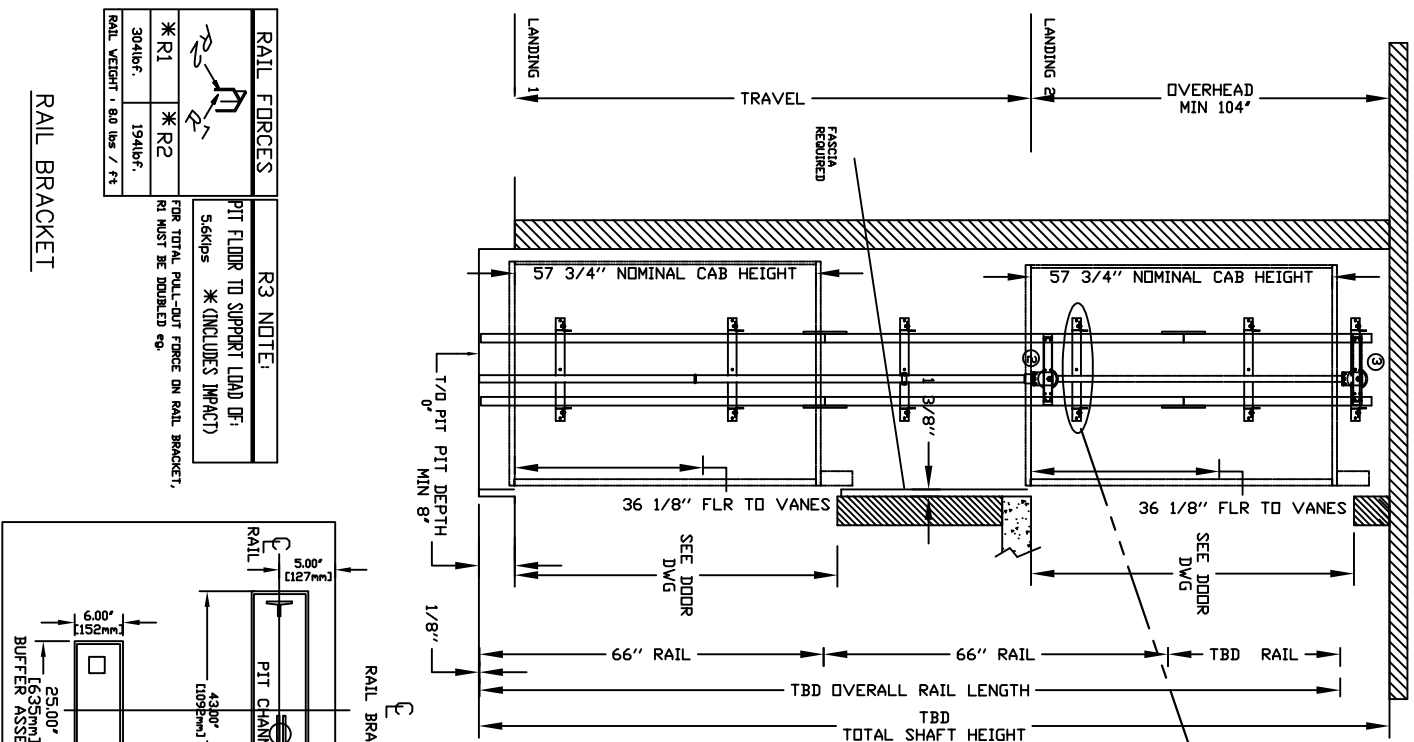


CHARACTERISTICS

- CAB DOOR TYPE: AUTO SLIM 2 SPEED DOORS
- ENTRANCE DOOR TYPE: AUTO SLIM 2 SPEED DOORS
- 2 SPEED DOORS FINISH: PAINT OR STAINLESS STEEL
- FULLY AUTOMATIC OPERATION TO OPEN THE DOORS UPON ARRIVAL AT THE LANDING
- LIGHTWEIGHT ALUMINUM SILL
- EMERGENCY BACK-UP BATTERY SYSTEM
- INFRARED DETECTION SYSTEM TO RETRACT DOORS BEFORE HITTING AN OBSTRUCTION



NOMINAL CLEAR INSIDE CAB WIDTH	NOMINAL CLEAR INSIDE CAB LENGTH	A		B		C		D	
		FINISHED RUNWAY WIDTH	FINISHED RUNWAY LENGTH	FINISHED RUNWAY LENGTH	FINISHED RUNWAY LENGTH	RAIL CENTER LINE	DOOR CENTER LINE	RAIL CENTER LINE	DOOR CENTER LINE
mm	Inches	mm	Inches	mm	Inches	mm	Inches	mm	Inches
1016	40	1219	48	1426	56 1/8	1454	57 1/4	730	28 3/4
1016	40	1372	54	1426	56 1/8	1607	63 1/4	806	31 3/4
1016	40	1524	60	1426	56 1/8	1759	69 1/4	883	34 3/4
								883	34 3/4
								851	33 1/2

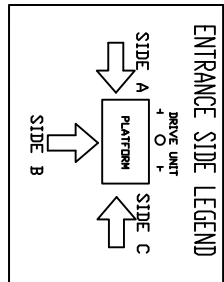
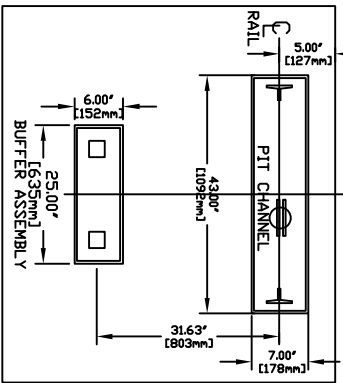
DOCUMENT REVISION 001, DATE: 06/14/17

RESIDENTIAL ELEVATOR
INFINITY BIFOLD DOORS TYPE 1R-40

RAIL FORCES

R3 NOTE:
PIT FLOOR TO SUPPORT LOAD IS:
5skips * (INCLUDES IMPACT)
FOR TOTAL PULL-OUT FORCE ON RAIL BRACKET,
R1 MUST BE DOUBLED *.

*R1	*R2
304Lbf.	194Lbf.
RAIL WEIGHT: 80 lbs / ft	



ALL INFORMATION IS SUBJECT TO CHANGE.
PLEASE REFERENCE OUR ON-LINE DRAWINGS AT
WWW.SAVARIA.COM FOR THE MOST RECENT UPDATES