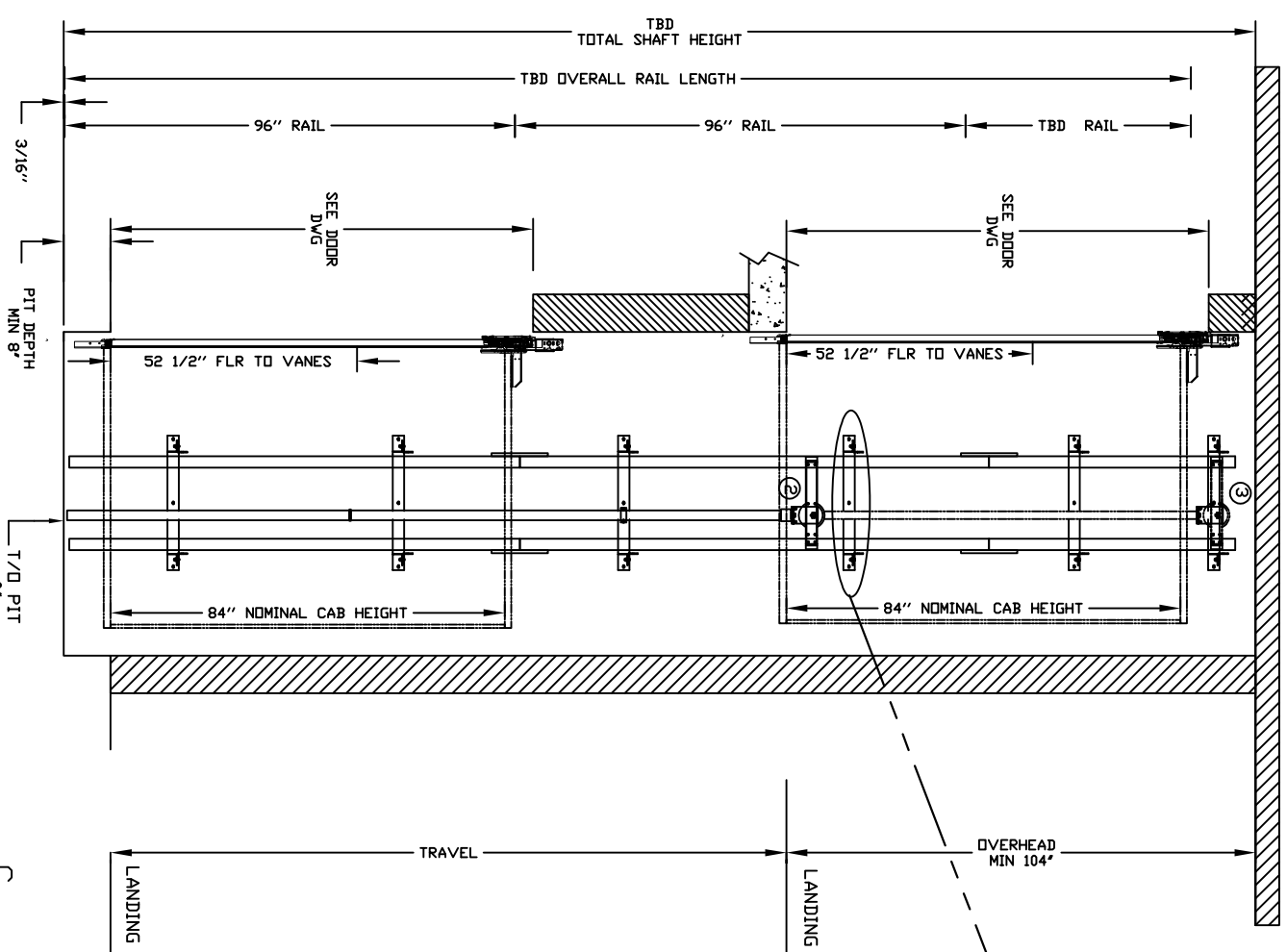
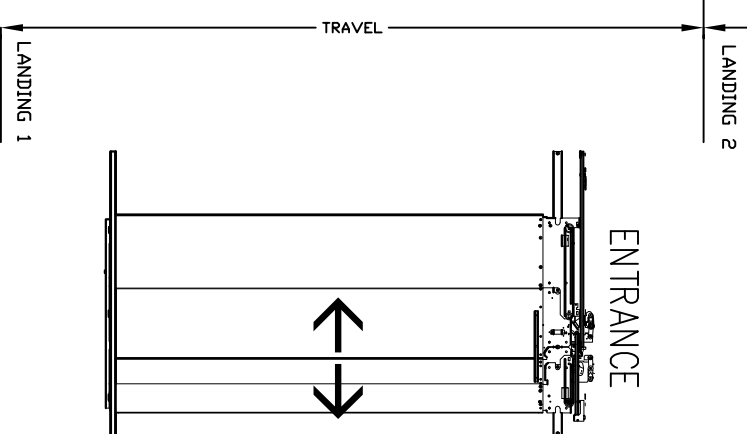
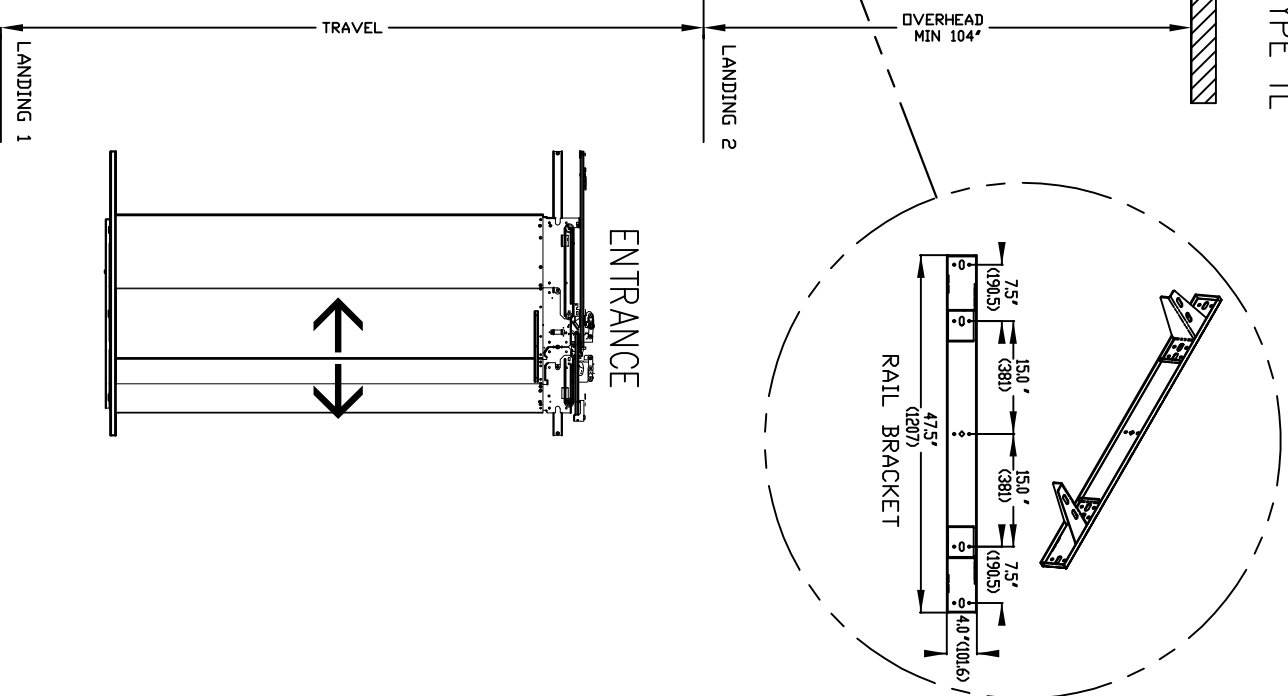
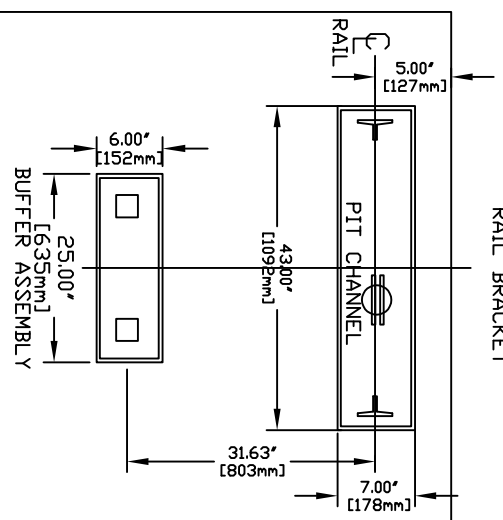


# INFINITY AUTO SLIM DOORS W Swing Door Model TYPE 1L



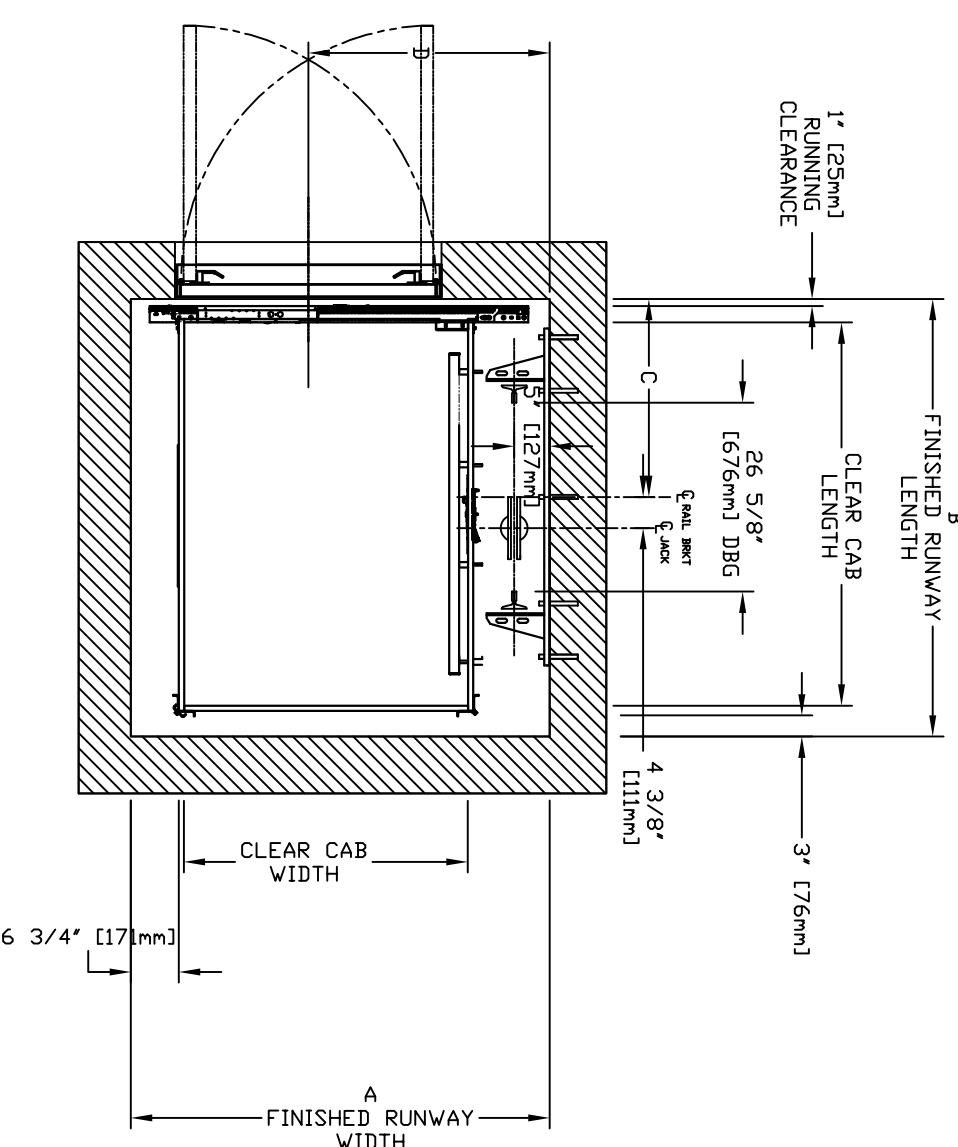
RAIL FORCES		R3 NOTE:	
*R1	*R2	PIT FLOOR TO SUPPORT LOAD OF: 56kips * (INCLUDES IMPACT)	
3041bf.	1941bf.	FOR TOTAL PULL-OUT FORCE ON RAIL BRACKET, R1 MUST BE DOUBLED eg.	

## RAIL BRACKET



## CHARACTERISTICS

- CAB DOOR TYPE: AUTO SLIM 2 SPEED DOORS
- ENTRANCE DOOR TYPE: AUTO SLIM 2 SPEED DOORS
- 2 SPEED DOORS FINISH: PAINT OR STAINLESS STEEL
- FULLY AUTOMATIC OPERATION TO OPEN THE DOORS UPON ARRIVAL AT THE LANDING
- LIGHTWEIGHT ALUMINIUM SILL
- EMERGENCY BACK-UP BATTERY SYSTEM
- INFRARED DETECTION SYSTEM TO RETRACT DOORS BEFORE HITTING AN OBSTRUCTION

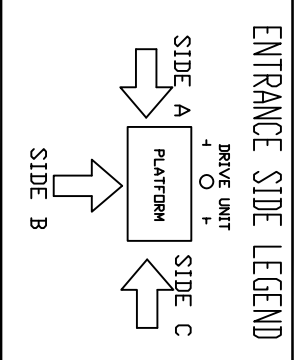


mm	Inches	mm	Inches	A		B		C		D	
				FINISHED RUNWAY WIDTH	FINISHED RUNWAY LENGTH	FINISHED RUNWAY WIDTH	FINISHED RUNWAY LENGTH	RAIL CENTER LINE	DOOR CENTER LINE		
914	36	1219	48	1499	59	1397	55	692	27 1/4	838	33
914	36	1372	54	1499	59	1549	61	768	30 1/4	838	33
914	36	1524	60	1499	59	1702	67	845	33 1/4	838	33
1016	40	1372	54	1524	60	1549	61	768	30 1/4	864	34
1219	48	1524	60	1626	64	1702	67	845	33 1/4	864	34

DOCUMENT REVISION 002, DATE: 09/04/18

## RESIDENTIAL ELEVATOR

## INFINITY SLIMS DOORS W Swing Door TYPE 1L



ALL INFORMATION IS SUBJECT TO CHANGE.  
PLEASE REFERENCE OUR ON-LINE DRAWINGS AT  
WWW.SAVARIA.COM FOR THE MOST RECENT UPDATES

