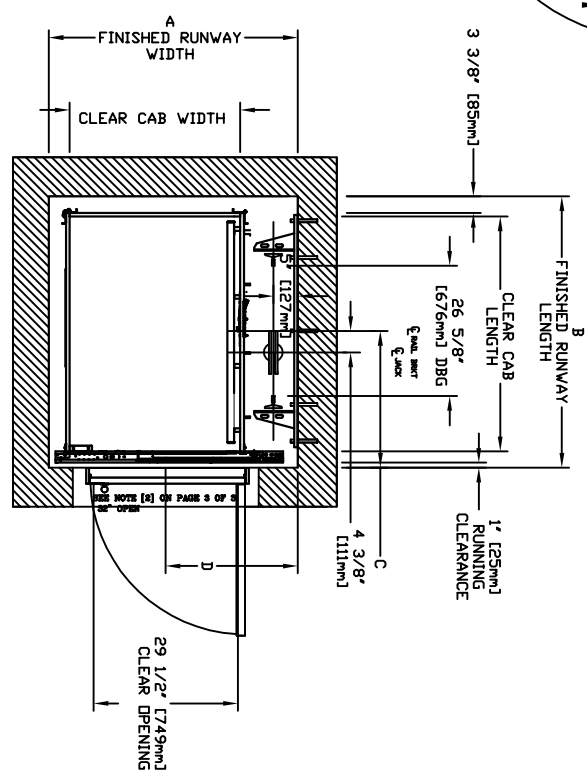
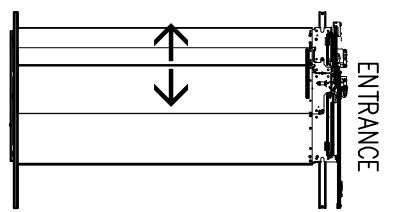
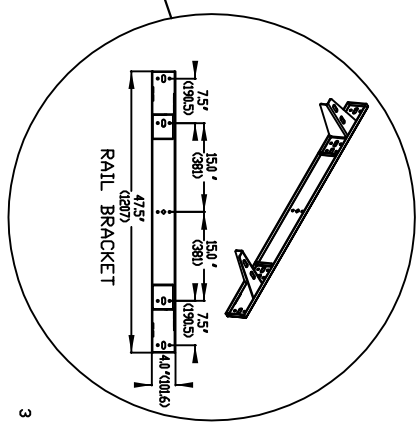
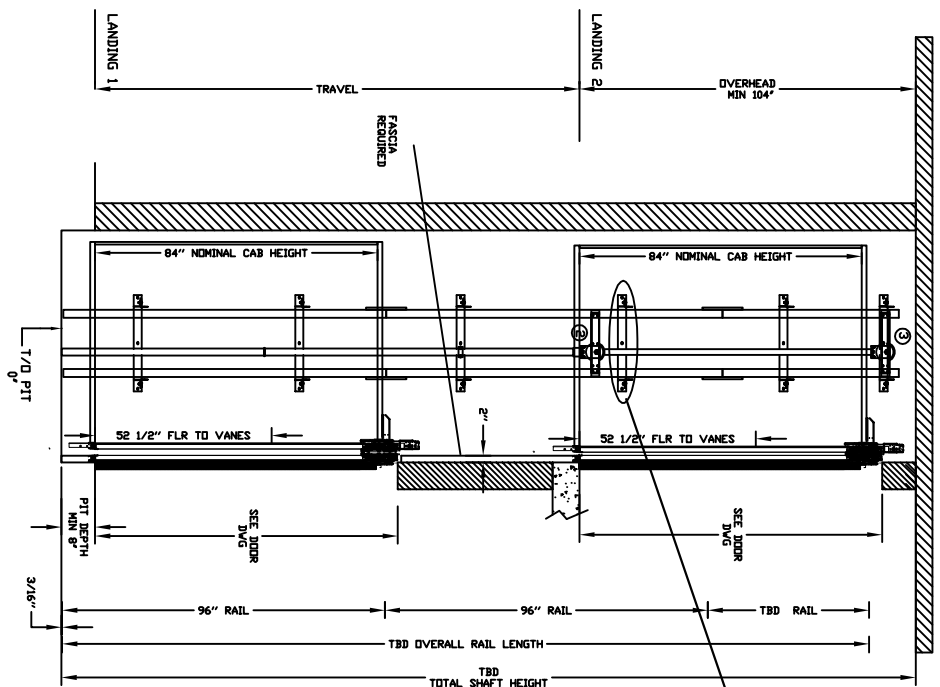


# INFINITY AUTO SLIM DOORS Model TYPE 1R-29 1/2"-SWING

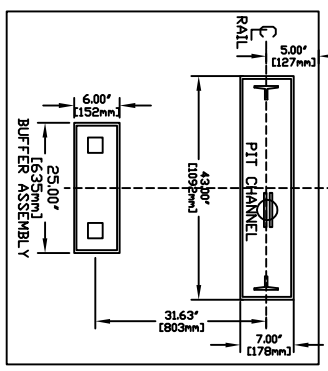


CLEAR INSIDE CAB WIDTH	CLEAR INSIDE CAB LENGTH	A		B		C		D	
		FINISHED RUNWAY WIDTH	FINISHED RUNWAY LENGTH	FINISHED RUNWAY LENGTH	CENTER LINE	RAIL CENTER LINE	DOOR CENTER LINE		
mm	mm	mm	mm	mm	mm	mm	mm	mm	mm
Inches	Inches	Inches	Inches	Inches	Inches	Inches	Inches	Inches	Inches
886	1219	48	1292	50 7/8	1408	55 7/16	710	27 15/16	686
886	1372	54	1292	50 7/8	1561	61 7/16	760	29 15/16	686
886	1524	60	1292	50 7/8	1713	67 7/16	837	32 15/16	686

DOCUMENT REVISION 001, DATE: 03/28/17



RAIL FORCES		R3 NOTE:	
* R1	* R2	PIT FLOOR TO SUPPORT LOAD OF:	* (INCLUDES IMPACT)
304Lbf.	194Lbf.	5/8kips	
FOR TOTAL RAIL-BUT FORCE ON RAIL BRACKET, R1 MUST BE DOUBLED UP.			
RAIL WEIGHT: 60 lbs / ft			



## CHARACTERISTICS

- CAB DOOR TYPE: AUTO SLIM 2 SPEED DOORS
- ENTRANCE DOOR TYPE: AUTO SLIM 2 SPEED DOORS
- 2 SPEED DOORS FINISH: PAINT OR STAINLESS STEEL
- FULLY AUTOMATIC OPERATION TO OPEN THE DOORS UPON ARRIVAL AT THE LANDING
- LIGHTWEIGHT ALUMINUM SILL
- EMERGENCY BACK-UP BATTERY SYSTEM
- INFRARED DETECTION SYSTEM TO RETRACT DOORS BEFORE HITTING AN OBSTRUCTION

## RESIDENTIAL ELEVATOR

### INFINITY SLIMS DOORS TYPE 1R-29 1/2"-SWING

ALL INFORMATION IS SUBJECT TO CHANGE. PLEASE REFERENCE OUR ON-LINE DRAWINGS AT WWW.SAVARIA.COM FOR THE MOST RECENT UPDATES



THE INFORMATION DISCLOSED HEREIN IS THE EXCLUSIVE PROPERTY OF SAVARIA AND MAY NOT BE USED BY OTHERS WITHOUT PRIOR WRITTEN CONSENT