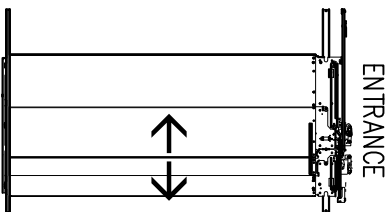
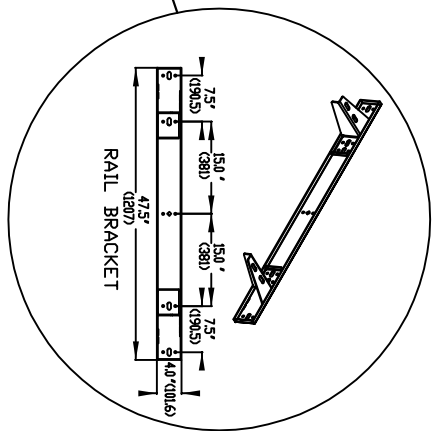
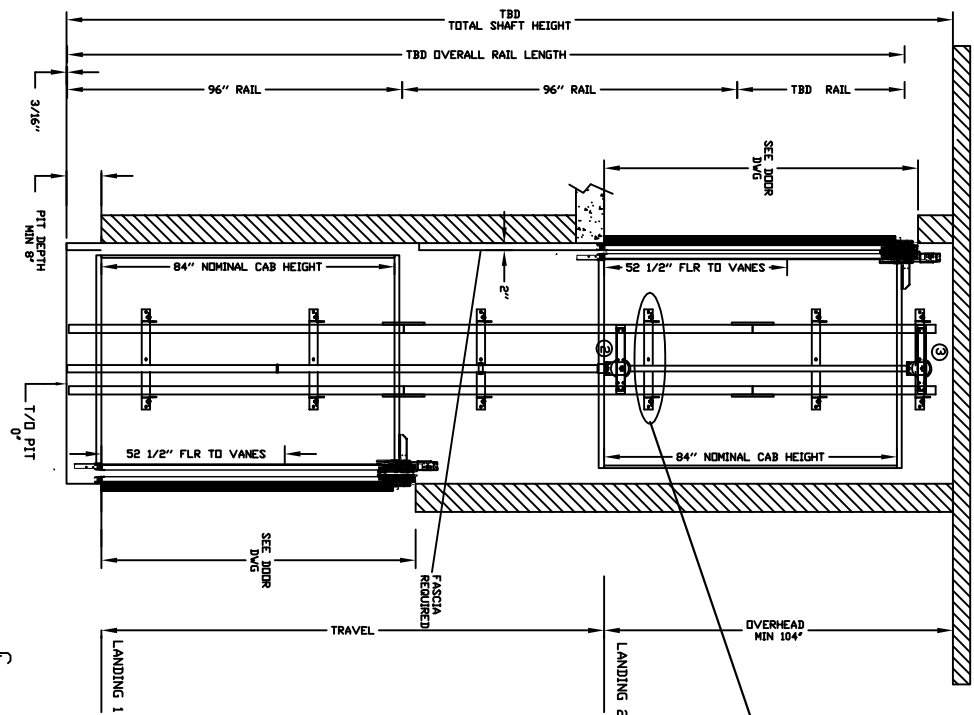
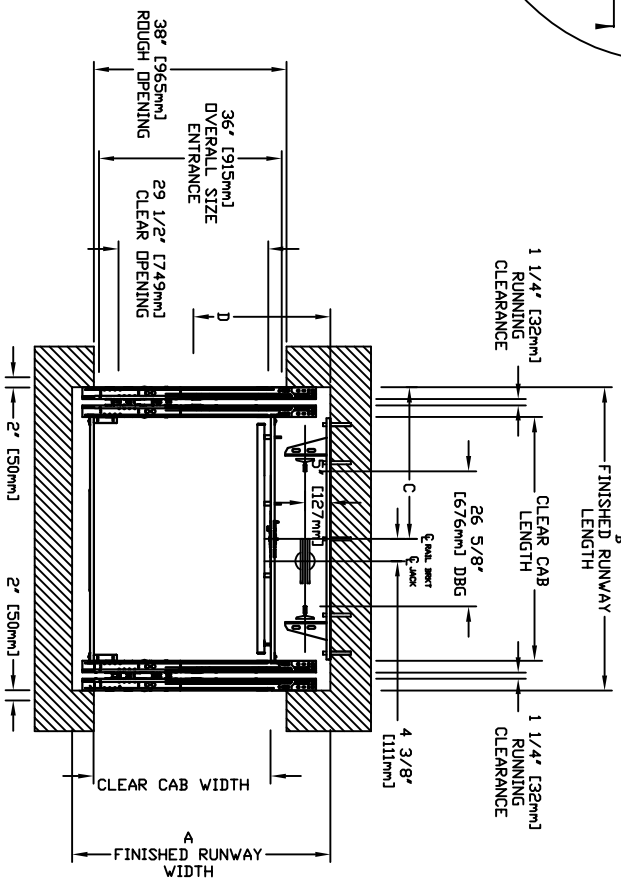


INFINITY AUTO SLIM DOORS Model TYPE 2-29 1/2"-SLIM



- CHARACTERISTICS**
- CAB DOOR TYPE: AUTO SLIM 2 SPEED DOORS
  - ENTRANCE DOOR TYPE: AUTO SLIM 2 SPEED DOORS
  - 2 SPEED DOORS FINISH: PAINT OR STAINLESS STEEL
  - FULLY AUTOMATIC OPERATION TO OPEN THE DOORS UPON ARRIVAL AT THE LANDING
  - LIGHTWEIGHT ALUMINUM SILL
  - EMERGENCY BACK-UP BATTERY SYSTEM
  - INFRARED DETECTION SYSTEM TO RETRACT DOORS BEFORE HITTING AN OBSTRUCTION

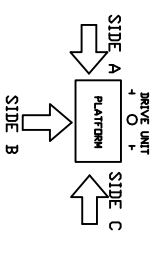


CLEAR INSIDE CAB WIDTH	CLEAR INSIDE CAB LENGTH	A FINISHED RUNWAY WIDTH		B FINISHED RUNWAY LENGTH		C RAIL CENTER LINE		D DOOR CENTER LINE	
		mm	Inches	mm	Inches	mm	Inches	mm	Inches
886	34 7/8	1219	48	1292	50 7/8	1518	59 3/4	759	29 7/8
886	34 7/8	1372	54	1292	50 7/8	1670	65 3/4	835	32 7/8
886	34 7/8	1524	60	1292	50 7/8	1822	71 3/4	911	35 7/8

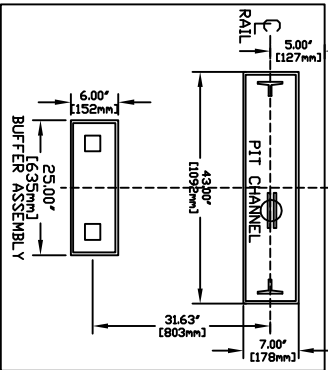
DOCUMENT REVISION 001, DATE: 03/28/17

RESIDENTIAL ELEVATOR  
INFINITY SLIMS DOORS TYPE 2-29 1/2"-SLIM

ENTRANCE SIDE LEGEND



RAIL FORCES		R3 NOTE:	
* R1	* R2	PT FLOOR TO SUPPORT LOAD DT:	
304lbf.	194lbf.	5skips * (INCLUDES IMPACT)	
RAIL WEIGHT = 80 lbs / ft		FOR TOTAL PULL-OUT FORCE ON RAIL BRACKET, RT MUST BE DOUBLED ☞	



ALL INFORMATION IS SUBJECT TO CHANGE.  
PLEASE REFERENCE OUR ON-LINE DRAWINGS AT  
WWW.SAVARIA.COM FOR THE MOST RECENT UPDATES

