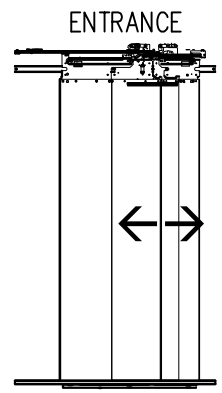
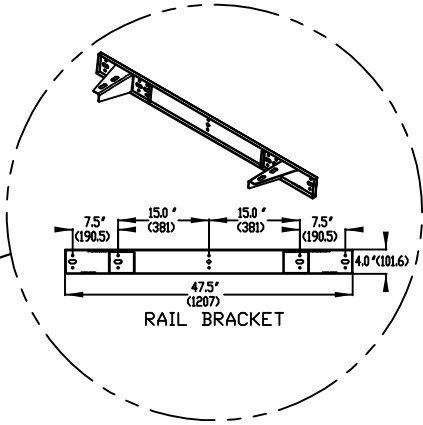
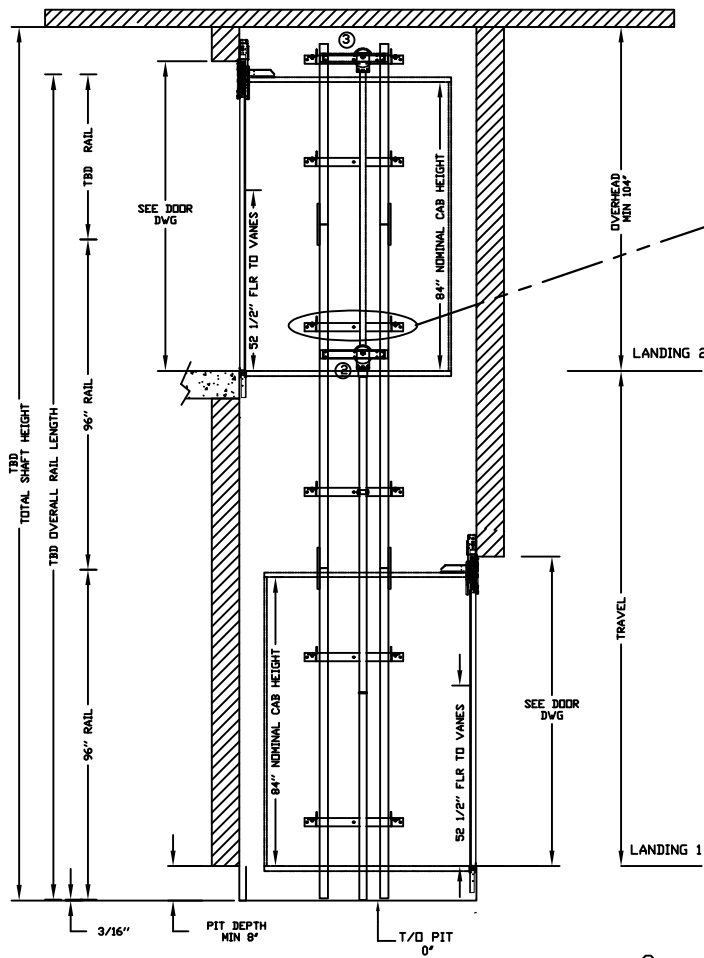
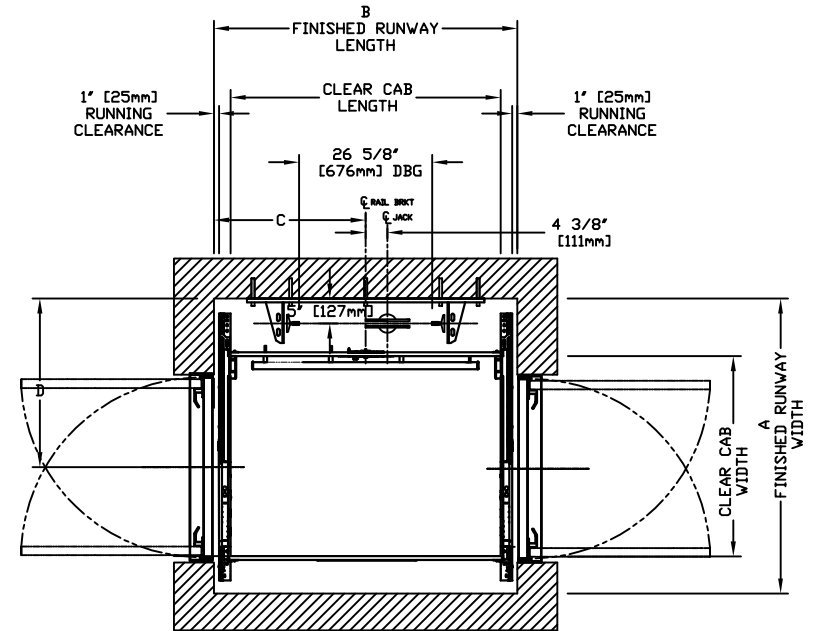


INFINITY AUTO SLIM DOORS W Swing Door Model TYPE 2

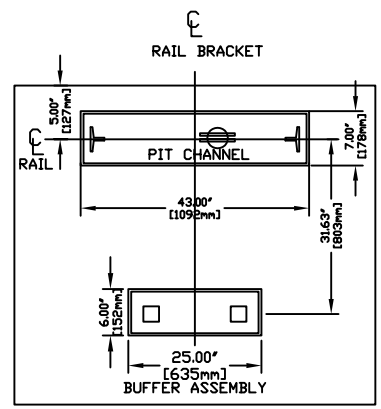


CHARACTERISTICS

- CAB DOOR TYPE: AUTO SLIM 2 SPEED DOORS
- ENTRANCE DOOR TYPE: AUTO SLIM 2 SPEED DOORS
- 2 SPEED DOORS FINISH: PAINT OR STAINLESS STEEL
- FULLY AUTOMATIC OPERATION TO OPEN THE DOORS UPON ARRIVAL AT THE LANDING
- LIGHTWEIGHT ALUMINUM SILL
- EMERGENCY BACK-UP BATTERY SYSTEM
- INFRARED DETECTION SYSTEM TO RETRACT DOORS BEFORE HITTING AN OBSTRUCTION



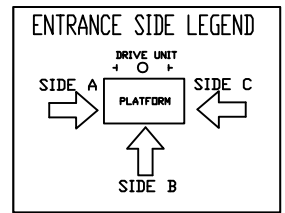
RAIL FORCES		R3 NOTE:
*R1	*R2	PIT FLOOR TO SUPPORT LOAD OF: 5.6Klps * (INCLUDES IMPACT)
304lbf.	194lbf.	FOR TOTAL PULL-OUT FORCE ON RAIL BRACKET, R1 MUST BE DOUBLED eg.
RAIL WEIGHT: 8.0 lbs / ft		



CLEAR INSIDE CAB WIDTH		CLEAR INSIDE CAB LENGTH		A FINISHED RUNWAY WIDTH		B FINISHED RUNWAY LENGTH		C RAIL CENTER LINE		D DOOR CENTER LINE	
mm	Inches	mm	Inches	mm	Inches	mm	Inches	mm	Inches	mm	Inches
914	36	1219	48	1499	59	1384	54 1/2	692	27 1/4	838	33
914	36	1372	54	1499	59	1537	60 1/2	768	30 1/4	838	33
914	36	1524	60	1499	59	1689	66 1/2	845	33 1/4	838	33
1016	40	1372	54	1524	60	1537	60 1/2	768	30 1/4	864	34
1219	48	1524	60	1626	64	1689	66 1/2	845	33 1/4	864	34

HD

DOCUMENT REVISION 002, DATE: 08/28/18



RESIDENTIAL ELEVATOR
INFINITY SLIMS DOORS W Swing Door TYPE 2

ALL INFORMATION IS SUBJECT TO CHANGE. PLEASE REFERENCE OUR ON-LINE DRAWINGS AT www.savaria.com FOR THE MOST RECENT UPDATES

savaria

SHEET # 1/1

AND MAY NOT BE USED BY OTHERS WITHOUT PRIOR WRITTEN CONSENT

RAIL BRACKET