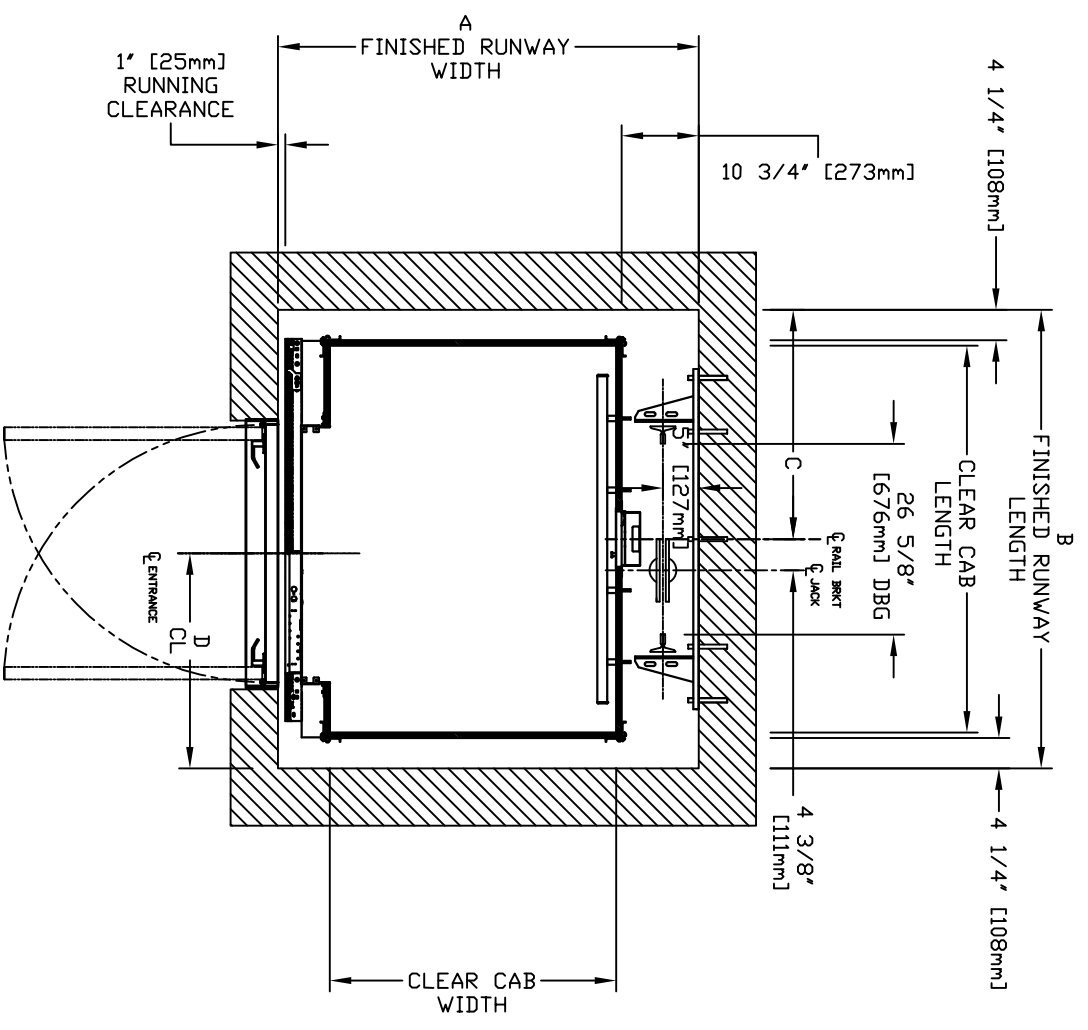
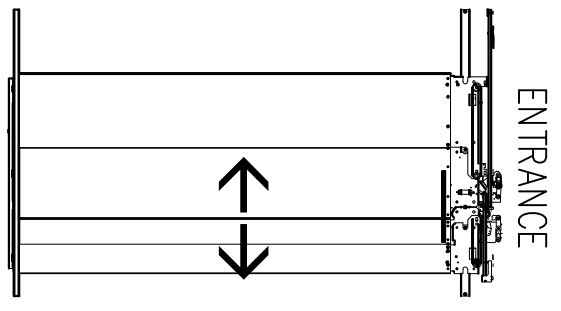
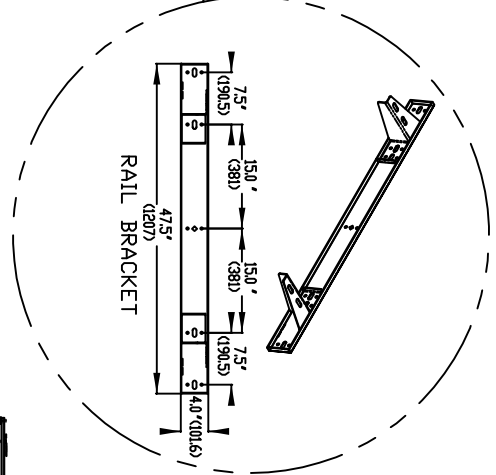
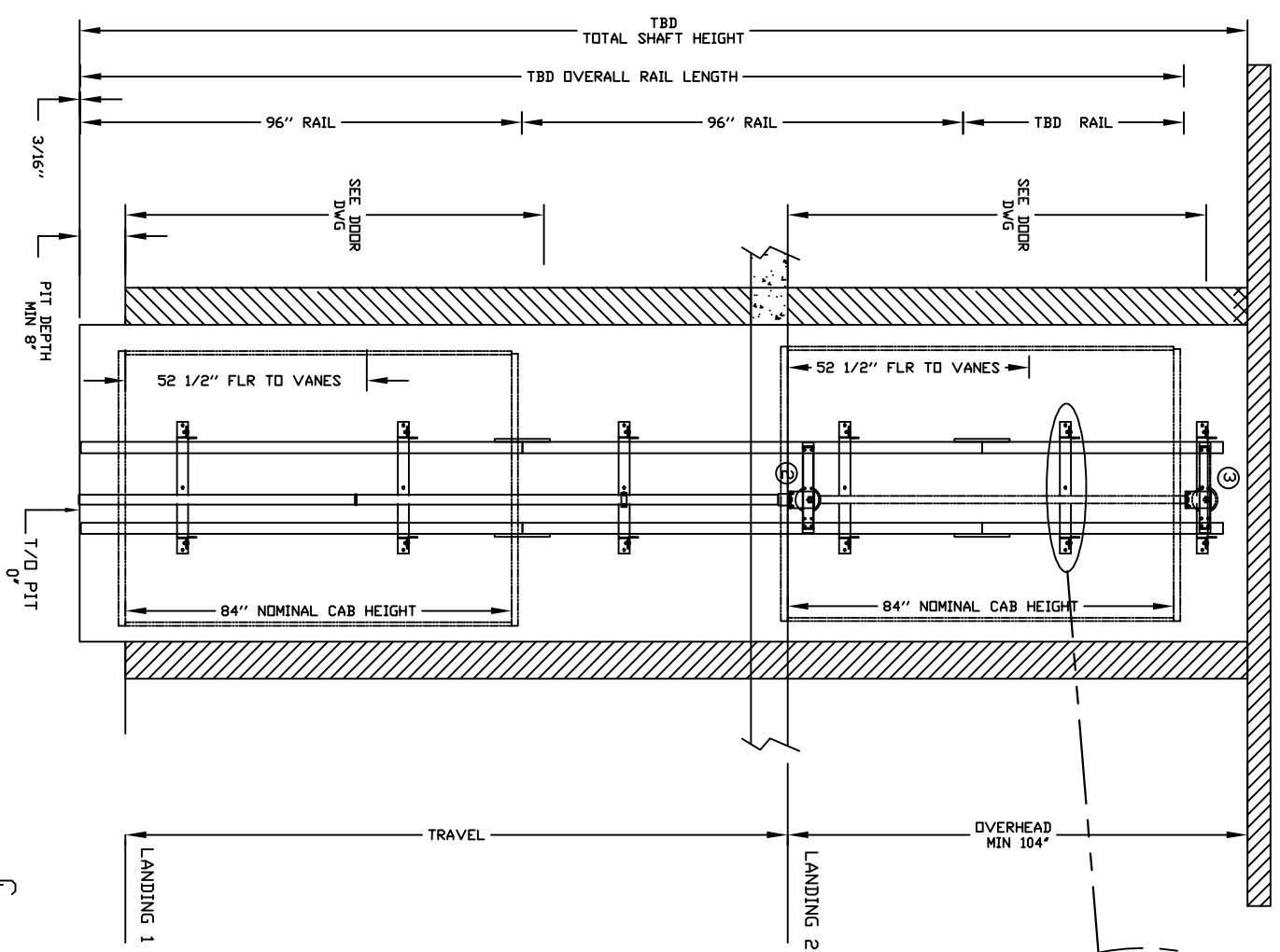


INFINITY AUTO SLIM DOORS W Swing Door Model TYPE 5



CHARACTERISTICS

- CAB DOOR TYPE: AUTO SLIM 2 SPEED DOORS
- ENTRANCE DOOR TYPE: AUTO SLIM 2 SPEED DOORS
- 2 SPEED DOORS FINISH: PAINT OR STAINLESS STEEL
- FULLY AUTOMATIC OPERATION TO OPEN THE DOORS UPON ARRIVAL AT THE LANDING LIGHTWEIGHT ALUMINUM SILL
- EMERGENCY BACK-UP BATTERY SYSTEM
- INFRARED DETECTION SYSTEM TO RETRACT DOORS BEFORE HITTING AN OBSTRUCTION

CLEAR INSIDE CAB WIDTH	CLEAR INSIDE CAB LENGTH	A		B		C		D			
		mm	Inches	mm	Inches	mm	Inches	mm	Inches		
914	36	1372	54	1391	54 3/4	1626	64	813	32	762	30
914	36	1524	60	1391	54 3/4	1778	70	889	35	762	30
1016	40	1372	54	1492	58 3/4	1626	64	813	32	762	30
1219	48	1524	60	1695	66 3/4	1778	70	889	35	762	30

DOCUMENT REVISION 002, DATE: 08/28/18

RESIDENTIAL ELEVATOR INFINITY SLIMS DOORS W Swing Door TYPE 5

ALL INFORMATION IS SUBJECT TO CHANGE.
 PLEASE REFERENCE OUR ON-LINE DRAWINGS AT
www.savaria.com FOR THE MOST RECENT UPDATES



RAIL FORCES

R1	R2	R3 NOTE:
304lbF	194lbF	PIT FLOOR TO SUPPORT LOAD OF: 5skips * (INCLUDES IMPACT)
FOR TOTAL PULL-OUT FORCE ON RAIL BRACKET, R1 MUST BE DOUBLED eg.		
RAIL WEIGHT : 80 lbs / ft		

RAIL BRACKET

