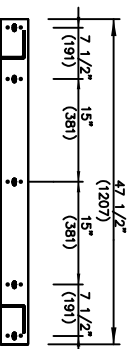
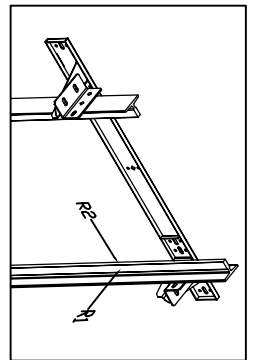
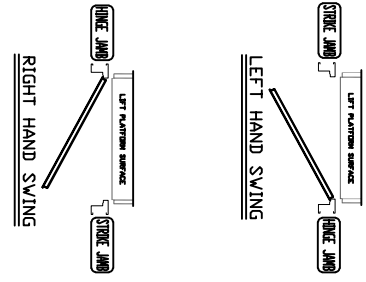


TOP RAIL BRACKET (3)	AT TOP OF HOISTWAY CONSULT YOUR CONCORD REPRESENTATIVE FOR EXACT LOCATION
INTERMEDIATE RAIL BRACKET (2)	48\"/>
BOTTOM RAIL BRACKET (1)	24\"/>

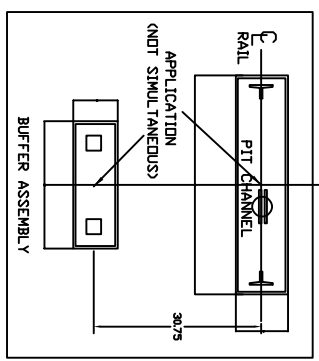
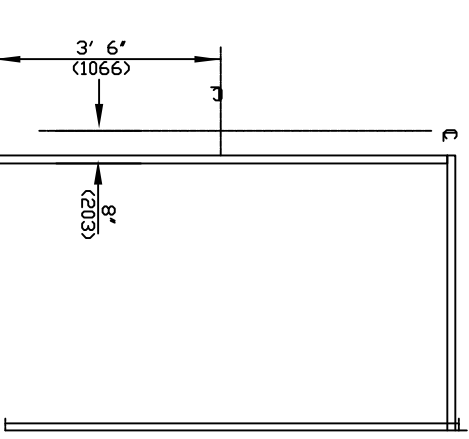
PIT / OVERHEAD REQUIREMENTS	
MAX. SPEED (ft./min)	30
MIN. PIT	12\"/>
TOTAL TRAVEL	92\"/>
MINIMUM OVERHEAD	92\"/>

*** NOTE: Additional pit equipment required when over 36\"/>

FLOOR No.	FLOOR HEIGHT
REAR FRONT	
TOTAL RISE	



RAIL FORCES		R3 NOTE:	
* R1	822klbf	PIT FLOOR TO SUPPORT LOAD OF: 822klbf * (INCLUDES IMPACT)	
* R2	251klbf	FOR TOTAL PULL-OUT FORCE ON RAIL BRACKET, R1 MUST BE DOUBLED eg. 844klbf.	
422klbf	251klbf	FOR LOCAL APPLICATION OF PIT LOAD, RAIL WEIGHT = 80 lbs / ft SEE PIT CHANNEL/BUFFER SKETCH.	



HALL FIXTURE LOCATION
LEFT HAND AS SHOWN
RIGHT HAND OPPOSITE
I. HALL BUTTON AT ALL FLOORS

DOCUMENT REVISION #002, DATE: 01/10/18

RESIDENTIAL ELEVATOR
INFINITY HD MODEL 4860

CUSTOMER:	DATE:	
PROJECT:	REVISION:	
LOCATION:	COMPLETED BY:	SHEET NO.