

TABLE 1  
RAIL BRACKETS

RAIL FORCES	
* R1	* R2
500 lbf	1570 lbf
RAIL WEIGHT: 1.80 lbf / ft	

FOR TOTAL PULL-OUT FORCE ON RAIL BRACKET, 402 x 720 = 1440 lbf FOR LOCAL APPLICATION OF PIT LOAD, R1 MUST BE DOUBLED.

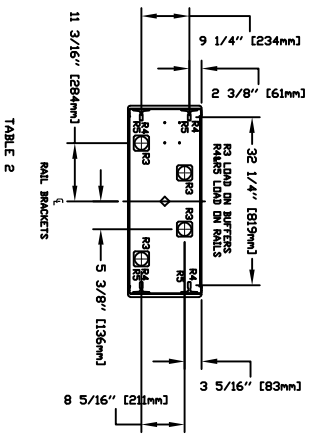


TABLE 2  
LOADS ON PIT

PIT RE-ACTION FORCE	LOADS ON PIT
R1	8000 LBS
R2	3000 LBS
R3	9500 LBS
R4	
R5	

PROVISIONS BY OTHERS

**HOST/VA** - THE HOST/VA MUST BE IN ACCORDANCE WITH SAFETY CODE FOR ELEVATORS AND ESCALATORS (ASSE A17.1) AND ALL STATE AND LOCAL CODES. ELEVATOR HOISTWAY MUST BE TO CLOSE RUNNING CLEARANCES OVER/AGENT LEVEL, PLUMB AND SQUARE AND ARE IN ACCORDANCE WITH THE DIMENSIONS IN THESE DRAWINGS.

**OVERHEAD CLEARANCE** - OVER/AGENT MUST ENSURE MINIMUM OVERHEAD CLEARANCE IS IN COMPLIANCE WITH CODES. MACHINERY, CABINETRY AND ELECTRICAL WIRING AS REQUIRED AND SHALL PATCH AND WALLS/FLOORS MAY REQUIRE TO BE CUT, DRILLED OR ALTERED IN THE HOISTWAY TO PERMIT THE PROPER INSTALLATION OF THE LIFT. CONTRACTOR/CUSTOMER TO VERIFY ALL DIMENSIONS AND REPORT ANY DISCREPANCIES TO OUR OFFICE IMMEDIATELY.

**STRUCTURAL** - ELEVATOR/SUPPORT WALL LOADS - STRUCTURE TO ANCHOR A CRANK SHAFI AND SAFETY HARNES, WHERE APPLICABLE/REQUIRED, TO BE PROVIDED BY CONTRACTOR. CONTRACTOR TO ASSURE THAT BUILDING AND SHAFI WALL SAFELY SUPPORT ALL LOADS BRAVING FOR LOADS IMPOSED BY THE EQUIPMENT.

**MACHINERY ROOM** (WHERE REQUIRED) - MACHINERY ROOM LOCATED AT THE LOWEST LEVEL. ADJUSTMENT TO HOISTWAY, UNLESS SHOWN OTHERWISE ON THE LAYOUT DRAWINGS, FIELD ADJUSTMENT BY INSTALLER MAY BE NECESSARY TO MEET JOB SITE CONDITIONS OR REGULATIONS. CONTRACTOR TO VERIFY ALL DIMENSIONS AND REPORT ANY DISCREPANCIES TO THE AUTHORITY HAVING JURISDICTION. SLEEVES FOR ELECTRIC LINES - FROM MACHINERY ROOM TO HOISTWAY AS REQUIRED. POSITION PER INSTALLERS INSTRUCTIONS.

TABLE 3  
ELECTRICAL

ITEM	DESCRIPTION	VOLTS	PHASE	FLA
MOTOR & EQUIP	50 AMP/300 VOLT	208 V	3PH	28.9 AMPS
MOTOR & EQUIP	50 AMP/300 VOLT	208 V	3PH	28.9 AMPS
CAB LIGHTS	15 AMP/120 VOLT	120 V	1PH	1.5 AMP

**ELECTRICAL** - SEE SPECIFICATIONS. UPGRADABLE CURED DISCONNECT WITH AUXILIARY CONTACT TO BREAK THE BATTERY FEED, OR CIRCUIT BREAKERS WITH A 3-POLE BREAKER FOR BATTERY FEED REQUIRED. IN COMPLIANCE WITH ELECTRICAL CODE, AS FOLLOWS: LOCATED ON WALL OR LOCK JAMB SIDE OF MACHINERY ROOM. JORDAN POWER MUST BE SPECIFIED. INSTALLATION CAN BEGAIN PERMANENT PROTECTION FROM ELECTRICAL SHOCK. LIGHTING - THE ILLUMINATION SHALL BE NOT LESS THAN 200 LX (15 FOT) AT THE FLOOR LEVEL IN ALL MACHINE ROOMS AND MACHINERY SPACES. ENSURE AT LEAST 100 LX (10 FOT) AMBIENT LIGHTING OVER LEFT AREA. PHONE - NEED A DEDICATED PHONE LAND LINE.

**ENTRANCES** - EXTERIOR PANEL MUST BE FASTENED TO SUBSTRATE AND BE PERPENDICULAR TO THE FLOOR AND WALLS. HOISTWAY AND FASCIA IS NOT SELF-SUPPORTING FOR LONG, CONTINUOUS RUNS. VOID OF ENTRANCES. ADEQUATE SUPPORT FOR THE FASCIA MUST BE PROVIDED.

**WATE LIFTING BEAM** - A 400LB MIN SWL BEAM MUST BE PROVIDED IN THE HOISTWAY. THE BEAM MUST BE FASTENED TO SUBSTRATE AND BE PERPENDICULAR TO THE FLOOR AND WALLS. HOISTWAY AND FASCIA IS NOT SELF-SUPPORTING FOR LONG, CONTINUOUS RUNS. VOID OF ENTRANCES. ADEQUATE SUPPORT FOR THE FASCIA MUST BE PROVIDED.

**NOTE C**  
ALL INFORMATION IS SUBJECT TO CHANGE. PLEASE REFERENCE OUR ON-LINE DRAWINGS AT [WWW.SAVARIA.COM](http://WWW.SAVARIA.COM) FOR THE MOST RECENT UPDATES

**RESIDENTIAL ELEVATOR**  
**ZENITH MODEL 36X54 TYPE 4**

CUSTOMER:	DATE:
PROJECT:	REVISION DATE:
LOCATION:	COMPLETED BY:

THE INFORMATION CONTAINED HEREIN IS THE EXCLUSIVE PROPERTY OF **savaria**  
AND MAY NOT BE USED BY OTHERS WITHOUT WRITTEN CONSENT

SHEET 7  
1/1