

PROVISIONS BY OTHERS

***GENERAL**
***HOSTWAY**- THE HOSTWAY MUST BE IN ACCORDANCE WITH "SAFETY CODE FOR ELEVATORS AND ESCALATORS" (ASME A17.1) AND ALL STATE AND LOCAL CODES AND REGULATIONS (SAME A17.1) AND ELEVATOR INSTALLATION. DUE TO CLOSE RUNNING CLEARANCES DIVER/AGENT MUST ENSURE MINIMUM CLEARANCE FROM OVERHEAD PIT AND LEVEL RAILS AND SPACERS ARE IN ACCORDANCE WITH THE DIMENSIONS ON THESE DRAWINGS.
***MINIMUM OVERHEAD CLEARANCE**- DIVER/AGENT MUST ENSURE MINIMUM OVERHEAD CLEARANCE IS IN COMPLIANCE WITH CODES. CONCRETE AND STEEL WALLS/DOORS AS REQUIRED AND MASONRY AND MAKE GOOD INCLUDING FINISH PAINTING ALL AREAS WHERE WALLS/FLOORS MAY REQUIRE TO BE CUT, DELIBED OR ALTERED IN ANY WAY TO PERMIT THE PROPER INSTALLATION OF THE LIFT. DIMENSIONS CONTRACTOR/CUSTOMER TO VERIFY ALL DIMENSIONS AND REPORT ANY DISCREPANCIES TO OUR OFFICE IMMEDIATELY.

***STRUCTURAL**
 FLOOR/SUPPORT WALL LOADS- STRUCTURE TO ANCHOR A CRANK SHAFT AND SAFETY HARNESS WHERE APPLICABLE/NEEDED TO BE PROVIDED BY CONTRACTOR. CONTRACTOR TO ASSURE THAT BUILDING AND SHAFT WILL SAFELY SUPPORT ALL LOADS IMPOSED BY THE LIFT EQUIPMENT. REFER TO THE TABLES ON THIS DRAWING FOR LOADS IMPOSED BY THE EQUIPMENT.
***MACHINE ROOM (WHERE REQUIRED)**
 LOCATION/ ACCESS- MACHINE ROOM LOCATED AT THE LOWEST LEVEL. DO NOT LOCATE MACHINE ROOM UNDER STAIRS. IN THE LATEST DRAWINGS, FIELD SITE CONDITIONS OR REGULATIONS NECESSARY TO MEET JOB SITE CONDITIONS OR REGULATIONS MACHINE ROOM DOOR IS TO BE LOCKABLE AND IS TO MEET THE REQUIREMENTS OF THE AUTHORITY HAVING JURISDICTION. SLEEVES FOR ELECTRIC LINES- FROM MACHINE ROOM TO HOSTWAY AS REQUIRED. POSITION PER INSTALLERS INSTRUCTIONS.

TABLE 3

DISCONNECT	TIME RELAY	FLA		
MOTOR & EQUIP	30 AMPS	208 volts	Three Phase	28.9 AMPS
MOTOR & EQUIP	40 AMPS	230 volt	Single Phase	35.0 AMPS
CAB LIGHTS	15 AMPS	115 V	Single Phase	

***ELECTRICAL** (SEE SPECIFICATIONS) LOCKABLE FUSED DISCONNECT EDWIR SUPPLY. CONTRACTOR TO BRIDGE THE BATTERY FEED, OR CIRCUIT BREAKERS WITH A 3-POLE BREAKER FOR BATTERY FEED REQUIRED, IN COMPLIANCE WITH ELECTRICAL CODE, AS FOLLOWS (LOCATED ON WALL ON LOCK JAMB SIDE OF MACHINE ROOM DOOR) PERMANENT POWER- BEFORE INSTALLATION CAN BEGIN, PERMANENT POWER MUST BE SUPPLIED.
***LIGHTING**- THE ILLUMINATION SHALL BE NOT LESS THAN 200 LX (19 Fc) AT THE FLOOR LEVEL IN ALL MACHINE ROOMS AND MACHINERY SPACES. ENSURE AT LEAST 100 LX (10 Fc) AMBIENT LIGHTING OVER LIFT AREA. PHONE- NEED A DEDICATED PHONE LAND LINE

***ENTRANCES**
 FASCIA PANEL BELOW UPPER LEVEL ENTRANCE- WHERE REQUIRED, FASCIA PANEL MUST BE FASTENED TO A SOLID WALL AND BE PERPENDICULAR TO THE FLOOR AND WALLS. HOSTWAY FASCIA IS NOT SELF-SUPPORTING FOR LONG CONTINUOUS RUNS VOID OF ENTRANCES. ADEQUATE SUPPORT FOR THE FASCIA MUST BE PROVIDED.

***NOTE LETTING BEAM**
 A 4000LB MIN SWL BEAM MUST BE PROVIDED IN THE OVERHEAD BEAM TO BE POSITIONED AS SHOWN IN ELEVATION & PLAN VIEWS. FOR OVERHEAD OF 108" POSITION THE UNDERSIDE OF BEAM AT 104" & BEAM MUST BE TEMPORARY.

***NOTE C**
 ALL INFORMATION IS SUBJECT TO CHANGE. PLEASE REFERENCE OUR ON-LINE DRAWINGS AT WWW.SAVARIA.COM FOR THE MOST RECENT UPDATES

108" [2743mm] OVERHEAD MIN. TO BOTTOM OF LIFTING BEAM

SEE DOOR DWG

LANDING 2

TOTAL TRAVEL

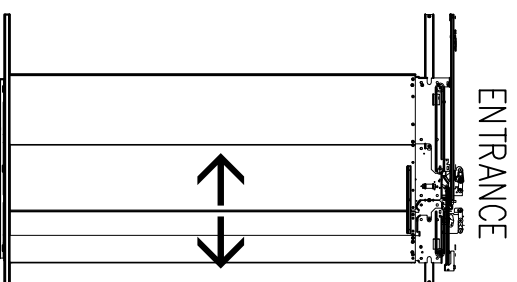
SEE DOOR DWG

HALL BUTTON NEEDED AT ALL FLOORS

2"x4" [51x102mm] ELECTRICAL BOX

6" (203)

LEFT HAND SHOWN RIGHT HAND OPPOSITE



58 1/8" [1477mm] FINISHED RUNWAY LENGTH

1 1/4" RUNNING CLEARANCE

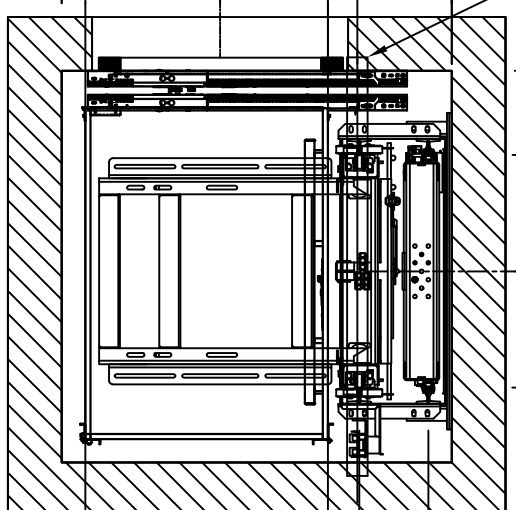
18 3/8" [467mm] LIFTING BEAM MIN SWL 4000lb

14" [356mm]

34 3/8" [873mm]

57 7/8" [1470mm] FINISHED RUNWAY WIDTH

3 1/2" [89mm]



34 1/2" [876mm] CLEAR INSIDE CAB

36" [914mm] OVERALL CAB WIDTH

10 1/4" [260mm] DBG

3 1/2" [89mm]

18 3/8" [467mm]

34 1/2" [876mm] DBG

48" [1219mm] CLEAR CAB DEPTH

29 3/4" [756mm] RAIL BRKT

3 1/2" [89mm]

11 3/16" [284mm]

9 1/4" [234mm]

2 3/8" [61mm]

32 1/4" [819mm]

5 3/8" [136mm]

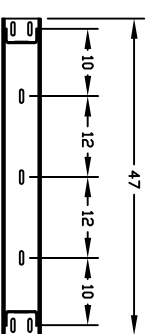
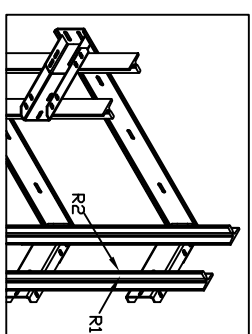


TABLE 1 RAIL BRACKETS

RAIL FORCES	
*R1	*R2
500 lbf	1570 lbf
RAIL WEIGHT 80 lbs / ft	

FOR TOTAL PULL-OUT FORCE ON RAIL BRACKET, 802 x 750 = 1440 lbf FOR LOCAL APPLICATION OF PIT LOAD. R1 MUST BE DOUBLED.

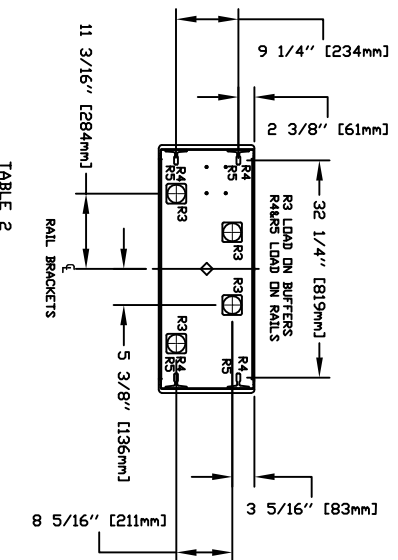


TABLE 2 PIT RE-ACTION FORCE LOADS ON PIT

R3	8000 LBS
R4	3000 LBS
R5	9500 LBS

RESIDENTIAL ELEVATOR

ZENITH MODEL 36X48 TYPE 1L-29 1/2 + SLIM

CUSTOMER:	DATE:	
PROJECT:	ISSUE DATE:	
LOCATION:	COMPLETED BY:	
THE INFORMATION INDICATED HEREIN IS THE EXCLUSIVE PROPERTY OF SAVARIA.		SHEET # 1/1