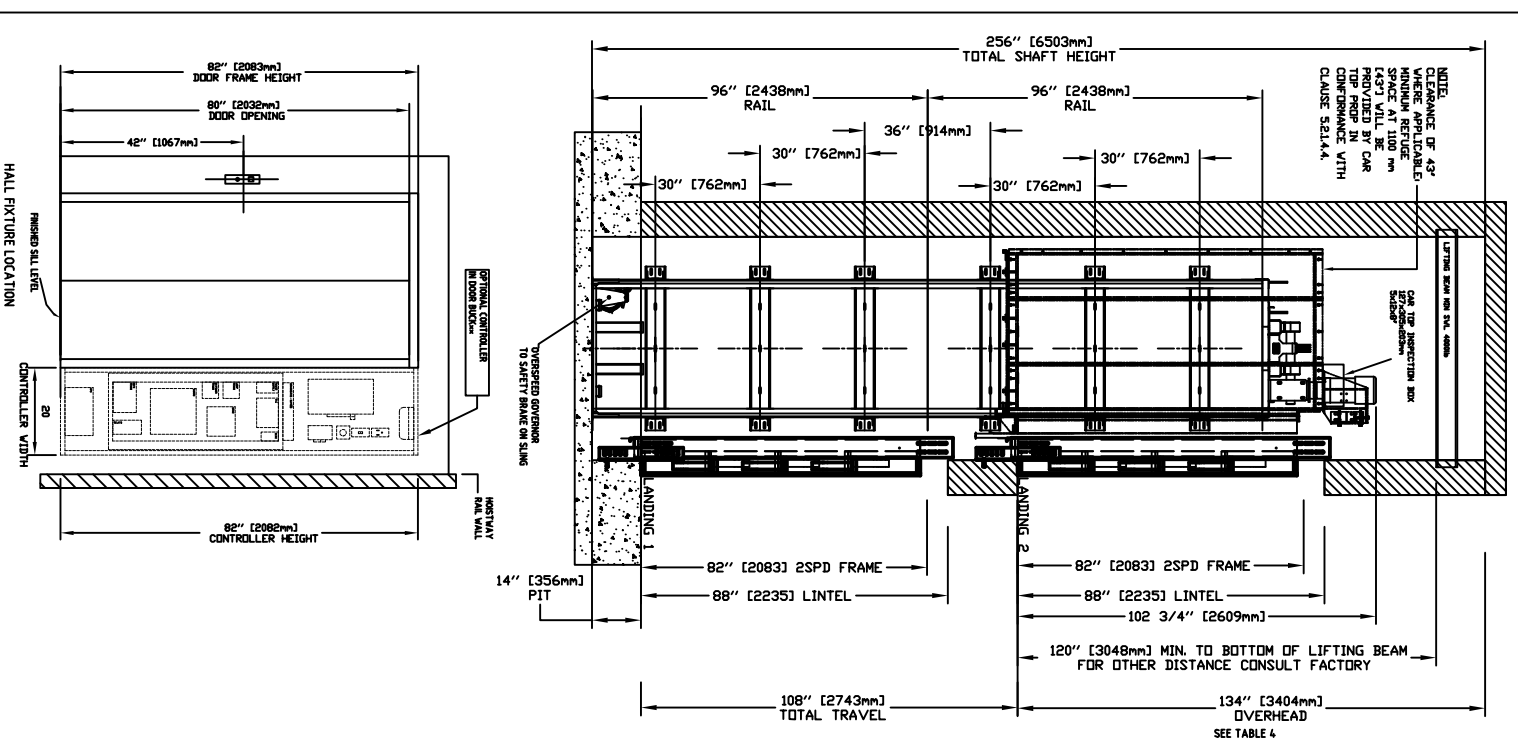
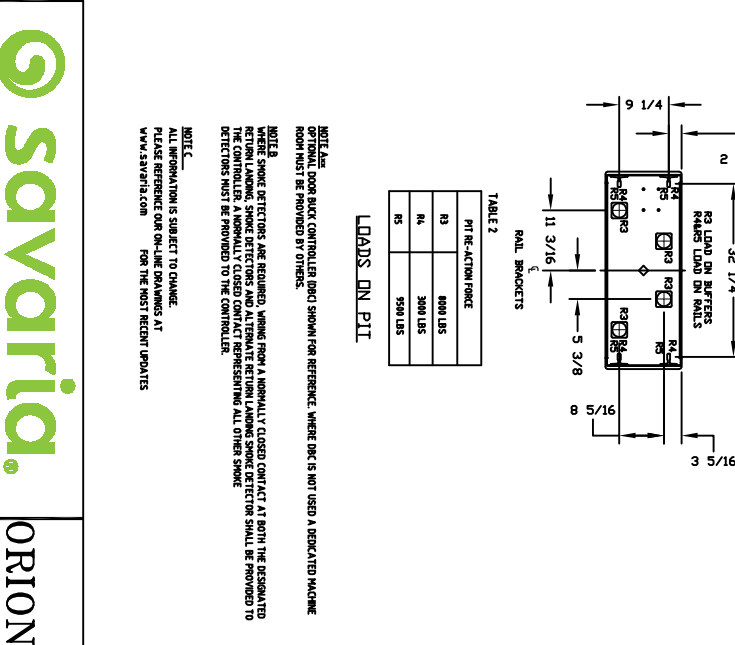
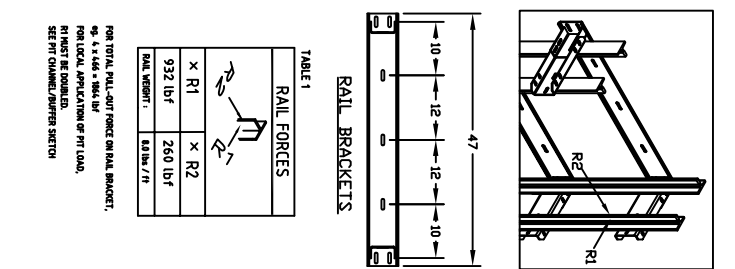
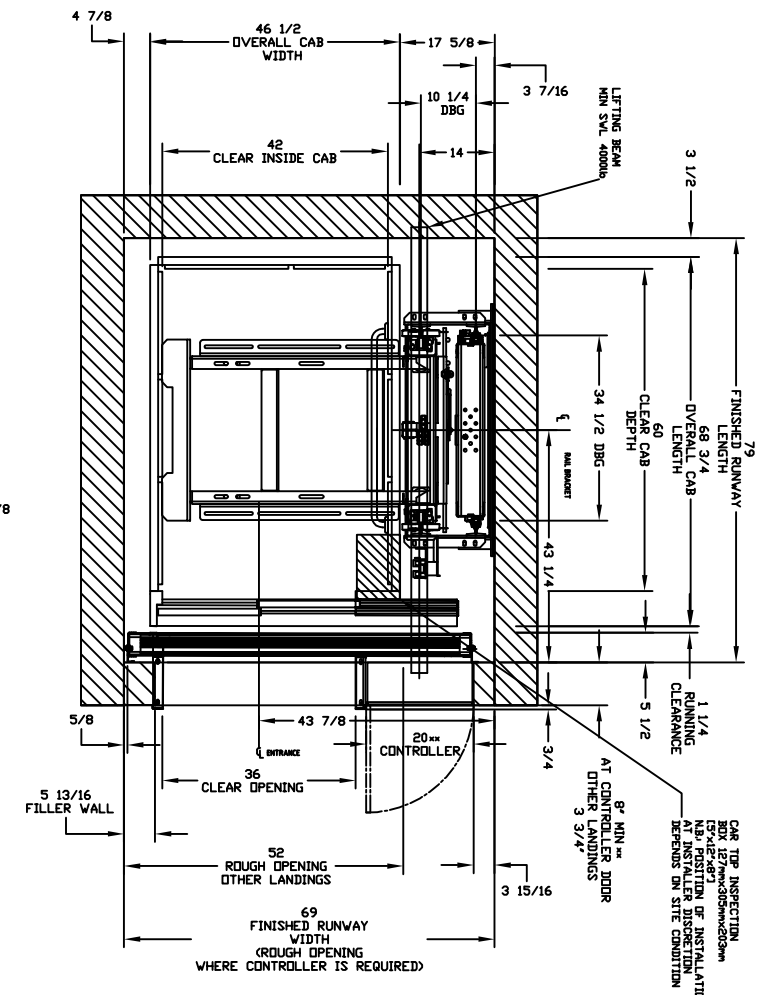


SECTIONAL VIEW - ORION MRL-4260 (1R)



PLAN VIEW - ORION MRL-4260 (1R) 2 SPEED WITUR DOORS



PROVISIONS BY OTHERS

GENERAL - THE USER MUST BE IN ACCORDANCE WITH LOCAL, STATE AND FEDERAL REGULATIONS AND REQUIREMENTS. ALL STATE AND LOCAL CODES MUST BE OBSERVED. THE USER MUST ENSURE THAT HOISTWAY AND PIT (WHERE PROVIDED) ARE PROTECTED FROM OVERLOADING AND COLLAPSE. THE USER IS RESPONSIBLE FOR THE PROTECTION OF THESE AREAS. THE USER MUST ENSURE THAT THE HOISTWAY AND PIT ARE PROTECTED FROM OVERLOADING AND COLLAPSE. THE USER MUST ENSURE THAT THE HOISTWAY AND PIT ARE PROTECTED FROM OVERLOADING AND COLLAPSE. THE USER MUST ENSURE THAT THE HOISTWAY AND PIT ARE PROTECTED FROM OVERLOADING AND COLLAPSE.

TABLE 3

WIRE & EQUIP. (DB LENGTH)	REQD. SIZE	TYPE	VOLTS	PHASE	FLA
30 AMPS	30 AMPS	208 VOLT	THREE PHASE	240 AMPS	
60 AMPS	60 AMPS	208 VOLT	THREE PHASE	350 AMPS	
15 AMPS	15 AMPS	115 V	SINGLE PHASE	350 AMPS	

TABLE 4

MAX. SPEED (ft./min)	PIT	TOTAL TRAVEL	MIN OVERHEAD (IN/1000)	EXISTING BLDG (IN/1000)
30			34.75(44)	40(27.5)

NOTE: THE USER MUST BE IN ACCORDANCE WITH LOCAL, STATE AND FEDERAL REGULATIONS AND REQUIREMENTS. ALL STATE AND LOCAL CODES MUST BE OBSERVED. THE USER MUST ENSURE THAT HOISTWAY AND PIT (WHERE PROVIDED) ARE PROTECTED FROM OVERLOADING AND COLLAPSE. THE USER IS RESPONSIBLE FOR THE PROTECTION OF THESE AREAS. THE USER MUST ENSURE THAT THE HOISTWAY AND PIT ARE PROTECTED FROM OVERLOADING AND COLLAPSE. THE USER MUST ENSURE THAT THE HOISTWAY AND PIT ARE PROTECTED FROM OVERLOADING AND COLLAPSE.