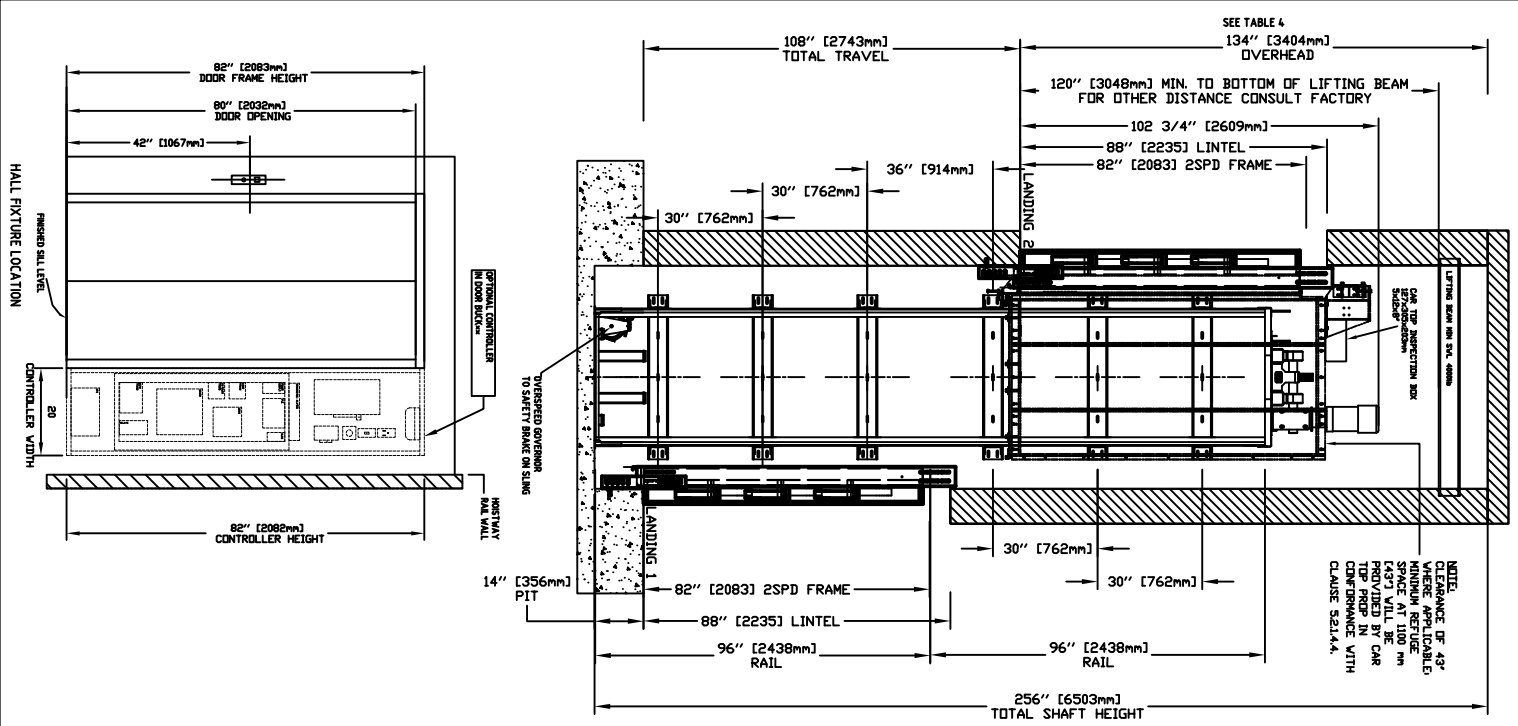


SECTIONAL VIEW - ORION MRL-4854 (2)



PLAN VIEW - ORION MRL-4854 (2) 2 SPEED WITTUR DOORS

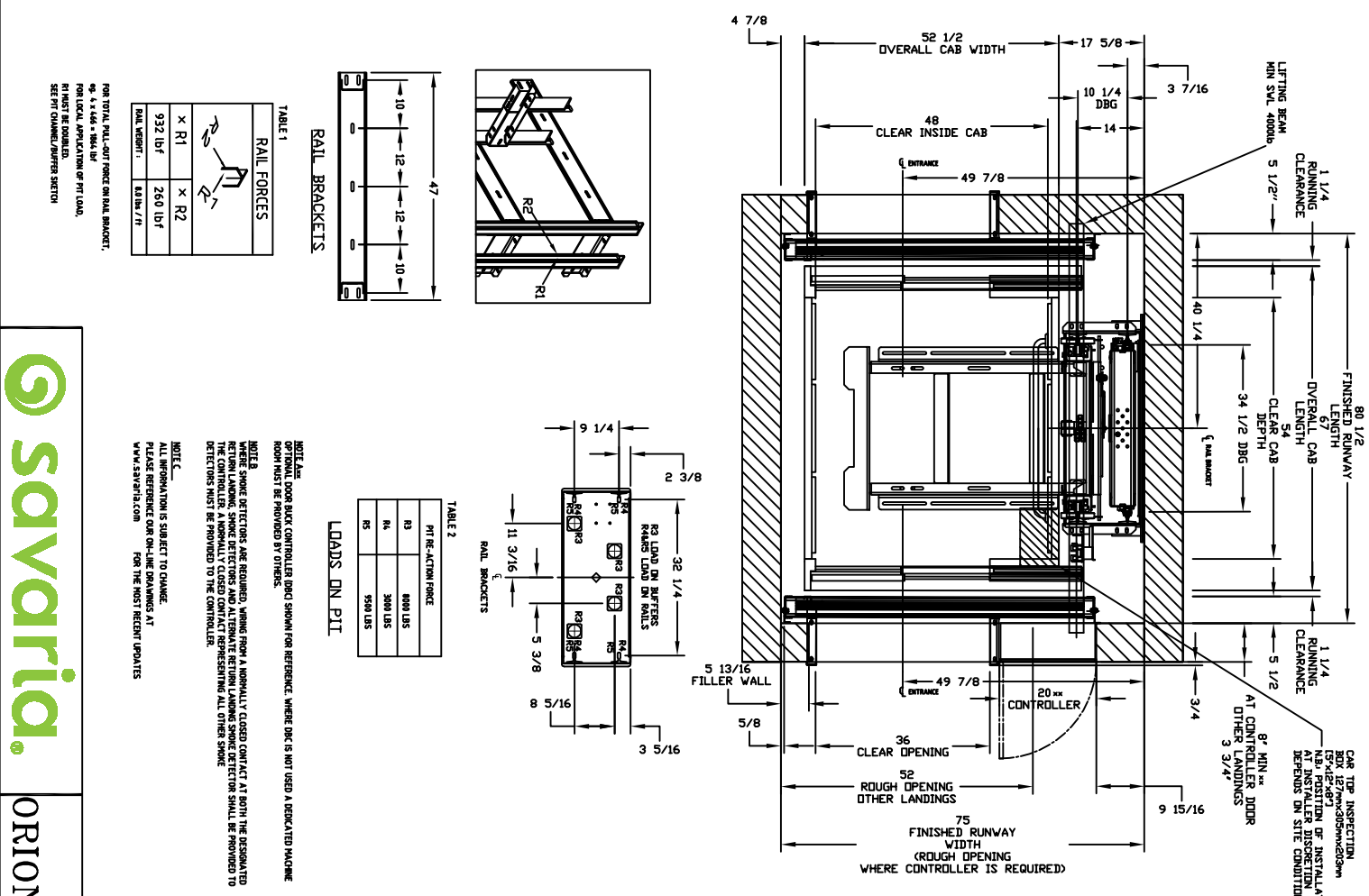


TABLE 1
RAIL FORCES

X R1	X R2
932 lbf	260 lbf
Rail Weight	8.1lbw/ft

FOR TOTAL RAIL-OFF FORCE ON RAIL BRACKET, SEE TABLE 2.
FOR TOTAL RAIL-OFF FORCE ON RAIL BRACKET, SEE TABLE 2.
FOR TOTAL RAIL-OFF FORCE ON RAIL BRACKET, SEE TABLE 2.
FOR TOTAL RAIL-OFF FORCE ON RAIL BRACKET, SEE TABLE 2.
FOR TOTAL RAIL-OFF FORCE ON RAIL BRACKET, SEE TABLE 2.

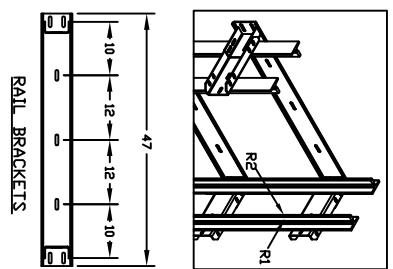


TABLE 2
LOADS ON PIT

PIT REACTION FORCE	
R3	3000 LBS
R4	8000 LBS
R5	5900 LBS

NOTE 1: OPTIONAL DOOR BACK CONTROLLER (DOB) SHOWN FOR REFERENCE. WHERE DOB IS NOT USED A DEDICATED MACHINE ROOM MUST BE PROVIDED BY OTHERS.

NOTE 2: WHERE SMOKE DETECTORS ARE REQUIRED, WIRING FROM A NORMALLY CLOSED CONTACT AT BOTH THE DESIGNATED RETURN LANDING, SMOKE DETECTORS AND ALTERNATE RETURN LANDING SMOKE DETECTOR SHALL BE PROVIDED TO THE CONTROLLER. A NORMALLY CLOSED CONTACT REPRESENTING ALL OTHER SMOKE DETECTORS MUST BE PROVIDED TO THE CONTROLLER.

NOTE 3: ALL INFORMATION IS SUBJECT TO CHANGE. PLEASE REFER TO OUR ONLINE DRAWINGS AT WWW.SAVARIA.COM FOR THE MOST RECENT UPDATES.

PROVISIONS BY OTHERS

GENERAL: THE WORKMAN MUST BE IN ACCORDANCE WITH LOCAL, STATE AND FEDERAL CODES AND REGULATIONS.

HOISTWAY: THE HOISTWAY MUST BE IN ACCORDANCE WITH LOCAL, STATE AND FEDERAL CODES AND REGULATIONS.

ELEVATOR: THE ELEVATOR MUST BE IN ACCORDANCE WITH LOCAL, STATE AND FEDERAL CODES AND REGULATIONS.

CONSTRUCTION: THE CONSTRUCTION MUST BE IN ACCORDANCE WITH LOCAL, STATE AND FEDERAL CODES AND REGULATIONS.

INSULATION: THE INSULATION MUST BE IN ACCORDANCE WITH LOCAL, STATE AND FEDERAL CODES AND REGULATIONS.

FINISHES: THE FINISHES MUST BE IN ACCORDANCE WITH LOCAL, STATE AND FEDERAL CODES AND REGULATIONS.

MAINTENANCE: THE MAINTENANCE MUST BE IN ACCORDANCE WITH LOCAL, STATE AND FEDERAL CODES AND REGULATIONS.

SAFETY: THE SAFETY MUST BE IN ACCORDANCE WITH LOCAL, STATE AND FEDERAL CODES AND REGULATIONS.

TABLE 3

WATTAGE & EQUIP.	REQD. TIME RELY. SEC.	VOLTS	PHASE	FLA
20 AMPS	30 SECS	208 VOLT	THREE PHASE	26.9 AMPS
60 AMPS	40 AMPS	208 VOLT	THREE PHASE	75.3 AMPS
15 AMPS	15 AMPS	115 V	SINGLE PHASE	18.2 AMPS

ELECTRICAL: USE SPECIFIC TERMINAL LOCATIONS AND WIRING METHODS. THE WIRING MUST BE IN ACCORDANCE WITH LOCAL, STATE AND FEDERAL CODES AND REGULATIONS.

GROUNDING: THE GROUNDING MUST BE IN ACCORDANCE WITH LOCAL, STATE AND FEDERAL CODES AND REGULATIONS.

WIRING: THE WIRING MUST BE IN ACCORDANCE WITH LOCAL, STATE AND FEDERAL CODES AND REGULATIONS.

CONNECTIONS: THE CONNECTIONS MUST BE IN ACCORDANCE WITH LOCAL, STATE AND FEDERAL CODES AND REGULATIONS.

SAFETY: THE SAFETY MUST BE IN ACCORDANCE WITH LOCAL, STATE AND FEDERAL CODES AND REGULATIONS.

TABLE 4

TABLE 4
PIT / OVERHEAD REQUIREMENTS

MAX. SPEED (ft/min)	PIT	TOTAL TRAVEL	MIN. OVERHEAD	EXISTING BLDG. DIMENSION BLDG.
30	16'-00"	34'-00"	34'-00"	34'-00"

NOTE 1: THE BEAM MUST BE PROVIDED IN THE OVERHEAD BEAM TO BE POSITIONED AS SHOWN IN ELEVATION & PLAN VIEWS FROM OVERHEAD OF THE POSITION THE UNDERSIDE OF BEAM AT 94" ± BEAM MUST BE TEMPORARY.

NOTE 2: THE BEAM MUST BE PROVIDED IN THE OVERHEAD BEAM TO BE POSITIONED AS SHOWN IN ELEVATION & PLAN VIEWS FROM OVERHEAD OF THE POSITION THE UNDERSIDE OF BEAM AT 94" ± BEAM MUST BE TEMPORARY.

NOTE 3: THE BEAM MUST BE PROVIDED IN THE OVERHEAD BEAM TO BE POSITIONED AS SHOWN IN ELEVATION & PLAN VIEWS FROM OVERHEAD OF THE POSITION THE UNDERSIDE OF BEAM AT 94" ± BEAM MUST BE TEMPORARY.