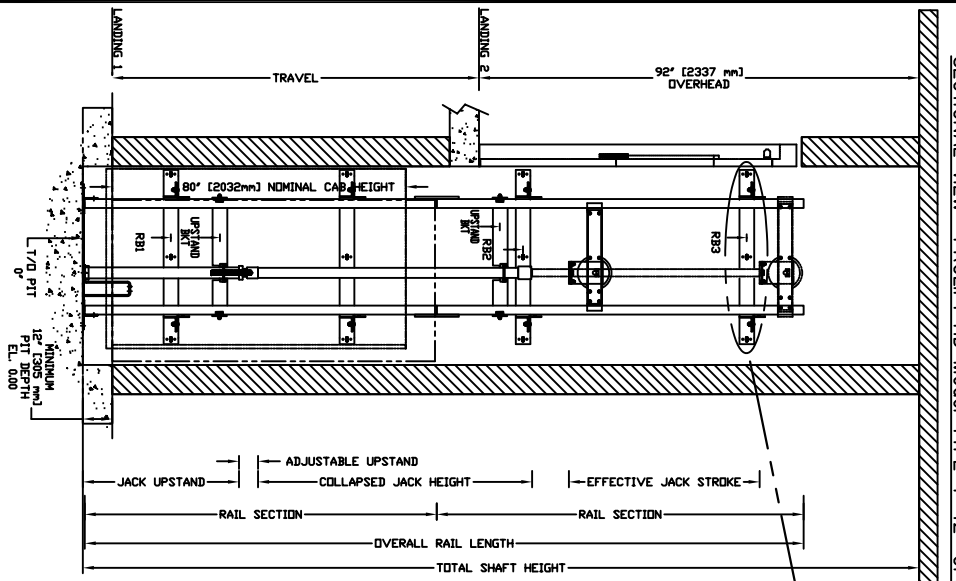
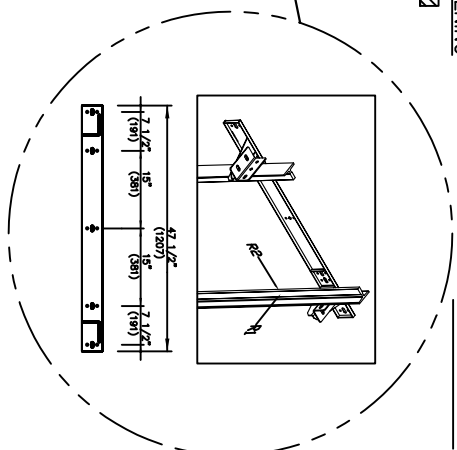


SECTIONAL VIEW - PROLIFT HD Model TYPE 4-42" OPENING

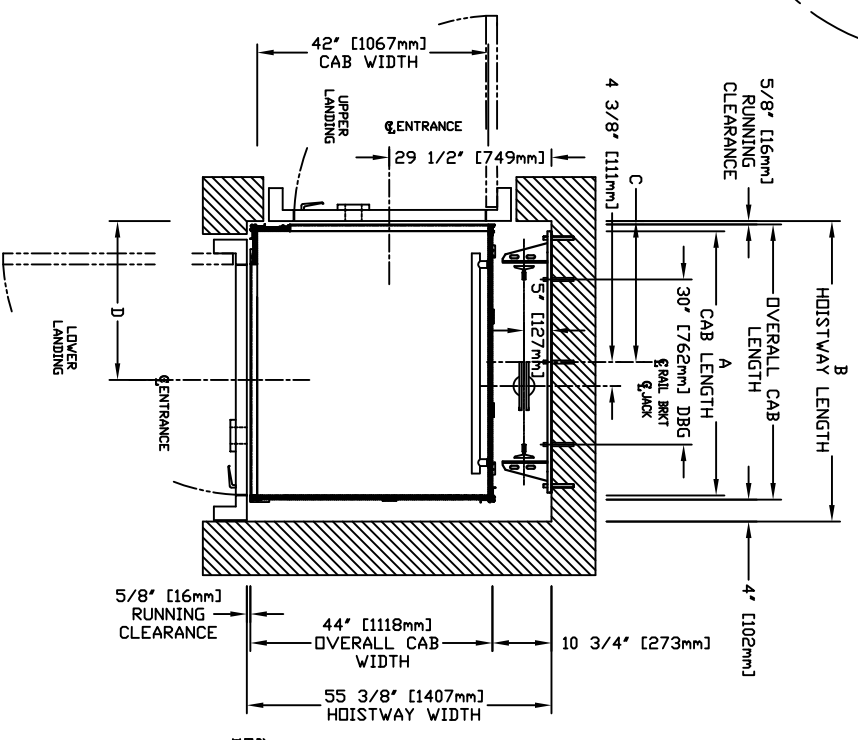


RAIL BRACKET



| | |
|-------------------------------|---|
| TOP RAIL BRACKET RB3 | AT TOP OF HOISTWAY CONSULT YOUR REPRESENTATIVE FOR EXACT LOCATION |
| INTERMEDIATE RAIL BRACKET RB2 | 48" [1219mm] INTERVALS ABOVE BOTTOM BRACKET |
| BOTTOM RAIL BRACKET RB1 | 24" [610mm] ABOVE PIT FLOOR |

PLAN VIEW - PROLIFT HD Model TYPE 4-42" OPENING



| RAIL FORCES | | CAPACITY | |
|----------------------------|-------------|-----------|-----------|
| *R1 | *R2 | 1400 lbs. | 1400 lbs. |
| 355.03lb.f. | 251.50lb.f. | 1000 lbs. | 1000 lbs. |
| 304 lb.f. | 194 lb.f. | | |
| RAIL WEIGHT : 8.0 lbs / ft | | | |

| PIT FLOOR TO SUPPORT LOAD OF: | | CAPACITY | |
|-------------------------------|-----------|-----------|-----------|
| 6.4 Kips | 1400 lbs. | 1400 lbs. | 1400 lbs. |
| 5.33kips | 1000 lbs. | 1000 lbs. | 1000 lbs. |

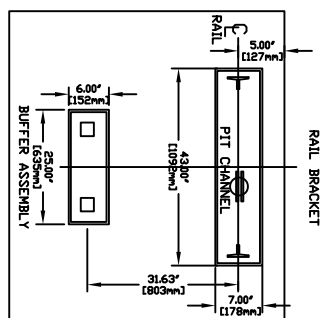
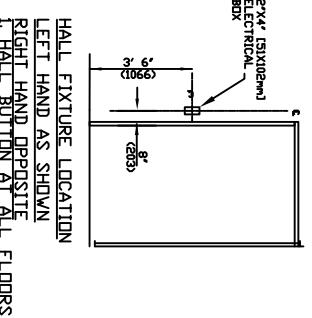
FOR TOTAL PULL-OUT FORCE ON RAIL BRACKET, R1 MUST BE DOUBLED eg. 608 lb.f for 1000 lbs.

R3 NOTE:

PIT FLOOR TO SUPPORT LOAD OF:
* (INCLUDES IMPACT)



| HOISTWAY DIMENSION | | | | | | | |
|--------------------|-----------------|-----------------------|----------------------|-----|--------|------|--------|
| A | | B | | C | | D | |
| CAP LENGTH | HOISTWAY LENGTH | RAIL BRKT CENTER LINE | ENTRANCE CENTER LINE | | | | |
| mm | Inches | mm | Inches | mm | Inches | mm | Inches |
| 1372 | 54 | 1540 | 60 5/8 | 727 | 28 5/8 | 886 | 34 7/8 |
| 1524 | 60 | 1692 | 66 5/8 | 803 | 31 5/8 | 1038 | 40 7/8 |



COMMERCIAL WHEELCHAIR LIFT

PROLIFT HD MODEL TYPE 4-42" OPENING

| | | |
|-----------|----------------|------------|
| CUSTOMER: | DATE: | |
| PROJECT: | REVISION LINE: | |
| LOCATION: | COMPLETED BY: | JOB NO.: |
| | | SHEET NO.: |