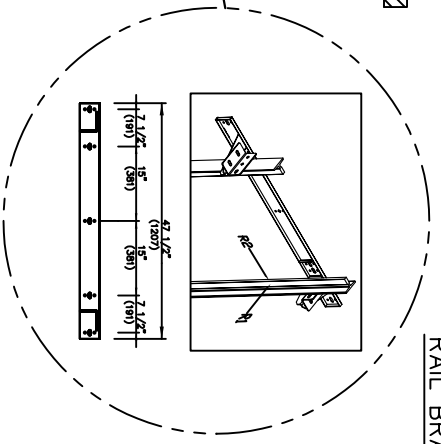
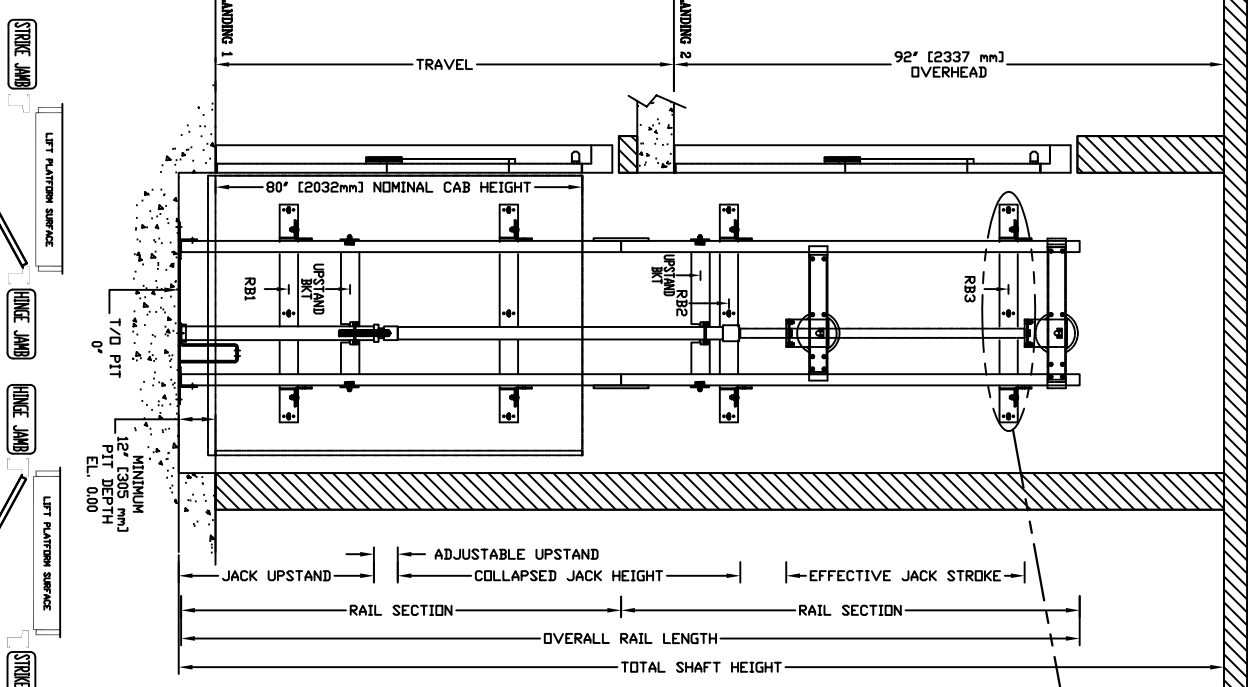


SECTIONAL VIEW - PROLIFT HD Model 4860 TYPE 1L



RAIL BRACKET

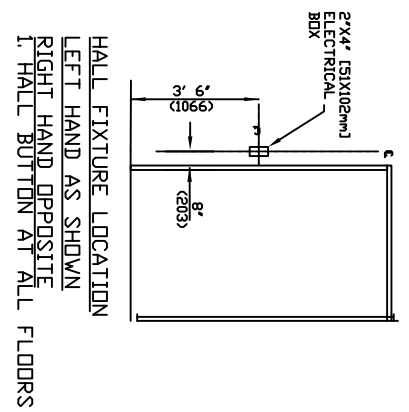
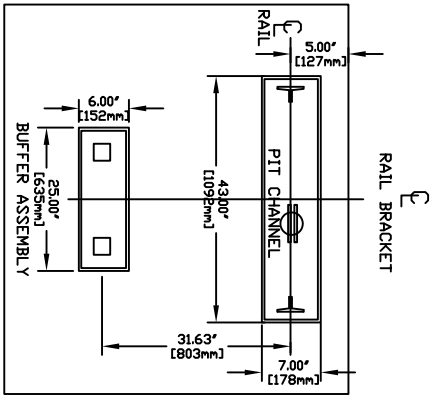
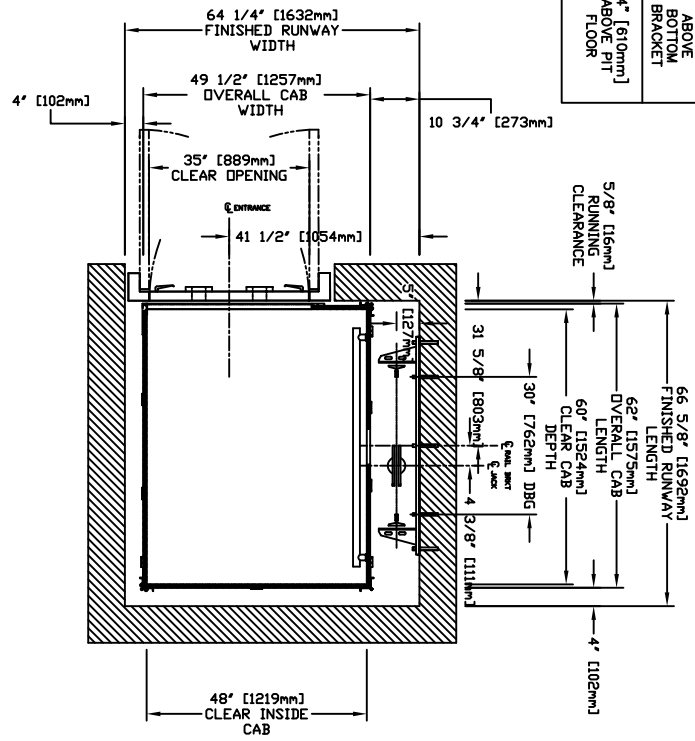
RAIL FORCES		CAPACITY	
*R1	*R2	1400 lbs.	1000 lbs.
422 lbf.	251,500 lbf.		
355,030 lbf.	251,500 lbf.		
RAIL WEIGHT: 80 lbs / ft			

R3 NOTE:		CAPACITY	
PIT FLOOR TO SUPPORT LOAD OF: * (INCLUDES IMPACT)			
8.22 Kips	1400 lbs.		
6.4 Kips	1000 lbs.		

FOR TOTAL PULL-OUT FORCE ON RAIL BRACKET, R1 MUST BE DOUBLED eg. 608 lbf for 1000 lbs.

TOP RAIL BRACKET	AT TOP OF HOISTWAY CONSULT YOUR CONCERNED REPRESENTATIVE FOR EXACT RB3 LOCATION
INTERMEDIATE RAIL BRACKET RB2	48" [1219mm] ABOVE BOTTOM BRACKET
BOTTOM RAIL BRACKET RB1	24" [610mm] ABOVE PIT FLOOR

PLAN VIEW - PROLIFT HD Model 4860 TYPE 1L



HALL FIXTURE LOCATION  
LEFT HAND AS SHOWN  
RIGHT HAND OPPOSITE  
1" HALL BUTTON AT ALL FLOORS

LEFT HAND SWING  
RIGHT HAND SWING

COMMERCIAL WHEELCHAIR LIFT  
PROLIFT HD MODEL 4860 TYPE 1L

CUSTOMER: \_\_\_\_\_ PROJECT: \_\_\_\_\_ DATE: \_\_\_\_\_  
 LOCATION: \_\_\_\_\_ REVISION DATE: \_\_\_\_\_ JOB NO.: \_\_\_\_\_  
 DRAWN BY: \_\_\_\_\_ CHECKED BY: \_\_\_\_\_ SHEET NO.: \_\_\_\_\_

**savaria**