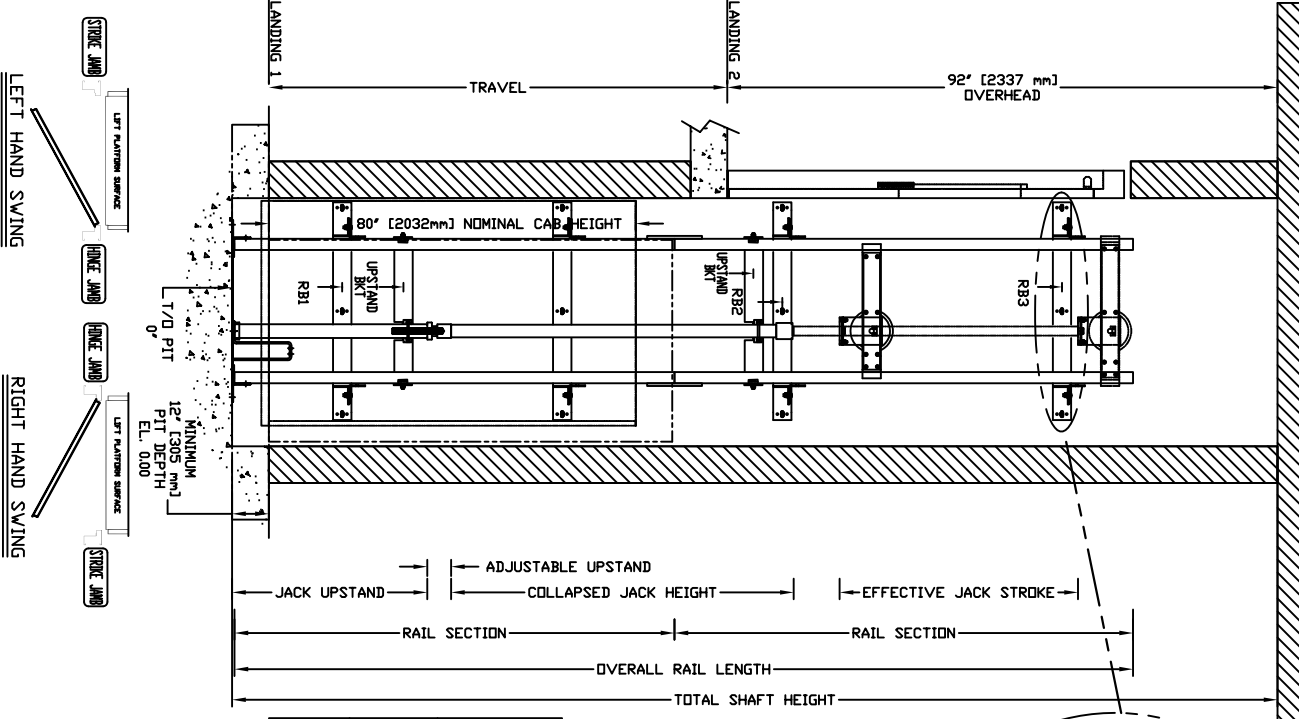
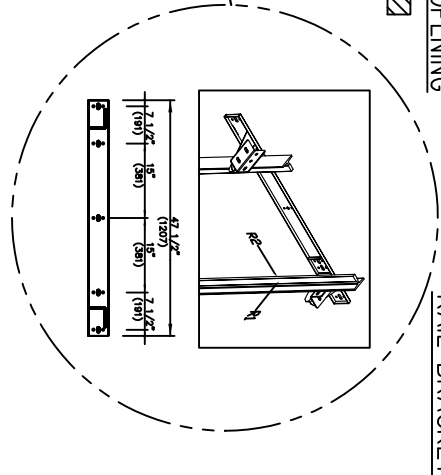


SECTIONAL VIEW - PROLIFT HD Model 4860 TYPE 4-36" OPENING



RAIL BRACKET



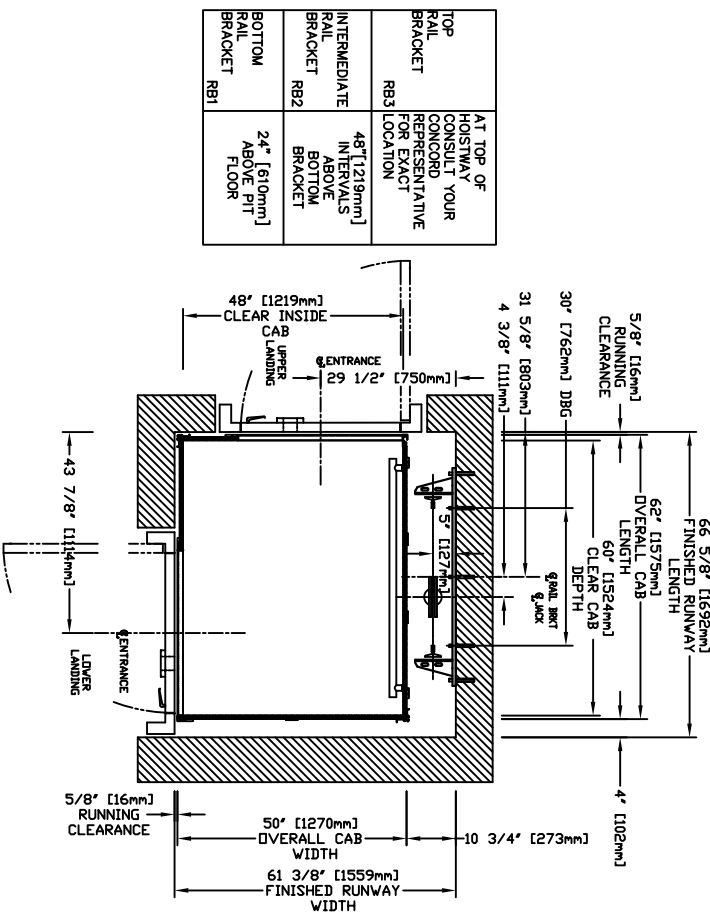
RAIL FORCES	
*R1	*R2
422 lbf.	251,50lbf.
355,03lbf.	251,50lbf.
RAIL WEIGHT : 8.0 lbs / ft	

CAPACITY	
1400 lbs.	1000 lbs.

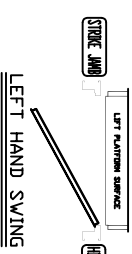
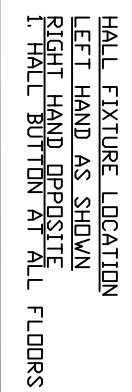
R3 NOTE:	
PIT FLOOR TO SUPPORT LOAD OF: * (INCLUDES IMPACT)	
8,22 Kips	1400 lbs.
6.4 Kips	1000 lbs.

FOR TOTAL PULL-OUT FORCE ON RAIL BRACKET, R1 MUST BE DOUBLED eg. 608 lbf for 1000 lbs.

PLAN VIEW - PROLIFT HD Model 4860 TYPE 4-36" OPENING



TOP RAIL BRACKET	AT TOP OF HOISTWAY CONCORD REPRESENTATIVE FOR EXACT LOCATION
RB3	48" [1219mm] ABOVE BOTTOM BRACKET
INTERMEDIATE RAIL BRACKET	
RB2	24" [610mm] ABOVE PIT FLOOR
BOTTOM RAIL BRACKET	
RB1	



DOCUMENT REVISION #0, DATE: 12/09/10

COMMERCIAL WHEELCHAIR LIFT
PROLIFT HD MODEL 4860 TYPE 4-36" OPENING

CUSTOMER:	DATE:
PROJECT:	REVISION:
LOCATION:	COMPLETED BY:
JOB NO.:	SHEET NO.: