



# 21 SERIES

## 2-POST HYDRAULIC LIFT



MATERIAL HANDLING SOLUTIONS

www.pflow.com  
P (414) 352 9000  
F (414) 352 9002  
6720 N. Teutonia Ave.  
Milwaukee, WI 53209

**Transports materials between two levels. Carriage remains level regardless of load placement.**



- Lifts loads up to 8,000 lbs. Carriage sizes up to 12' x 10'.
- Vertical rise to 22'. Standard vertical travel is 24 FPM.
- Straddle or cantilever.
- Indoor or outdoor use.
- Lifetime structural warranty.
- ASME B20.1 compliant.

### GENERAL

Principal components of the 21 Series are guide columns, carriage and hydraulic actuating mechanism.

### STRUCTURE

Guide columns are 6" wide flange. Carriage is fabricated of heavy-duty structural members with steel deck plate. Other deck surfaces available. Straddle or cantilever carriage available, depending on application.

- Carriage is lifted and lowered by chain over sprockets actuated by column-mounted cylinders. Synchronized shaft ensures that carriage stays level at all times.
- Highly stable loading and unloading operations maintained by pressure switch that prevents carriage from drifting or sinking.
- Check valves hold carriage in place in event of power loss.
- Certified safety cams prevent carriage descent in the event of a chain failure.
- Velocity fuses prevent uncontrolled carriage descent in the event of a hose rupture.
- Field wiring costs greatly reduced by optional quick-connect cabling for push-button stations and gate interlocks.
- Optional hot-dipped galvanized or epoxy finish available for outdoor or wash-down environments.
- Explosion-proof components available for classified environments.
- DeckLock Safety System available for added security at critical upper levels.

### OPERATION

Carriage is lifted and lowered by two hydraulic cylinders mounted on guide columns. Cylinders are actuated by a remote mounted hydraulic pump. Transmission of the lifting force is through roller chain attached to the cylinders and carriage. A torsion bar links the two cylinders to equalize the load and ensure carriage remains level at all times.



# 21 SERIES

## 2-POST HYDRAULIC LIFT



MATERIAL HANDLING SOLUTIONS

www.pflow.com  
 P (414) 352 9000  
 F (414) 352 9002  
 6720 N. Teutonia Ave.  
 Milwaukee, WI 53209

### ELECTRICAL

Standard power requirements are 208/230/460VAC, 3-phase (single-phase available). Control voltage is 24VAC. Push button stations and pump mounted pre-wired control panel are NEMA 12 rated. Push button stations provided at each level and include call/send operators and mushroom head emergency stop. Quick connect pre-wiring is optional.

### SAFETY FEATURES

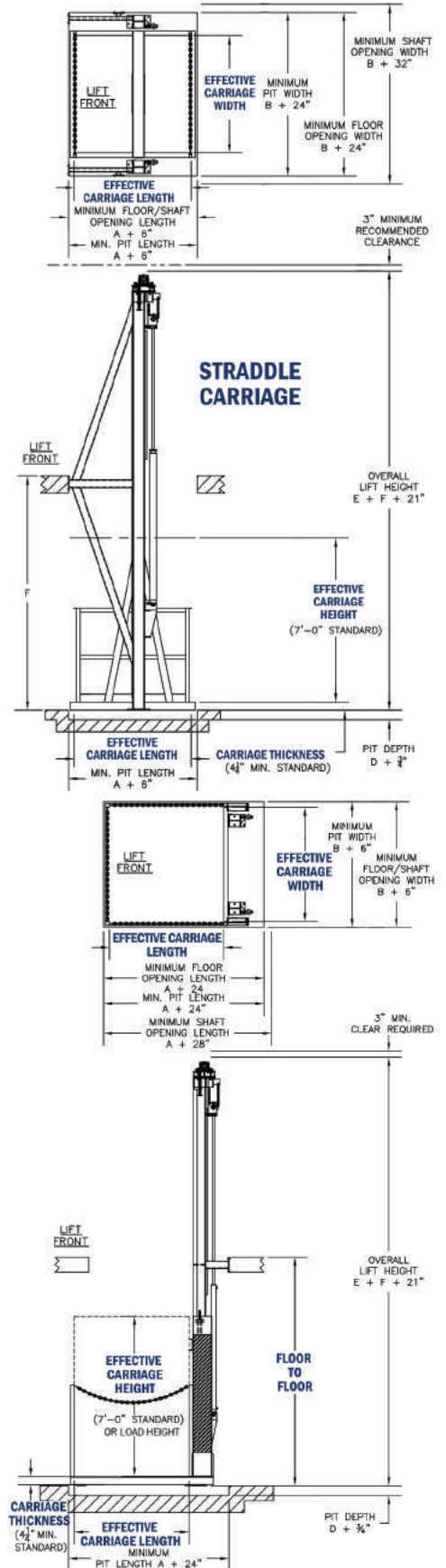
Upward travel of carriage limited by mechanical stops that ensure positive leveling with upper deck. Positive mechanical stops prevent overtravel. Pressure builds to "lock" carriage into position at upper level. NO RIDER signs posted at each point of operation. DeckLock Safety System available for added security at critical upper levels.

### CARRIAGE SIDE GUARDS

Carriage is equipped with safety rails on non-operating sides, and a safety chain, drop bars or gates on operating ends. Optional expanded metal or sheet metal carriage side guards are available.

### SAFETY ENCLOSURES / GATES

Safety codes (ASME B20.1) require interlocked gates with enclosures on all sides of the lift. Enclosures must be a minimum of 8' high and reject a ball 2" in diameter.



- A Effective Carriage Length
- B Effective Carriage Width
- D Carriage Thickness
- E Upright Height or Load Height
- F Vertical Rise



## 1. Product Name

- PFlow Series 21 Hydraulic Vertical Lift

## 2. Manufacturer

PFlow Industries, Inc.  
6720 N. Teutonia Avenue  
Milwaukee, WI 53209  
Phone: (414) 352-9000  
Fax: (414) 352-9002  
Email: [info@pflow.com](mailto:info@pflow.com)  
Web: [www.pflow.com](http://www.pflow.com)

## 3. Product Description

PFlow Industries, Inc. has been an industry-leading provider of custom engineered vertical reciprocating conveyors (VRCs) for nearly 40 years. Today, with more than 16,000 vertical lift installations worldwide, PFlow Industries offers a full line of custom engineered hydraulic, mechanical and fully automated VRC systems.

### Basic Use

PFlow Series 21 Hydraulic Vertical Lift is a cost-saving two-post vertical reciprocating conveyor that moves materials between two levels. Manufactured to ANSI/ASME B20.1 safety standards, PFlow Series 21 is capable of vertical rise heights to 22' and load capacities to 6000 lbs.

PFlow Series 21 Hydraulic Vertical Lift can be installed to mezzanine through-floor interior and exterior applications and is easily configured for load and unload from any one of the three operating sides. It is ideal for industrial facilities, warehouses and distribution centers that regularly move medium loads.

### Materials, Composition

Each PFlow Series 21 Hydraulic Vertical Lift has guide columns, a moving carriage and hydraulic actuating mechanism. Both levels of the lift have NEMA 12-compliant control stations, allowing full call-and-send capability from either level.

Guide columns are 6" wide flange sections with two vertical columns. The carriage is fabricated of 4" or 6" structural members with a steel deck plate. Additional deck surfaces are available.

Cylinders, actuated by a remote mounted hydraulic pump, lift and lower the carriage. Transmission of the lifting force is through roller chain attached to the cylinders and carriage.



A torsion bar links the cylinders to equalize the load and ensure the carriage remains level.

Primary components of the Series 21 Hydraulic Vertical Lift are guide columns and the carriage.

### Types

Two configurations are available:

- Straddle, with columns on each side of the carriage
- Cantilever, with both columns positioned at the back

### Colors, Sizes

PFlow Series 21 is custom engineered to specific application and height requirements.

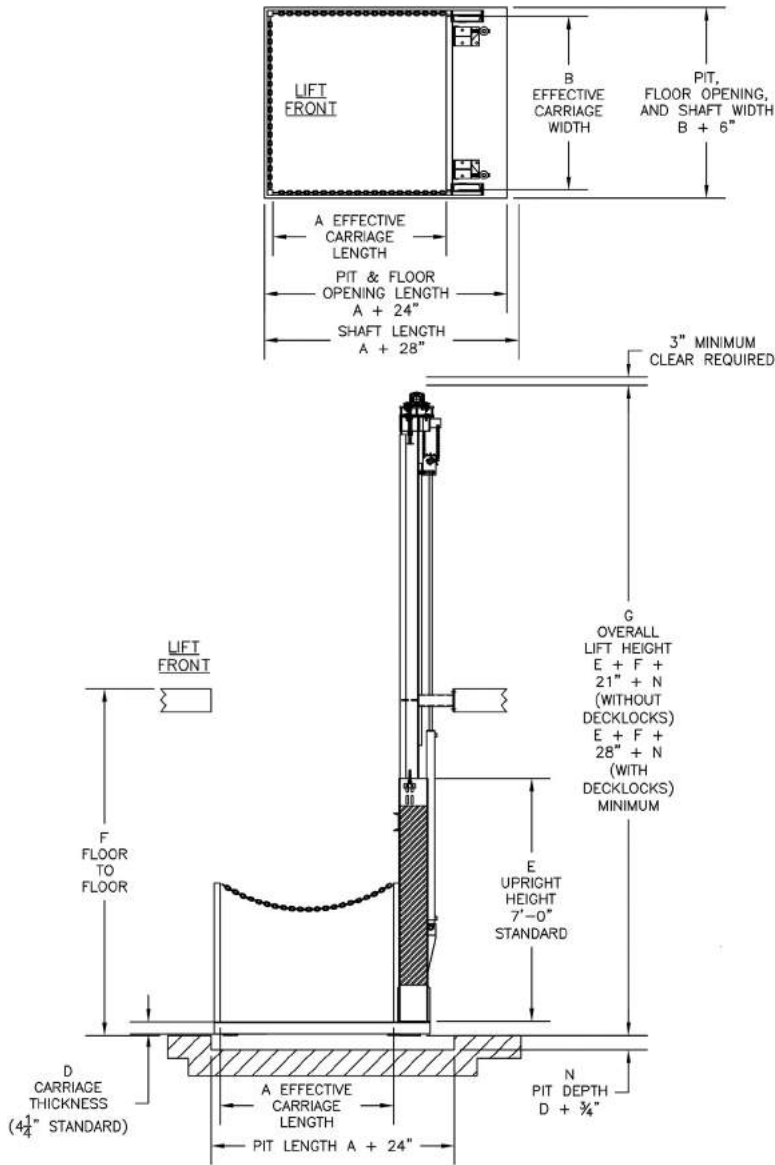
### Benefits

- Moves material safely and quickly between levels
- Pre-wired lift motor pump and controls simplify installation
- Electrical components comply with NEC requirements
- Conforms to ANSI/ASME B20.1

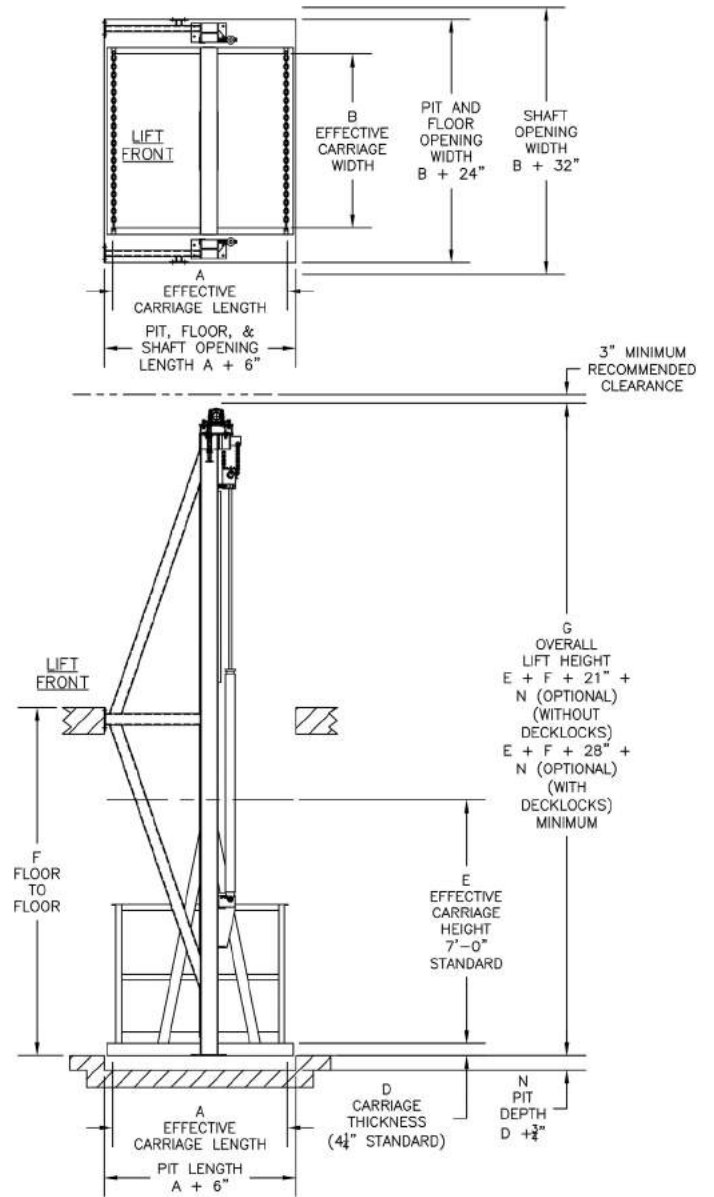
### Limitations

PFlow Series 21 is designed for the movement of materials only and should not be used as an elevator. The rated capacity must not be exceeded.

Pflow Series 21, Cantilever



Pflow Series 21, Straddle



**Table 1 – Physical Properties**

Platform size	Unrestricted
Maximum capacity	6000 lbs
Carriage size	10' x 10' maximum
Maximum vertical rise	22'
Levels	2
Travel speed	24 fpm (special order to 35 fpm)
Power requirement	208V/230V/460V, 3 phase (single phase is optional)
Control voltage	24V
Maximum cycles	10 per hour

**Accessories, Options**

- DeckLock Safety System
- Carriage gate
- Enclosures
- Expanded metal side guards
- Explosion proof
- Quick connect cabling
- Single phase motor
- Custom paint and colors

**Applicable Standards****American National Standards Institute (ANSI)**

ANSI B20.1 Safety Code for Conveyors, Cableways, and Related Equipment

**National Electrical Manufacturer's Association (NEMA)**

NEMA 12 Enclosures

**National Electrical Code® (NEC)**

NFPA 70 National Electrical Code

**Physical Properties**

See Table 1.

**5. Installation****Preparatory Work**

Perform all necessary site work, such as pit, floor opening, adequate bracing locations and shaftway openings. Ensure the site or building area has sufficient clearance to move the equipment into the storage and installation areas.

Transport products in manufacturer's original, unopened, undamaged containers with identification labels intact. A fork truck with a minimum 2000 lb capacity is required. Inspect upon delivery.

**Weather/Ambient Conditions**

PFlow Series 21 accommodates most weather conditions, and materials can be customized for climate need. Epoxy coating and galvanizing is available.

**Methods**

Install in compliance with the manufacturer's Series 21 Installation Manual.

**Building Codes**

Ensure the installation complies with the requirements of all applicable local, state and federal code jurisdictions.

**6. Availability and Cost**

PFlow Industries offers VRCs throughout the U.S. and internationally. Contact PFlow Industries for pricing information and availability in specific areas.

**7. Warranty**

Used and installed as directed, PFlow Industries warrants the Series 21 Hydraulic Vertical Lift beginning 30 days after shipment. PFlow components have a one-year warranty on parts and labor. Purchased components have a one-year parts warranty and a 90-day labor warranty.

**8. Maintenance**

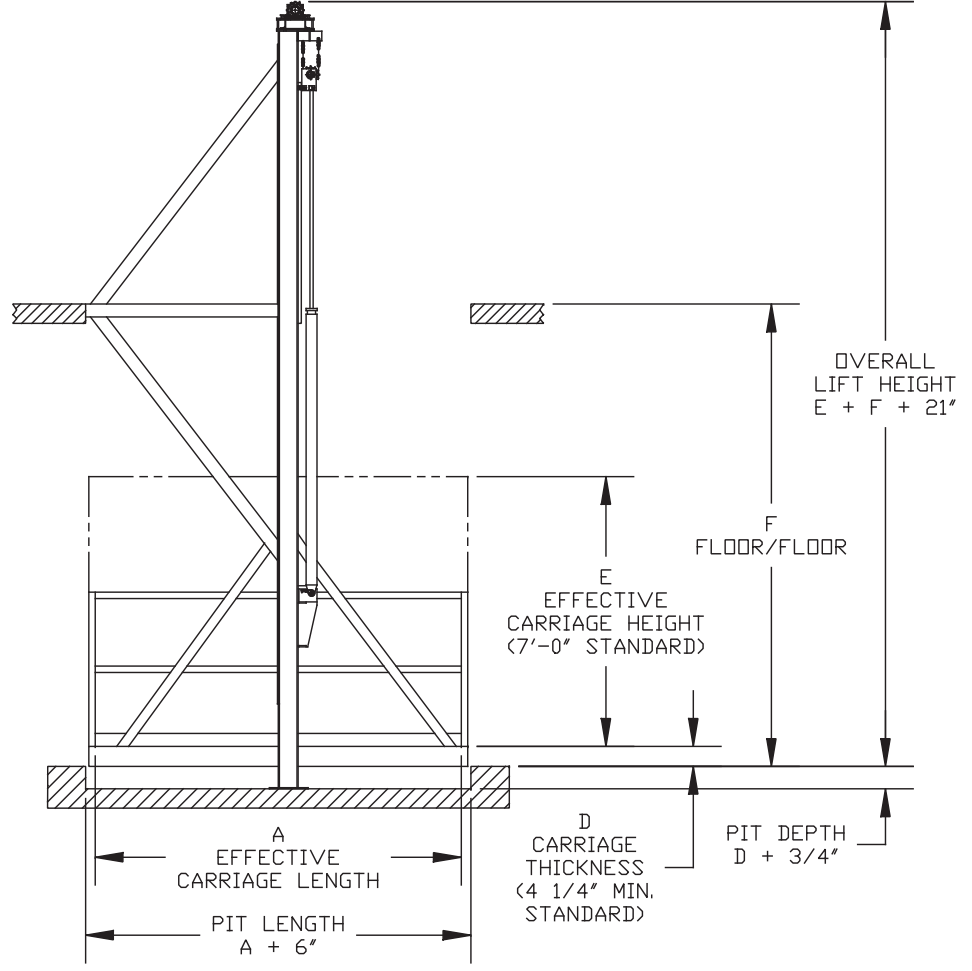
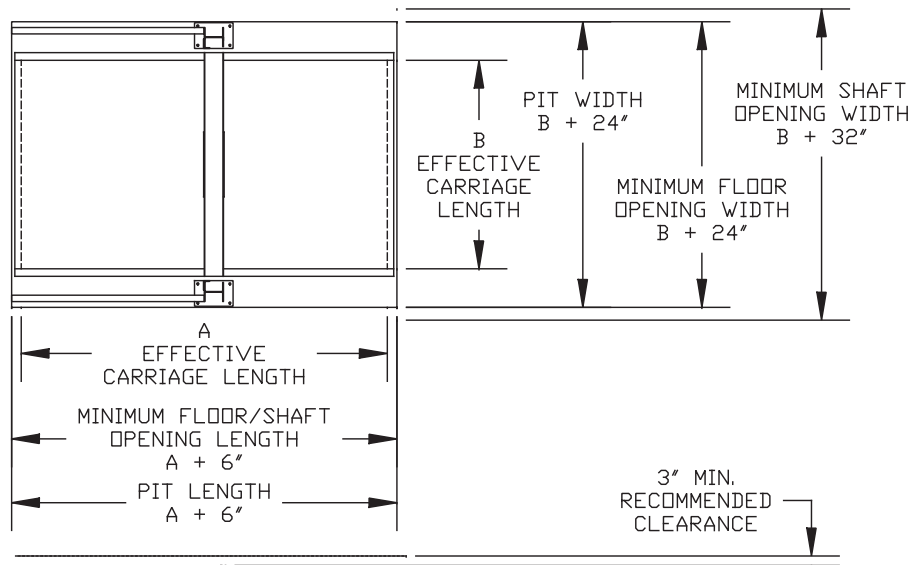
To ensure system safety, the PFlow Series 21 Hydraulic Vertical Lift requires consistent minimal and basic attention. Standard preventative maintenance is within the capabilities of a plant maintenance person. See the PFlow Series 21 owner's manual for maintenance schedule details.

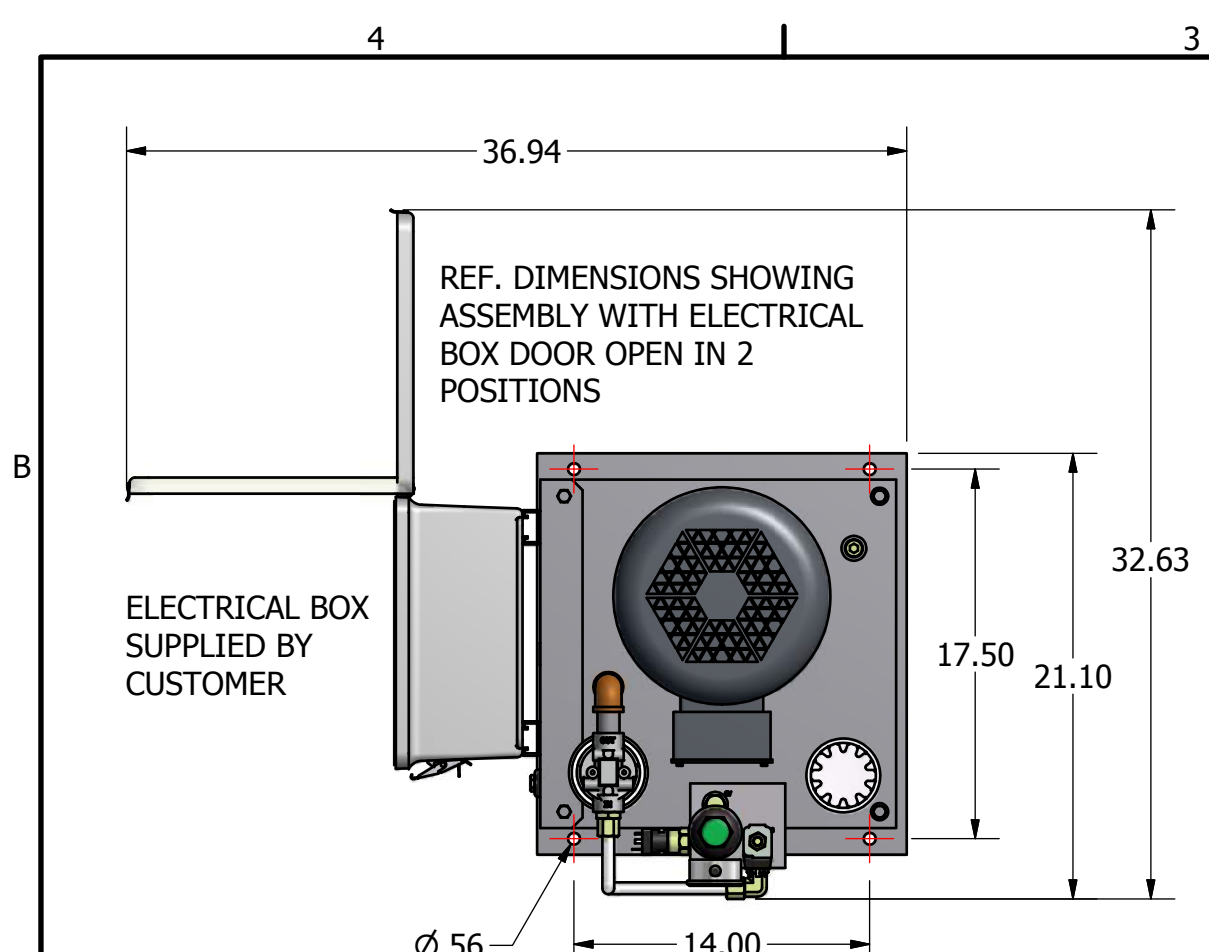
**9. Technical Services**

Technical assistance, including detailed information, product literature, test results, project lists, assistance in preparing project specification or installation supervision is offered by the manufacturer. For questions about specifications, code regulations, product usage or product installation, contact PFlow Industries, Inc.

**10. Filing Systems**

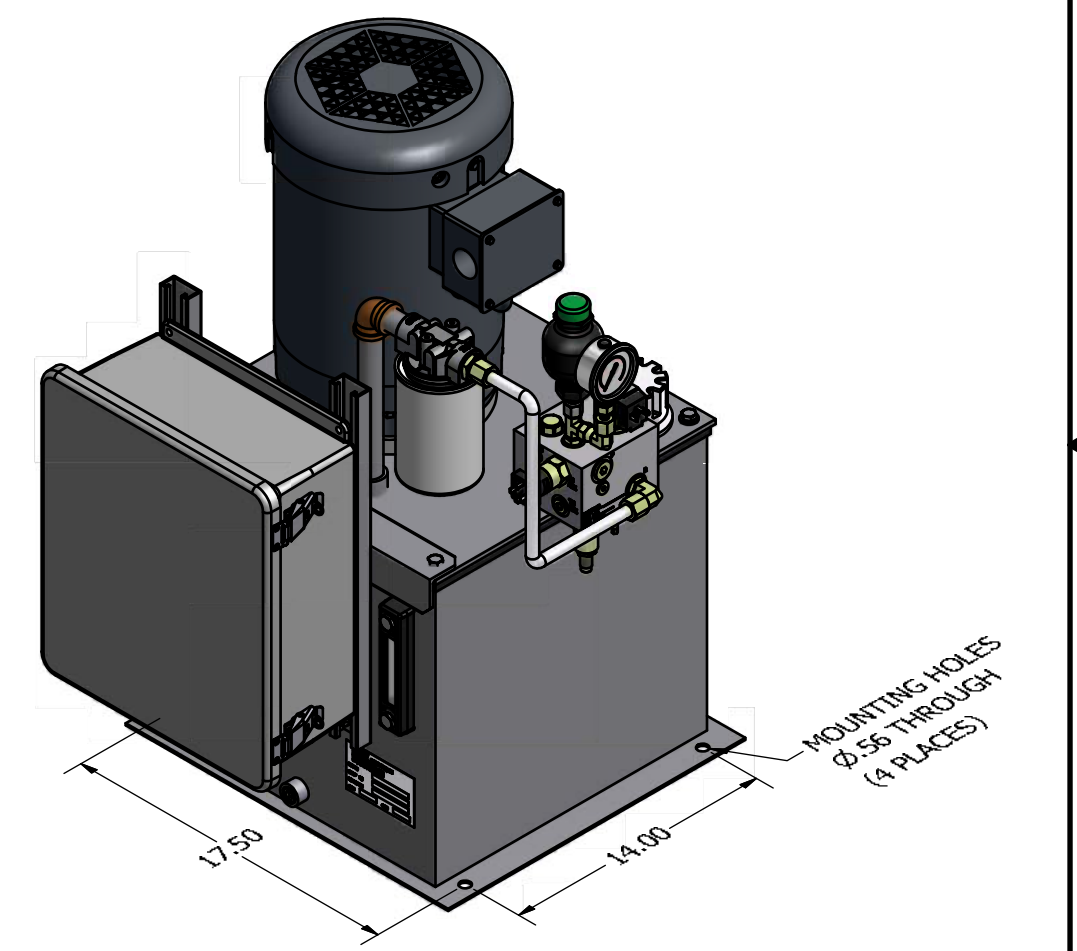
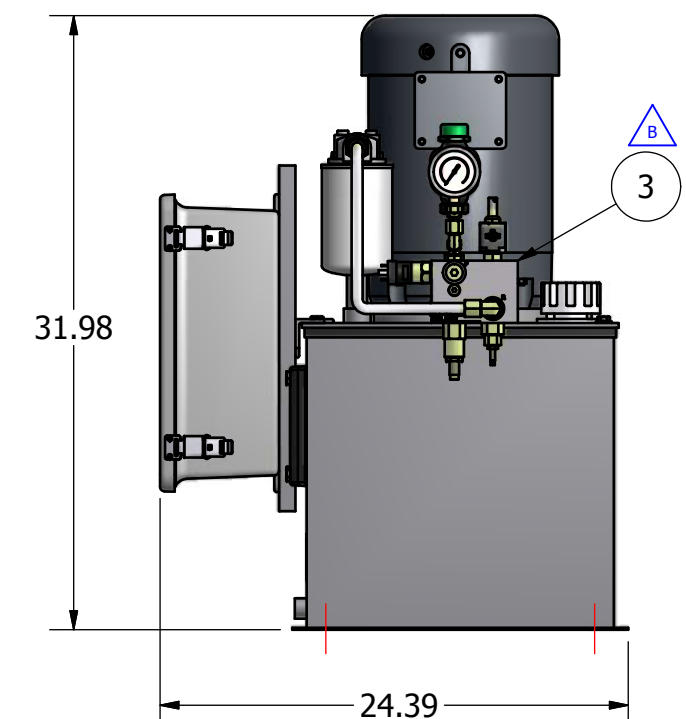
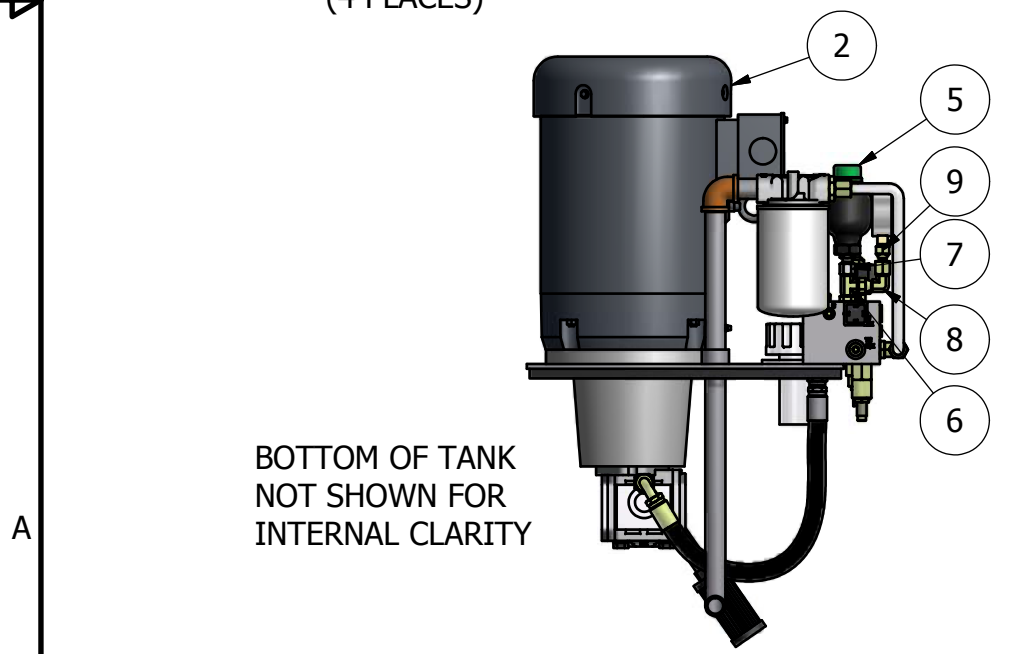
- CMD
- Additional product information is available from the manufacturer upon request ↪





Parts List				
ITEM	VENDOR	PART NUMBER	DESCRIPTION	QTY
1	GS GLOBAL RESOURCES	GS09280-910REVA	HYDRAULIC POWER UNIT 11 GALLON RESERVOIR PLAIN JANE	1
2	GS GLOBAL RESOURCES	GS09280-504REVA	GS 10HP 213 TC 5 GPM SAEA MOTOR PUMP ASSEMBLY	1
3	GS GLOBAL RESOURCES	GS02018REVG	MANIFOLD WITH LOCKOUT OPTION ASSEMBLY	1
4	GS GLOBAL RESOURCES	GS09280960FITTINGS	SAE A PUMP HPU FITTINGS LIST	1
5	STAUFF	STDA007ECOP4UMN1052	.075 LITER 3600 PSI DIAPH ACCUM	1
6	PARKER	6 R50X-S BIN STOCK	FITTING, #6 37DEG FLARE TO #6 SAE	1
7	PARKER	6 F650X-S BIN STOCK	SWIVEL STRAIGHT THREAD CONNECTOR	1
8	PARKER	6 C6X-S BIN STOCK	ELBOW FITTING	1
9	PARKER	6 G6X-S BIN STOCK	CONNECTOR, FEMALE #6 JIC-FEMALE 1/4-18 NPTF FEMALE,SWIVEL	1

NOTE:  
PSI SWITCH = 2,600 PSI  
PRESSURE RELEIF - 3,000 PSI



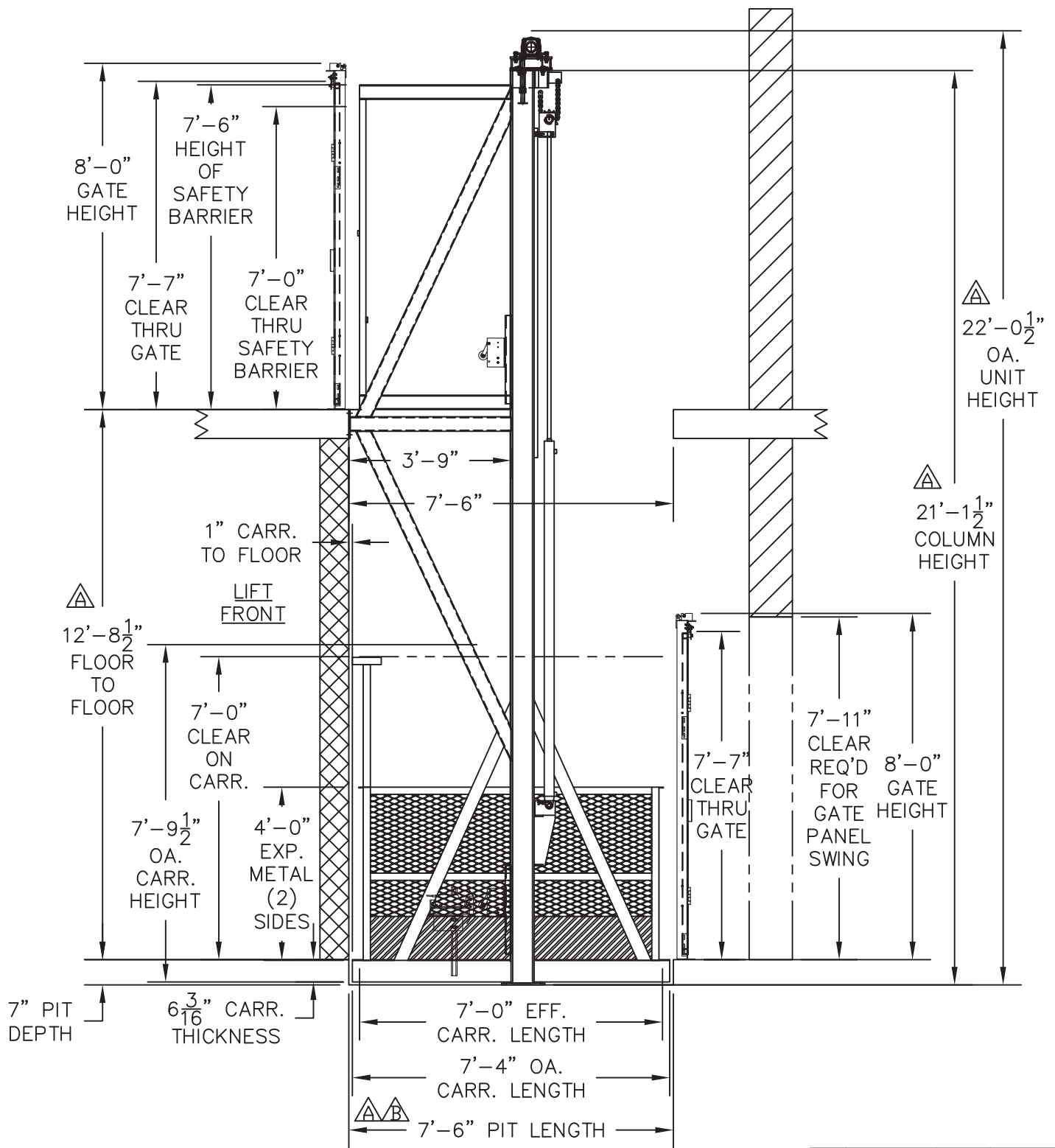
DESCRIPTION	DATE	BY	CHECKED BY	ECO NO.	REV
SOLENOID CHANGED ON MANIFOLD ASSEMBLY	10-17-2014	ATHOMSEN	JHIMMELSBACH	3384	B
ADDED BOM TO DRAWING PER CUSTOMER REQUEST	1-18-2012	ATHOMSEN	MKAJA	-	A
ELECTRICAL BOX ADDED TO SHOW DIMENSIONS	9-29-2011	ATHOMSEN	JHIMMELSBACH	2762	A
3D MODEL & 2D DRAWING CREATED	10-5-2009	AQT	MIKE KAJA	2405	A

P-FLOW P/N 16217-1253

THIRD ANGLE PROJECTION 	DRAWING ORIGINATED BY	ATHOMSEN	10/5/2009	<b>GS GLOBAL RESOURCES</b> NEW BERLIN, WI 53151
	PROJECT ENGINEER	ATHOMSEN	10/17/2014	
UNLESS OTHERWISE SPECIFIED DIMENSIONS ARE IN INCHES ANGULAR DIMENSIONS ± 1° FRACTIONS ± 1/64 SURFACE ROUGHNESS 125 TOLERANCES ON DECIMALS: 1 PLACE 2 PLACE 3 PLACE mm ±.8 ±.25 ±.1 INCH ±.1 ±.01 ±.005 REMOVE BURRS BREAK EDGES 0.25mm 0.01in MAX.	ACCOUNT MANAGER	JHIMMELSBACH	10/17/2014	<b>10 HP HYDRAULIC POWER UNIT WITH ACCUMULATOR</b>
	PRODUCTION COORDINATOR	KFELS	10/20/2014	
FORM NO.	ENG.DW.002.REVC	5/12/2008	SIZE	B
ALL TECHNICAL DATA ON THIS DRAWING IS THE PROPERTY OF GS GLOBAL RESOURCES AND SHALL NOT BE USED BY OTHERS FOR MANUFACTURE, PROCUREMENT, OR DISCLOSURE WITHOUT THE WRITTEN PERMISSION OF GS GLOBAL RESOURCES © 2014			REF	16217-1253
			SCALE	1:10
			SHEET	1 OF 1

PRODUCTION 10-20-2014





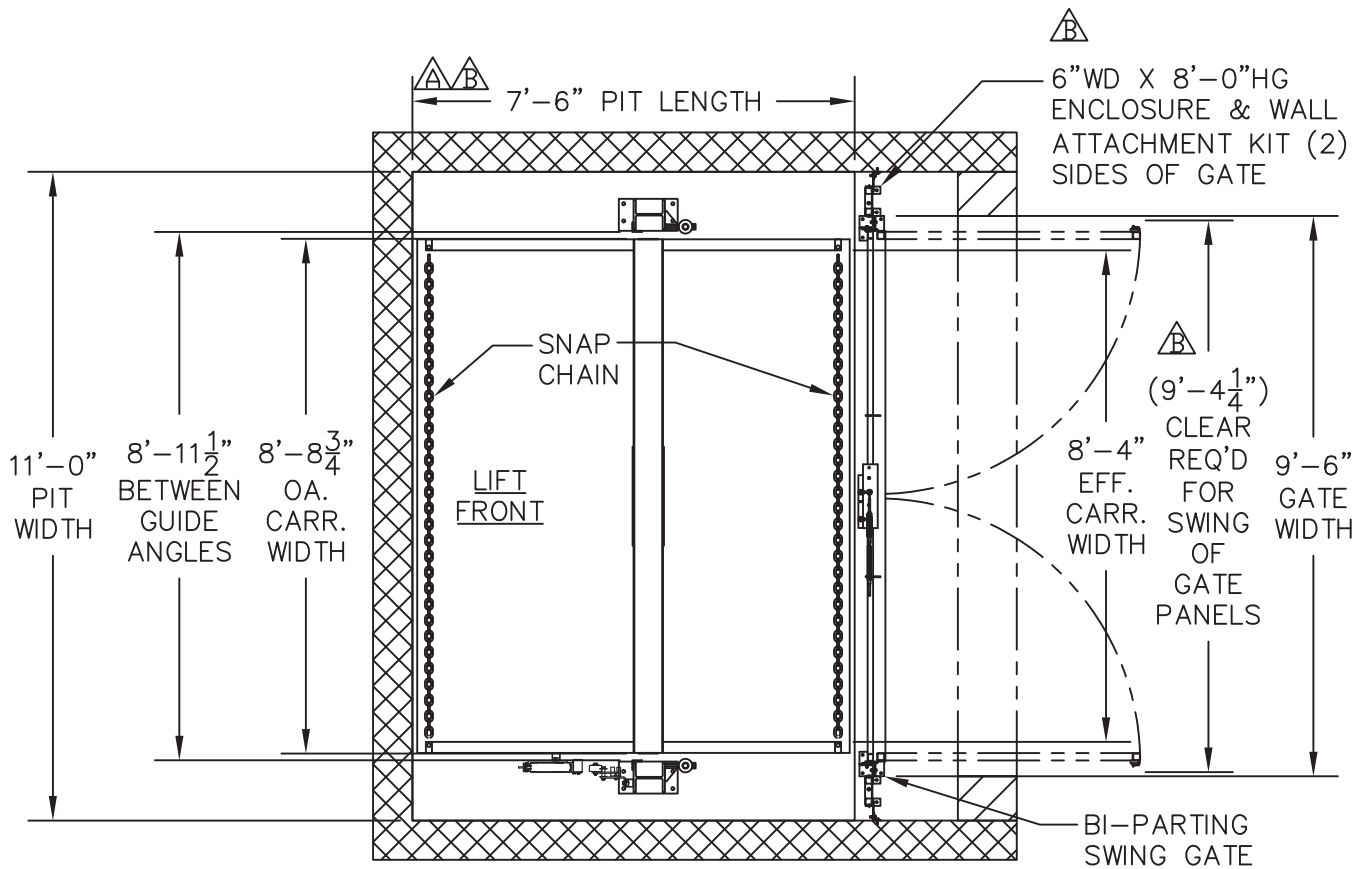
LIFT LEFT SIDE VIEW

△ CHANGED LOAD/UNLOAD SIDE (2) FLOORS TYP.

- APPROVED
  - APPROVED AS NOTED
  - REVISE & RESUBMIT
- BY: \_\_\_\_\_
- DATE: \_\_\_\_\_

B	2/7/13	AEB	-
A	1/31/13	AEB	-
REV	DATE	BY	ECN
REVISIONS			

		<b>PFLOW INDUSTRIES, INC.</b> 6720 North Teutonia Ave. Milwaukee, WI 53209		(414) 352-9000 (414) 352-9002 FAX info@pflow.com	
		<b>CHARLESVIEW MA BOSTON, MA.</b>			
DATE		SCALE		DRAWING NUMBER	
9/20/12		N.T.S.		J15070-GA	
DRAWN		CHECKED		SHT	
AEB		JB		1 OF 3	
				REV	
				B	




**B** PLAN VIEW - GARAGE - LOWER LEVEL

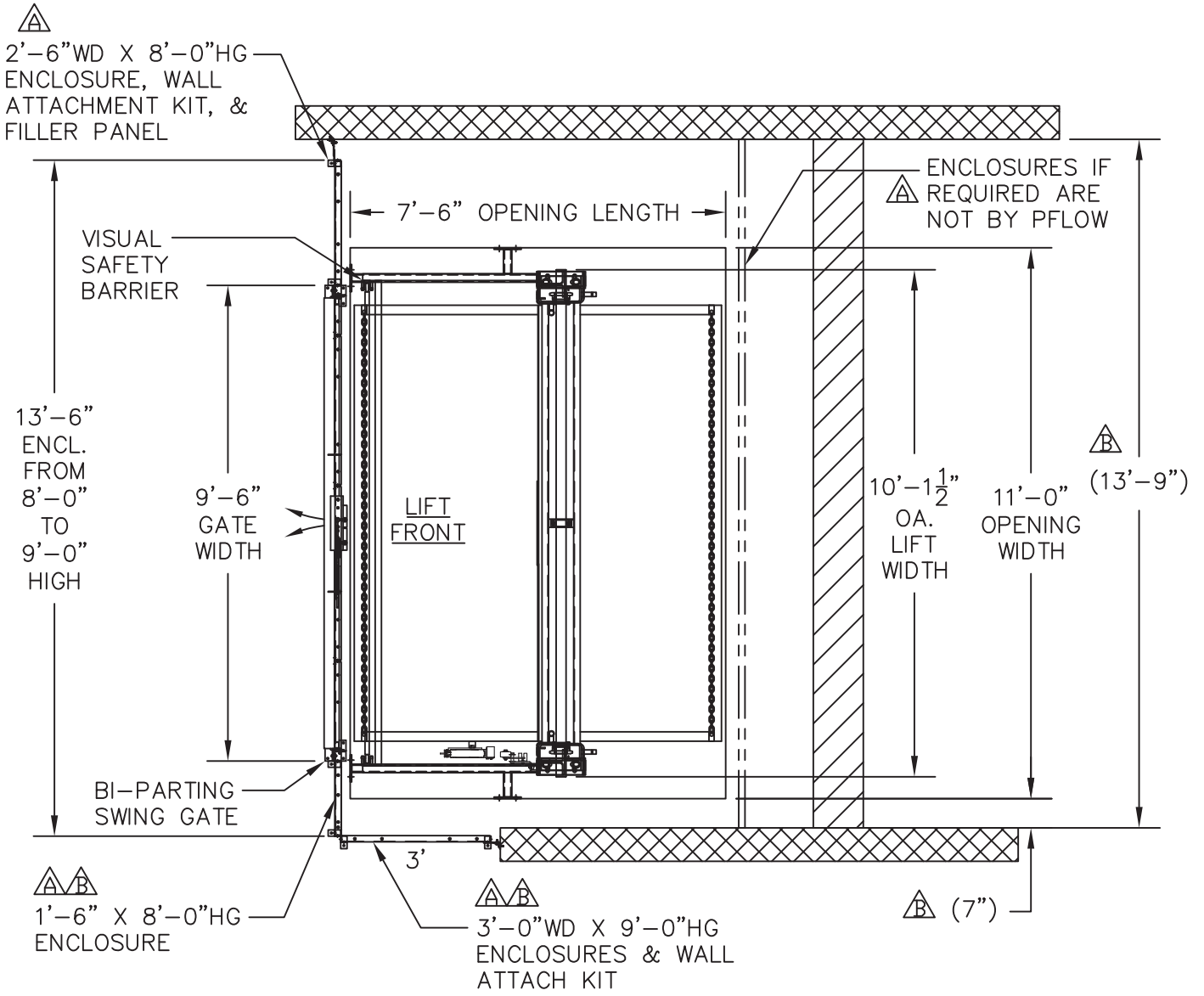
22" WIDE X 24" LONG X 32" HIGH  
MOTOR/PUMP TO BE LOCATED  
WITHIN 10'-0" OF LIFT

B	2/7/13	AEB	-
A	1/31/13	AEB	-
REV	DATE	BY	ECN
REVISIONS			

- APPROVED
  - APPROVED AS NOTED
  - REVISE & RESUBMIT
- BY: \_\_\_\_\_  
DATE: \_\_\_\_\_

		<b>PFLOW INDUSTRIES, INC.</b> 6720 North Teutonia Ave. Milwaukee, WI 53209		(414) 352-9000 (414) 352-9002 FAX info@pflow.com	
		<b>TITLE</b> CHARLESVIEW MA BOSTON, MA.			
DATE	9/20/12	SCALE	N.T.S.	DRAWING NUMBER	J15070-GA
DRAWN	AEB	CHECKED	JB	SHT OF	2 3
					<b>REV</b> <b>B</b>

EACH COLUMN REQUIRES BRACING IN BOTH FRONT TO BACK & SIDE TO SIDE DIRECTIONS (BY INSTALLER). BRACING SHOWN IS FOR REFERENCE ONLY – CONSULT INSTALLATION INSTRUCTIONS. BRACING MUST RESIST ALL DYNAMIC OPERATIONAL LOADS. FOR REFERENCE, THE VERTICAL CONVEYOR AS SHOWN IMPOSES APPROXIMATELY 730# OF STATIC LATERAL LOAD AT 2ND FLOOR ELEVATION.



PLAN VIEW – 1ST FLOOR – UPPER LEVEL

CHANGED LOAD/UNLOAD SIDE (2) FLOORS TYP.

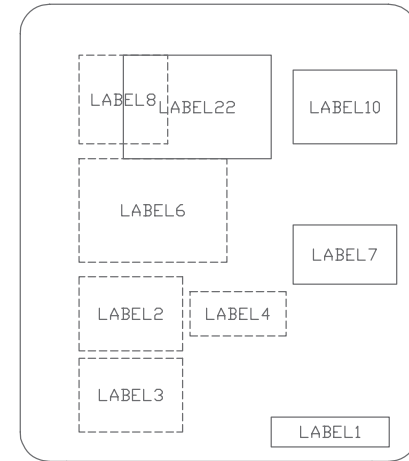
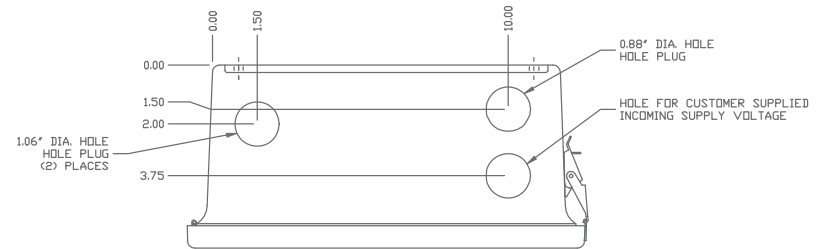
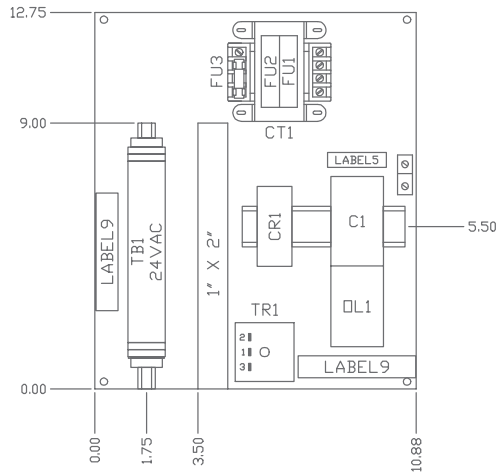
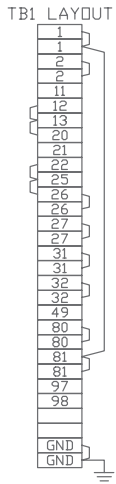
- APPROVED
- APPROVED AS NOTED
- REVISE & RESUBMIT

BY: \_\_\_\_\_  
DATE: \_\_\_\_\_

B	2/7/13	AEB	–
A	1/31/13	AEB	–
REV	DATE	BY	ECN
REVISIONS			

		PFLOW INDUSTRIES, INC. 6720 North Teutonia Ave. Milwaukee, WI 53209		(414) 352-9000 (414) 352-9002 FAX info@pflow.com	
		TITLE CHARLESVIEW MA BOSTON, MA.			
DATE	9/20/12	SCALE	N.T.S.	DRAWING NUMBER	J15070-GA
DRAWN	AEB	CHECKED	JB	SHT OF	3 / 3
					REV B

PROPRIETARY DOCUMENT - CONFIDENTIAL  
 THIS PRINT, INCLUDING THE DESIGN AND PRINCIPLES OF CONSTRUCTION, IS THE PROPERTY OF PFLOW INDUSTRIES, INC. AND MUST BE RETURNED ON DEMAND.  
 THE INFORMATION CONTAINED HEREON IS CONFIDENTIAL AND MAY NOT BE USED NOR DIVULGED WITHOUT THE WRITTEN PERMISSION OF PFLOW INDUSTRIES, INC.



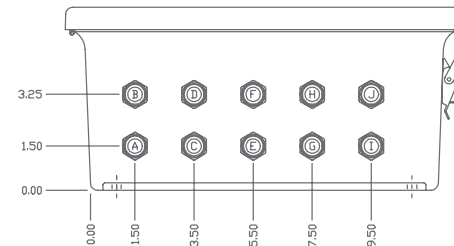
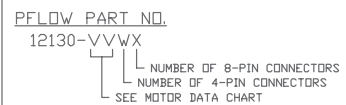
**INCOMING FUSING:**

REQUIRED SUPPLY <= 30 AMPS  
 CLASS CC FUSES - 200,000 AMPS MINIMUM INTERRUPTING RATING  
 REQUIRED SUPPLY => 30 AMPS  
 CLASS J FUSES - 200,000 AMPS MINIMUM INTERRUPTING RATING

MOTOR NO.	HYDRAULIC PUMP MOTOR DATA (ALL BELDVO 3 PH/60 HZ)					FUSED CUSTOMER SUPPLY (MAX. AMPS)	SHORT CIRCUIT RATING (KA)	VOLTAGE LABEL	
	PRIMARY VOLTAGE	MOTOR HP	MOTOR FLA	MIN. PDVER OKT. WIRE AWG	MOTOR F.L.A.			PFLW PART NO.	MFG. PART NO.
1X	1	208	3	9.5	12	15	100	9374-0001	BRADY CV44306
	2	208	5	13.9	12	20	100	9374-0001	BRADY CV44306
	3	230	3	8.6	12	12	100	9374-0002	BRADY CV44308
	4	230	5	12.6	12	20	100	9374-0002	BRADY CV44308
	5	460	3	4.3	12	6	100	9374-0003	BRADY CV44314
	6	460	5	6.3	12	8	100	9374-0003	BRADY CV44314
	7	460	7.5	9.3	12	12	100	9374-0003	BRADY CV44314
	8	460	10	13.0	12	20	100	9374-0003	BRADY CV44314
2X	1	208	7.5	20.6	10	30	100	9374-0001	BRADY CV44306
	2	230	7.5	18.6	10	25	100	9374-0002	BRADY CV44308
3X	1	208	10	28.8	8	40	100	9374-0001	BRADY CV44306
	2	230	10	26.0	8	35	100	9374-0002	BRADY CV44308

ALL QUICK-CONNECT CABLES ARE TO BE LABELED AS FOLLOWS:

3-WIRE CABLES: \*GATE INTERLOCK\*  
 8-WIRE CABLES: \*PUSH BUTTON STATION\*



**WIRING NOTES:**

- 1) ALL CABLE LABELS ARE TO BE MECHANICALLY PRINTED WITH BLACK CHARACTERS ON SELF LAMINATING WHITE LABELS.
- 2) ALL WIRE LABELS ARE TO BE MECHANICALLY PRINTED WITH BLACK CHARACTERS ON NON-SELF LAMINATING WHITE LABELS.
- 3) EACH CABLE IS TO BE LABELED ON BOTH ENDS.
- 4) EACH WIRE IS TO BE LABELED ON BOTH ENDS.
- 5) CONNECTORS WITH THE LEAST AMOUNT OF PINS ARE TO BE MOUNTED FIRST, STARTING IN POSITION 'A', FOLLOWED BY THE REST IN SEQUENCE.
- 6) EACH JUMPER SHALL CONNECT ONLY TWO TERMINALS.
- 7) REMOVE JUMPERS AS REQUIRED WHEN CONNECTING CABLES TO TERMINAL STRIP.

REV	DESCRIPTION	APPR. BY	DATE

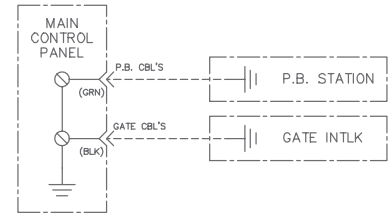
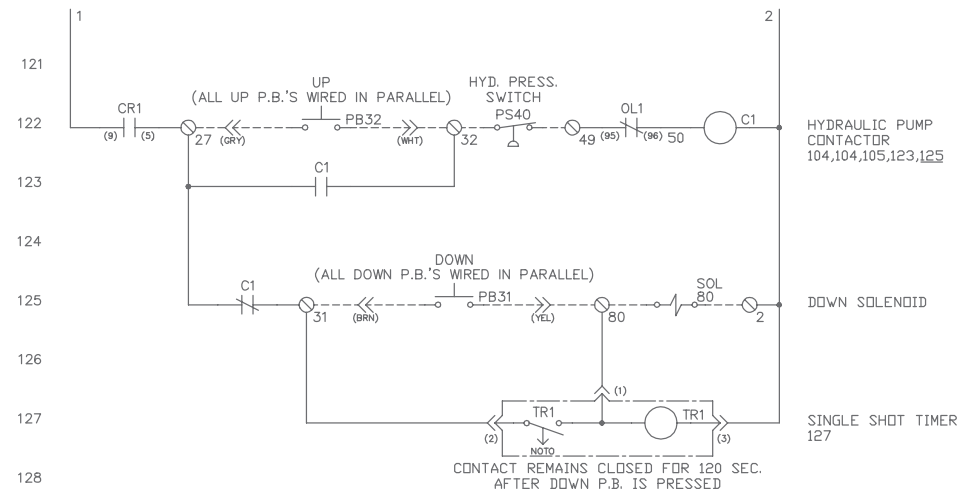
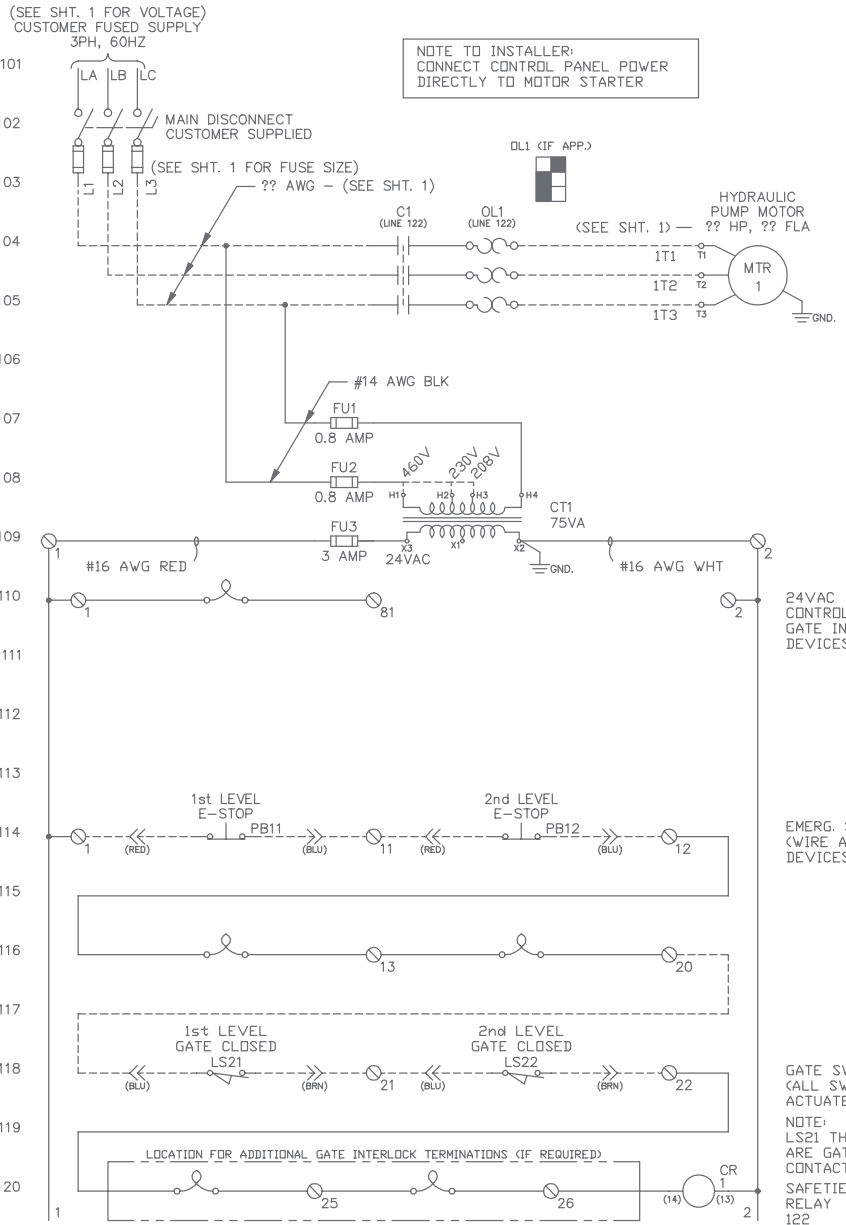
NAME	DATE	NAME	DATE
DRAWN BY: JWK	08-24-06	CHECKED BY: JWK	08-24-06
DESIGNED BY: JWK	08-24-06	APPROVED BY:	

CTRL PANEL W/QUICK CONN. CABLES  
 HYD., 2-LVL, 3 PH, 24VAC CTRL

**PFLOW** INDUSTRIES, INC.  
 Milwaukee, Wisconsin

DRAWING #: 12130  
 SHEET 1 OF 3

PROPRIETARY DOCUMENT - CONFIDENTIAL  
 THIS PRINT, INCLUDING THE DESIGN AND PRINCIPLES OF CONSTRUCTION, IS THE PROPERTY OF FLOW INDUSTRIES, INC. AND MUST BE RETURNED ON DEMAND.  
 THE INFORMATION CONTAINED HEREON IS CONFIDENTIAL AND MAY NOT BE USED NOR DISCLOSED WITHOUT THE WRITTEN PERMISSION OF FLOW INDUSTRIES, INC.



REV	DESCRIPTION	APPR. BY	DATE	NAME	DATE	NAME	DATE
				DRAWN BY: JWK	08-24-06	CHECKED BY: JWK	08-24-06
				DESIGNED BY: JWK	08-24-06	APPROVED BY:	

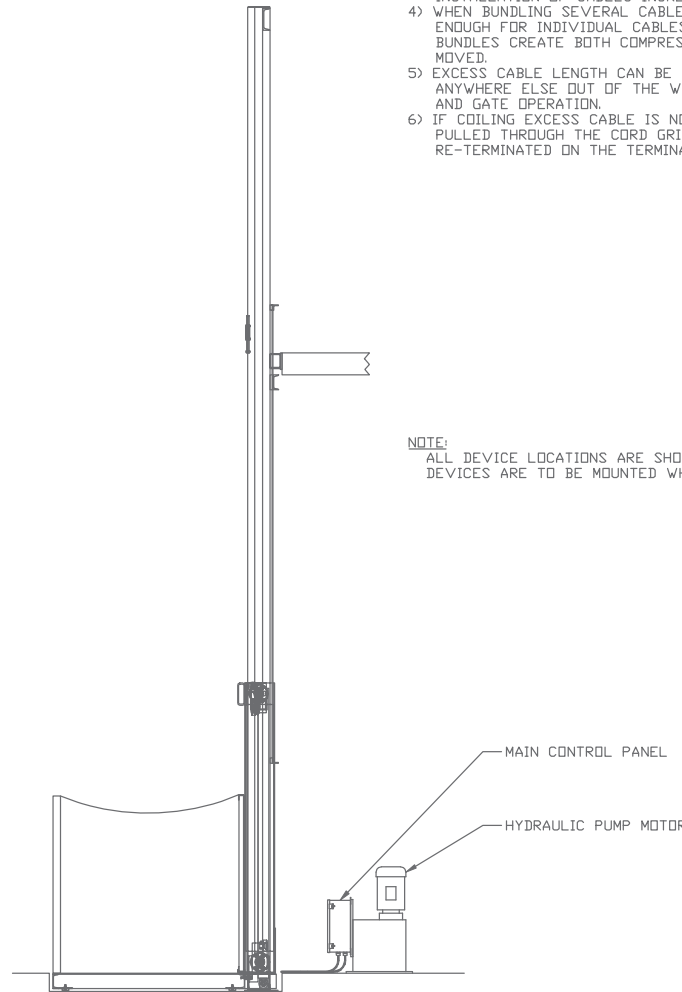
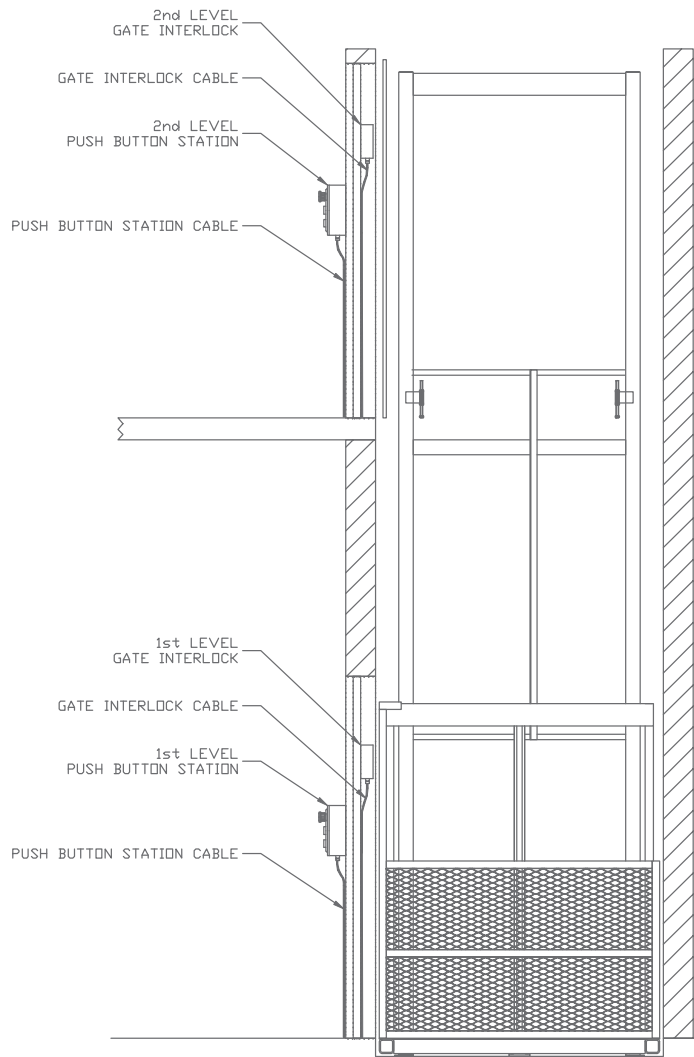
CTRL PANEL W/QUICK CONN. CABLES  
HYD., 2-LVL, 3 PH, 24VAC CTRL



DRAWING #:	12130
SHEET	2 OF 3

08-24-2006

PROPRIETARY DOCUMENT — CONFIDENTIAL  
 THIS PRINT, INCLUDING THE DESIGN AND PRINCIPLES OF CONSTRUCTION, IS THE PROPERTY OF FLOW INDUSTRIES, INC. AND MUST BE RETURNED ON DEMAND.  
 THE INFORMATION CONTAINED HEREON IS CONFIDENTIAL AND MAY NOT BE USED OR DIVULGED WITHOUT THE WRITTEN PERMISSION OF FLOW INDUSTRIES, INC.



**CABLE INSTALLATION NOTES:**

- 1) DO NOT USE TOOLS TO TIGHTEN COUPLING NUT. HAND-TIGHTEN ONLY.
- 2) PROPER BEND RADIUS WILL INCREASE THE EFFECTIVE CABLE WORKING LIFE.
  - FIXED APPLICATIONS: MINIMUM BEND RADIUS IS 5X CABLE DIAMETER.
  - MOVING APPLICATIONS: MINIMUM BEND RADIUS IS 10X CABLE DIAMETER.
- 3) ALLOWING FOR ADEQUATE STRESS LOOPS AND FREEDOM OF MOTION DURING INSTALLATION OF CABLES INCREASES THE LIFE OF THE CABLES.
- 4) WHEN BUNDLING SEVERAL CABLES TOGETHER, ALWAYS KEEP THE BUNDLE LOOSE ENOUGH FOR INDIVIDUAL CABLES TO MOVE WITHIN THE BUNDLE. TIGHTLY TIED BUNDLES CREATE BOTH COMPRESSION AND TENSION STRESSES WHEN THE BUNDLE IS MOVED.
- 5) EXCESS CABLE LENGTH CAN BE COILED AND TIED AT THE CONTROL PANEL OR ANYWHERE ELSE OUT OF THE WAY, PROVIDED THE COIL IS FREE FROM CARRIAGE AND GATE OPERATION.
- 6) IF COILING EXCESS CABLE IS NOT POSSIBLE, EXCESS CABLE LENGTH CAN BE PULLED THROUGH THE CORD GRIP INTO THE MAIN CONTROL PANEL, CUT, AND RE-TERMINATED ON THE TERMINAL STRIP.

**NOTE:**

ALL DEVICE LOCATIONS ARE SHOWN FOR REFERENCE ONLY. DEVICES ARE TO BE MOUNTED WHERE REQUIRED DURING INSTALLATION.

**FIELD WIRING NOTES:**

- 1) ALL IN-FIELD ELECTRICAL WIRING AND CRAFTSMANSHIP SHALL BE IN ACCORDANCE WITH EXISTING STATE, LOCAL AND NATIONAL ELECTRICAL CODE STANDARDS.
- 2) CONTROL CIRCUIT WIRING SHALL BE #14 AWG, 19 STRAND, TYPE THHN OR EQUAL, 600V.
- 3) POWER CIRCUIT WIRING SHALL BE STRANDED, TYPE THHN OR EQUAL, 600V (SEE CHART FOR AWG).
- 4) A SAFETY DISCONNECT SWITCH SHALL BE LOCATED AND INSTALLED BY CUSTOMER WITHIN 10 FEET OF HY-LIFT.
- 5) TERMINAL ALL FIELD WIRED DEVICES INDIVIDUALLY AT CONTROL PANEL.
- 6) DASHED LINES INDICATE FIELD WIRING.
- 7) IF MOTOR RUNS BACKWARDS, REVERSE MOTOR LEADS T1 AND T2 ONLY.

REV	DESCRIPTION	APPR. BY	DATE	NAME	DATE	NAME	DATE
				DRAWN BY: JWK	08-24-06	CHECKED BY: JWK	08-24-06
				DESIGNED BY: JWK	08-24-06	APPROVED BY:	

CTRL PANEL W/QUICK CONN. CABLES  
 HYD., 2-LVL, 3 PH, 24VAC CTRL

**Flow** INDUSTRIES, INC.  
 Milwaukee, Wisconsin

DRAWING #: 12130  
 SHEET 3 OF 3

08-24-2006